

**(DANRE) opn1sw2 Antibody (C-Term)**  
**Purified Rabbit Polyclonal Antibody (Pab)**  
**Catalog # Azb21565b**

## Specification

---

### (DANRE) opn1sw2 Antibody (C-Term) - Product Information

Application	WB,E
Primary Accession	<a href="#">O9W6A8</a>
Reactivity	Zebrafish
Host	Rabbit
Clonality	polyclonal
Isotype	Rabbit IgG
Antigen Region	242-276

### (DANRE) opn1sw2 Antibody (C-Term) - Additional Information

**Gene ID** 30435

#### Other Names

Opsin-1, short-wave-sensitive 2, Blue cone photoreceptor pigment, Blue-sensitive opsin, Opsin SWS-2, opn1sw2, bluops, opn1sw1, sws2

#### Target/Specificity

This DANRE opn1sw2 antibody is generated from a rabbit immunized with a KLH conjugated synthetic peptide between 242-276 amino acids of DANRE opn1sw2.

#### Dilution

WB~~1:2000

#### Format

Purified polyclonal antibody supplied in PBS with 0.09% (W/V) sodium azide. This antibody is purified through a protein A column, followed by peptide affinity purification.

#### Storage

Maintain refrigerated at 2-8°C for up to 2 weeks. For long term storage store at -20°C in small aliquots to prevent freeze-thaw cycles.

#### Precautions

(DANRE) opn1sw2 Antibody (C-Term) is for research use only and not for use in diagnostic or therapeutic procedures.

### (DANRE) opn1sw2 Antibody (C-Term) - Protein Information

**Name** opn1sw2

**Synonyms** bluops, opn1sw1, sws2

**Function** Visual pigments are the light-absorbing molecules that mediate vision. They consist of

an apoprotein, opsin, covalently linked to cis-retinal.

#### Cellular Location

Membrane; Multi-pass membrane protein.

#### Tissue Location

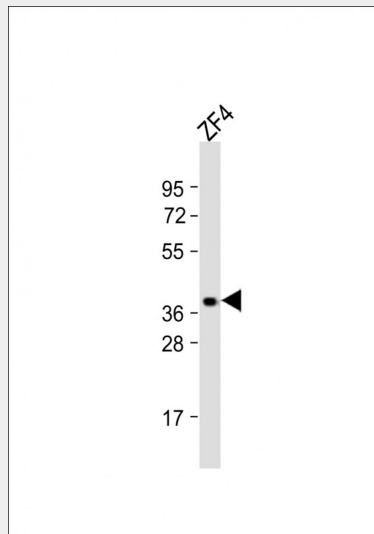
Retinal long single cone outer segments.

### (DANRE) opn1sw2 Antibody (C-Term) - Protocols

Provided below are standard protocols that you may find useful for product applications.

- [Western Blot](#)
- [Blocking Peptides](#)
- [Dot Blot](#)
- [Immunohistochemistry](#)
- [Immunofluorescence](#)
- [Immunoprecipitation](#)
- [Flow Cytometry](#)
- [Cell Culture](#)

### (DANRE) opn1sw2 Antibody (C-Term) - Images



Anti-opn1sw2 Antibody (C-Term) at 1:2000 dilution + ZF4 whole cell lysates. Lysates/proteins at 20 µg per lane. Secondary Goat Anti-Rabbit IgG, (H+L), Peroxidase conjugated at 1/10000 dilution. Predicted band size : 39 kDa. Blocking/Dilution buffer: 5% NFDN/TBST.

### (DANRE) opn1sw2 Antibody (C-Term) - Background

Visual pigments are the light-absorbing molecules that mediate vision. They consist of an apoprotein, opsin, covalently linked to cis-retinal.

### (DANRE) opn1sw2 Antibody (C-Term) - References

- Vihtelic T.S., et al. *Vis. Neurosci.* 16:571-585(1999).  
Chinen A., et al. *Genetics* 163:663-675(2003).  
Howe K., et al. *Nature* 496:498-503(2013).

**(DANRE) opn1sw2 Antibody (C-Term) - Citations**

- [Deficiency of copper responsive gene stmn4 induces retinal developmental defects.](#)
- [Silver nanoparticles affect lens rather than retina development in zebrafish embryos.](#)