

**(DANRE) cyfip1 Antibody (Center)**  
**Purified Rabbit Polyclonal Antibody (Pab)**  
**Catalog # Azb19126c**

**Specification**

---

**(DANRE) cyfip1 Antibody (Center) - Product Information**

|                   |                        |
|-------------------|------------------------|
| Application       | WB,E                   |
| Primary Accession | <a href="#">O90YM8</a> |
| Reactivity        | Zebrafish              |
| Host              | Rabbit                 |
| Clonality         | polyclonal             |
| Isotype           | Rabbit IgG             |
| Calculated MW     | 145174                 |
| Antigen Region    | 524-558                |

**(DANRE) cyfip1 Antibody (Center) - Additional Information**

**Gene ID** 336613

**Other Names**

Cytoplasmic FMR1-interacting protein 1 homolog, cyfip1  
{ECO:0000312|ZFIN:ZDB-GENE-030131-8557}

**Target/Specificity**

This DANRE cyfip1 antibody is generated from a rabbit immunized with a KLH conjugated synthetic peptide between 524-558 amino acids from the Central region of DANRE cyfip1.

**Dilution**

WB~~1:2000

**Format**

Purified polyclonal antibody supplied in PBS with 0.09% (W/V) sodium azide. This antibody is purified through a protein A column, followed by peptide affinity purification.

**Storage**

Maintain refrigerated at 2-8°C for up to 2 weeks. For long term storage store at -20°C in small aliquots to prevent freeze-thaw cycles.

**Precautions**

(DANRE) cyfip1 Antibody (Center) is for research use only and not for use in diagnostic or therapeutic procedures.

**(DANRE) cyfip1 Antibody (Center) - Protein Information**

**Name** cyfip1 {ECO:0000312|ZFIN:ZDB-GENE-030131-8557}

**Function** Involved in formation of membrane ruffles and lamellipodia protrusions and in axon outgrowth. Binds to F-actin but not to RNA (By similarity).

### Cellular Location

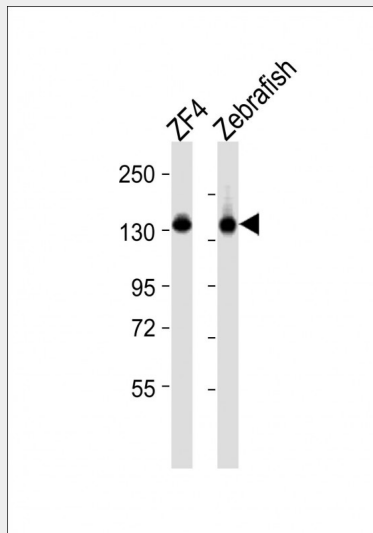
Cytoplasm {ECO:0000250|UniProtKB:Q7TMB8}. Cytoplasm, perinuclear region {ECO:0000250|UniProtKB:Q7TMB8}. Cell projection, lamellipodium {ECO:0000250|UniProtKB:Q7TMB8}. Cell projection, ruffle {ECO:0000250|UniProtKB:Q7TMB8}. Synapse, synaptosome {ECO:0000250|UniProtKB:Q7TMB8}. Note=Highly expressed in the perinuclear region (By similarity). Enriched in synaptosomes (By similarity). Also enriched in membrane ruffles and at the tips of lamellipodia (By similarity). {ECO:0000250|UniProtKB:Q7TMB8}

### (DANRE) cyfip1 Antibody (Center) - Protocols

Provided below are standard protocols that you may find useful for product applications.

- [Western Blot](#)
- [Blocking Peptides](#)
- [Dot Blot](#)
- [Immunohistochemistry](#)
- [Immunofluorescence](#)
- [Immunoprecipitation](#)
- [Flow Cytometry](#)
- [Cell Culture](#)

### (DANRE) cyfip1 Antibody (Center) - Images



All lanes : Anti-cyfip1 Antibody (Center) at 1:2000 dilution Lane 1: ZF4 whole cell lysates Lane 2: Zebrafish lysates Lysates/proteins at 20 µg per lane. Secondary Goat Anti-Rabbit IgG, (H+L), Peroxidase conjugated at 1/10000 dilution Predicted band size : 145 kDa Blocking/Dilution buffer: 5% NFDM/TBST.

### (DANRE) cyfip1 Antibody (Center) - Background

Involved in formation of membrane ruffles and lamellipodia protrusions and in axon outgrowth. Binds to F-actin but not to RNA (By similarity).

### (DANRE) cyfip1 Antibody (Center) - References

Schenck A., et al. Proc. Natl. Acad. Sci. U.S.A. 98:8844-8849(2001).

