

**(DANRE) shq1 Antibody (C-term)**  
**Purified Rabbit Polyclonal Antibody (Pab)**  
**Catalog # Azb19124b**

## Specification

---

### (DANRE) shq1 Antibody (C-term) - Product Information

Application	WB,E
Primary Accession	<a href="#">A111R0</a>
Reactivity	Zebrafish
Host	Rabbit
Clonality	polyclonal
Isotype	Rabbit IgG
Calculated MW	67499
Antigen Region	573-605

### (DANRE) shq1 Antibody (C-term) - Additional Information

#### Other Names

Protein SHQ1 homolog, shq1

#### Target/Specificity

This DANRE shq1 antibody is generated from a rabbit immunized with a KLH conjugated synthetic peptide between 573-605 amino acids from the C-terminal region of DANRE shq1.

#### Dilution

WB~~1:2000

#### Format

Purified polyclonal antibody supplied in PBS with 0.09% (W/V) sodium azide. This antibody is purified through a protein A column, followed by peptide affinity purification.

#### Storage

Maintain refrigerated at 2-8°C for up to 2 weeks. For long term storage store at -20°C in small aliquots to prevent freeze-thaw cycles.

#### Precautions

(DANRE) shq1 Antibody (C-term) is for research use only and not for use in diagnostic or therapeutic procedures.

### (DANRE) shq1 Antibody (C-term) - Protein Information

**Name** shq1

**Function** Required for the quantitative accumulation of H/ACA ribonucleoproteins (RNPs).

#### Cellular Location

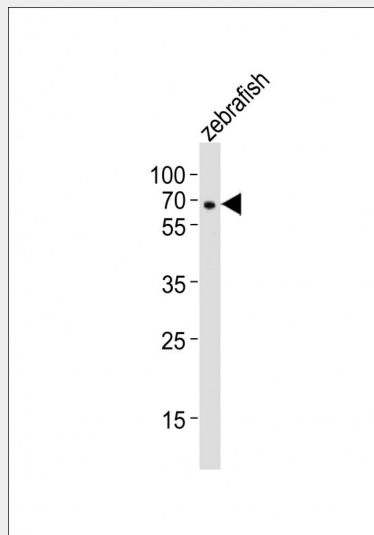
Cytoplasm, cytosol. Nucleus, nucleoplasm

### (DANRE) shq1 Antibody (C-term) - Protocols

Provided below are standard protocols that you may find useful for product applications.

- [Western Blot](#)
- [Blocking Peptides](#)
- [Dot Blot](#)
- [Immunohistochemistry](#)
- [Immunofluorescence](#)
- [Immunoprecipitation](#)
- [Flow Cytometry](#)
- [Cell Culture](#)

### (DANRE) shq1 Antibody (C-term) - Images



Anti-shq1 Antibody (C-term) at 1:2000 dilution + zebrafish lysates Lysates/proteins at 20  $\mu$ g per lane. Secondary Goat Anti-Rabbit IgG, (H+L), Peroxidase conjugated at 1/10000 dilution Predicted band size : 67 kDa Blocking/Dilution buffer: 5% NFDM/TBST.

### (DANRE) shq1 Antibody (C-term) - Background

Required for the quantitative accumulation of H/ACA ribonucleoproteins (RNPs).

### (DANRE) shq1 Antibody (C-term) - References

Lemeer S., et al. J. Proteome Res. 7:1555-1564(2008).