

(DANRE) ankrd13c Antibody (C-term)
Purified Rabbit Polyclonal Antibody (Pab)
Catalog # Azb18714c

Specification

(DANRE) ankrd13c Antibody (C-term) - Product Information

Application	WB,E
Primary Accession	O7ZUV0
Reactivity	Zebrafish
Host	Rabbit
Clonality	Polyclonal
Isotype	Rabbit IgG
Antigen Region	475-508

(DANRE) ankrd13c Antibody (C-term) - Additional Information

Gene ID 325167

Other Names

Ankyrin repeat domain-containing protein 13C, ankrd13c

Target/Specificity

This (DANRE) ankrd13c antibody is generated from a rabbit immunized with a KLH conjugated synthetic peptide between 475-508 amino acids of DANRE ankrd13c.

Dilution

WB~~1:1000

Format

Purified polyclonal antibody supplied in PBS with 0.09% (W/V) sodium azide. This antibody is purified through a protein A column, followed by peptide affinity purification.

Storage

Maintain refrigerated at 2-8°C for up to 2 weeks. For long term storage store at -20°C in small aliquots to prevent freeze-thaw cycles.

Precautions

(DANRE) ankrd13c Antibody (C-term) is for research use only and not for use in diagnostic or therapeutic procedures.

(DANRE) ankrd13c Antibody (C-term) - Protein Information

Name ankrd13c

Function Acts as a molecular chaperone for G protein-coupled receptors, regulating their biogenesis and exit from the ER.

Cellular Location

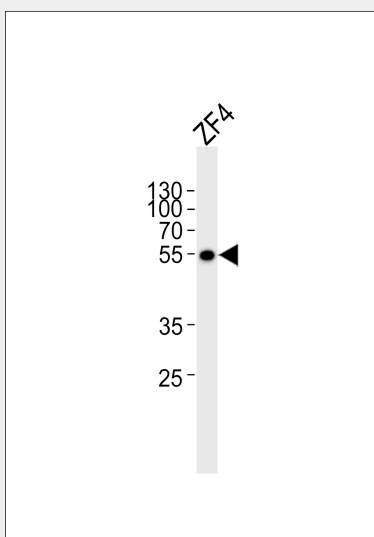
Endoplasmic reticulum membrane. Note=Associated with the cytosolic side.

(DANRE) ankrd13c Antibody (C-term) - Protocols

Provided below are standard protocols that you may find useful for product applications.

- [Western Blot](#)
- [Blocking Peptides](#)
- [Dot Blot](#)
- [Immunohistochemistry](#)
- [Immunofluorescence](#)
- [Immunoprecipitation](#)
- [Flow Cytometry](#)
- [Cell Culture](#)

(DANRE) ankrd13c Antibody (C-term) - Images



Western blot analysis of lysate from ZF4 cell line, using (DANRE) ankrd13c Antibody (C-term)(Cat. #Azb18714c). Azb18714c was diluted at 1:1000. A goat anti-rabbit IgG H&L(HRP) at 1:5000 dilution was used as the secondary antibody. Lysate at 35ug.

(DANRE) ankrd13c Antibody (C-term) - Background

Acts as a molecular chaperone for G protein-coupled receptors, regulating their biogenesis and exit from the ER (By similarity).