

(DANRE) dixdc1a Antibody (Center)
Purified Rabbit Polyclonal Antibody (Pab)
Catalog # Azb18712c

Specification

(DANRE) dixdc1a Antibody (Center) - Product Information

| | |
|-------------------|------------------------|
| Application | WB,E |
| Primary Accession | Q804T6 |
| Reactivity | Zebrafish |
| Host | Rabbit |
| Clonality | Polyclonal |
| Isotype | Rabbit IgG |
| Antigen Region | 282-316 |

(DANRE) dixdc1a Antibody (Center) - Additional Information

Gene ID 360137

Other Names

Dixin-A, Coiled-coil protein DIX1-A, Coiled-coil-DIX1-A, DIX domain-containing protein 1-A, dixdc1a, ccd1, dixdc1

Target/Specificity

This (DANRE) dixdc1a antibody is generated from a rabbit immunized with a KLH conjugated synthetic peptide between 282-316 amino acids of DANRE dixdc1a.

Dilution

WB~~1:1000

Format

Purified polyclonal antibody supplied in PBS with 0.09% (W/V) sodium azide. This antibody is purified through a protein A column, followed by peptide affinity purification.

Storage

Maintain refrigerated at 2-8°C for up to 2 weeks. For long term storage store at -20°C in small aliquots to prevent freeze-thaw cycles.

Precautions

(DANRE) dixdc1a Antibody (Center) is for research use only and not for use in diagnostic or therapeutic procedures.

(DANRE) dixdc1a Antibody (Center) - Protein Information

Name dixdc1a

Synonyms ccd1, dixdc1

Function Functions as a positive effector of the Wnt signaling pathway regulating antero-posterior

neural patterning.

Cellular Location

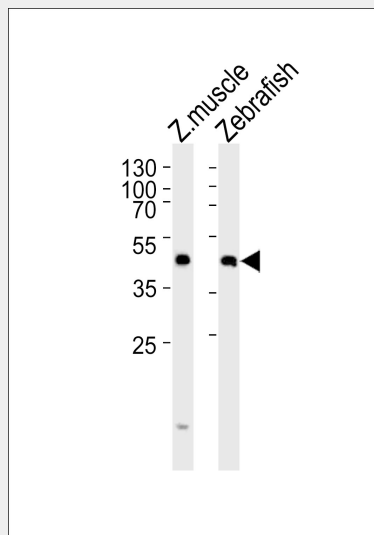
Cell junction, focal adhesion. Cytoplasm

(DANRE) dixdc1a Antibody (Center) - Protocols

Provided below are standard protocols that you may find useful for product applications.

- [Western Blot](#)
- [Blocking Peptides](#)
- [Dot Blot](#)
- [Immunohistochemistry](#)
- [Immunofluorescence](#)
- [Immunoprecipitation](#)
- [Flow Cytometry](#)
- [Cell Culture](#)

(DANRE) dixdc1a Antibody (Center) - Images



Western blot analysis of lysates from zebra fish muscle, Zebrafish tissue lysate (from left to right), using (DANRE) dixdc1a Antibody (Center)(Cat. #Azb18712c). Azb18712c was diluted at 1:1000 at each lane. A goat anti-rabbit IgG H&L(HRP) at 1:10000 dilution was used as the secondary antibody. Lysates at 35ug per lane.

(DANRE) dixdc1a Antibody (Center) - Background

Functions as a positive effector of the Wnt signaling pathway regulating antero-posterior neural patterning.

(DANRE) dixdc1a Antibody (Center) - References

Shiomi K.,et al.Curr. Biol. 13:73-77(2003).