

**DANRE mycl1a Antibody (N-term)**  
**Purified Rabbit Polyclonal Antibody (Pab)**  
**Catalog # Azb18711a**

**Specification**

---

**DANRE mycl1a Antibody (N-term) - Product Information**

Application	WB,E
Primary Accession	<a href="#">O9PSI9</a>
Reactivity	Zebrafish
Host	Rabbit
Clonality	Polyclonal
Isotype	Rabbit IgG
Calculated MW	41380
Antigen Region	80-113

**DANRE mycl1a Antibody (N-term) - Additional Information**

**Gene ID** 405873

**Other Names**

Protein L-Myc-1a, Protein L-Myc 1, zL-Myc, mycl1a {ECO:0000312|EMBL:AAH677231}, lmyc1, mycl1

**Target/Specificity**

This DANRE mycl1a antibody is generated from a rabbit immunized with a KLH conjugated synthetic peptide between 80-113 amino acids from the N-terminal region of human DANRE mycl1a.

**Dilution**

WB~~1:1000

**Format**

Purified polyclonal antibody supplied in PBS with 0.09% (W/V) sodium azide. This antibody is purified through a protein A column, followed by peptide affinity purification.

**Storage**

Maintain refrigerated at 2-8°C for up to 2 weeks. For long term storage store at -20°C in small aliquots to prevent freeze-thaw cycles.

**Precautions**

DANRE mycl1a Antibody (N-term) is for research use only and not for use in diagnostic or therapeutic procedures.

**DANRE mycl1a Antibody (N-term) - Protein Information**

**Name** mycl1a {ECO:0000312|EMBL:AAH67723.1}

**Synonyms** lmyc1, mycl1

**Cellular Location**

Nucleus {ECO:0000250|UniProtKB:P12524, ECO:0000255|PROSITE-ProRule:PRU00981}

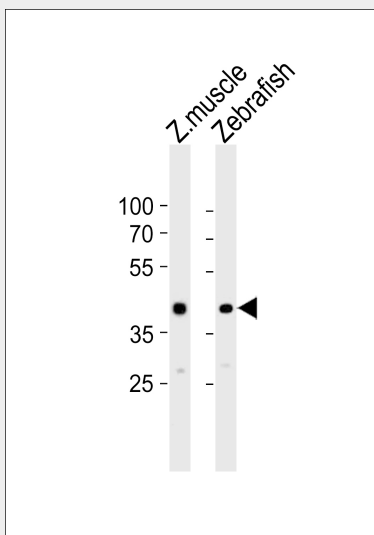
**Tissue Location**

Uterus..

**DANRE mycl1a Antibody (N-term) - Protocols**

Provided below are standard protocols that you may find useful for product applications.

- [Western Blot](#)
- [Blocking Peptides](#)
- [Dot Blot](#)
- [Immunohistochemistry](#)
- [Immunofluorescence](#)
- [Immunoprecipitation](#)
- [Flow Cytometry](#)
- [Cell Culture](#)

**DANRE mycl1a Antibody (N-term) - Images**

Western blot analysis of lysates from zebra fish muscle, Zebrafish tissue lysate (from left to right), using DANRE mycl1a Antibody (N-term)(Cat. #Azb18711a). Azb18711a was diluted at 1:1000 at each lane. A goat anti-rabbit IgG H&L(HRP) at 1:5000 dilution was used as the secondary antibody. Lysates at 35ug per lane.

**DANRE mycl1a Antibody (N-term) - References**

Schreiber-Agus N.,et al.Mol. Cell. Biol. 13:2765-2775(1993).