

**ZNF624 Antibody (Center)**  
**Purified Rabbit Polyclonal Antibody (Pab)**  
**Catalog # Azb18709c**

**Specification**

---

**ZNF624 Antibody (Center) - Product Information**

Application	WB,E
Primary Accession	<a href="#">O9P2J8</a>
Reactivity	Human
Host	Rabbit
Clonality	Polyclonal
Isotype	Rabbit IgG
Calculated MW	99929

**ZNF624 Antibody (Center) - Additional Information**

**Gene ID** 57547

**Other Names**

Zinc finger protein 624, ZNF624, KIAA1349

**Target/Specificity**

This ZNF624 antibody is generated from a rabbit immunized with a KLH conjugated synthetic peptide between 264-298 amino acids from the Central region of human ZNF624.

**Dilution**

WB~~1:1000

**Format**

Purified polyclonal antibody supplied in PBS with 0.09% (W/V) sodium azide. This antibody is purified through a protein A column, followed by peptide affinity purification.

**Storage**

Maintain refrigerated at 2-8°C for up to 2 weeks. For long term storage store at -20°C in small aliquots to prevent freeze-thaw cycles.

**Precautions**

ZNF624 Antibody (Center) is for research use only and not for use in diagnostic or therapeutic procedures.

**ZNF624 Antibody (Center) - Protein Information**

**Name** ZNF624

**Synonyms** KIAA1349

**Function** May be involved in transcriptional regulation.

## Cellular Location

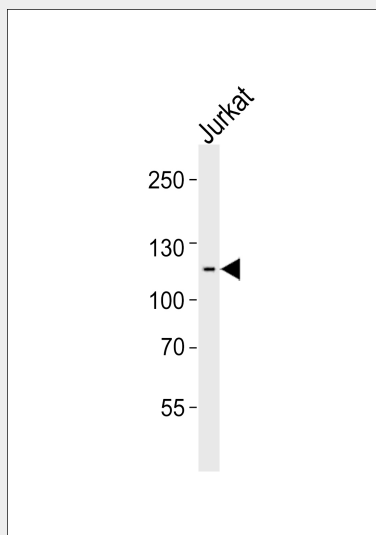
Nucleus.

## ZNF624 Antibody (Center) - Protocols

Provided below are standard protocols that you may find useful for product applications.

- [Western Blot](#)
- [Blocking Peptides](#)
- [Dot Blot](#)
- [Immunohistochemistry](#)
- [Immunofluorescence](#)
- [Immunoprecipitation](#)
- [Flow Cytometry](#)
- [Cell Culture](#)

## ZNF624 Antibody (Center) - Images



Western blot analysis of lysate from Jurkat cell line, using ZNF624 Antibody (Center)(Cat. #Azb18709c). Azb18709c was diluted at 1:1000. A goat anti-rabbit IgG H&L(HRP) at 1:5000 dilution was used as the secondary antibody. Lysate at 35ug.

## ZNF624 Antibody (Center) - Background

May be involved in transcriptional regulation.

## ZNF624 Antibody (Center) - References

Nagase T.,et al.DNA Res. 7:65-73(2000).  
Ota T.,et al.Nat. Genet. 36:40-45(2004).  
Zody M.C.,et al.Nature 440:1045-1049(2006).  
Sjoebloom T.,et al.Science 314:268-274(2006).