

DANRE stk3(36kDa subunit) Antibody (Center)
Purified Rabbit Polyclonal Antibody (Pab)
Catalog # Azb10042a

Specification

DANRE stk3(36kDa subunit) Antibody (Center) - Product Information

Application	WB,E
Primary Accession	O7ZUQ3
Reactivity	Human, Zebrafish
Host	Rabbit
Clonality	Polyclonal
Isotype	Rabbit IgG
Calculated MW	56081

DANRE stk3(36kDa subunit) Antibody (Center) - Additional Information

Gene ID 324125

Other Names

Serine/threonine-protein kinase 3, Serine/threonine-protein kinase 3 36kDa subunit, MST2/N, Serine/threonine-protein kinase 3 20kDa subunit, MST2/C, stk3

Target/Specificity

This DANRE stk3(36kDa subunit) antibody is generated from a rabbit immunized with a KLH conjugated synthetic peptide between 228-252 amino acids from the Central region of DANRE stk3(36kDa subunit).

Dilution

WB~~1:1000

Format

Purified polyclonal antibody supplied in PBS with 0.09% (W/V) sodium azide. This antibody is purified through a protein A column, followed by peptide affinity purification.

Storage

Maintain refrigerated at 2-8°C for up to 2 weeks. For long term storage store at -20°C in small aliquots to prevent freeze-thaw cycles.

Precautions

DANRE stk3(36kDa subunit) Antibody (Center) is for research use only and not for use in diagnostic or therapeutic procedures.

DANRE stk3(36kDa subunit) Antibody (Center) - Protein Information

Name stk3

Function Stress-activated, pro-apoptotic kinase which, following caspase-cleavage, enters the nucleus and induces chromatin condensation followed by internucleosomal DNA fragmentation.

Key component of the Hippo signaling pathway which plays a pivotal role in organ size control and tumor suppression by restricting proliferation and promoting apoptosis. The core of this pathway is composed of a kinase cascade wherein *stk3/mst2* and *stk4/mst1*, in complex with its regulatory protein *sav1*, phosphorylates and activates *lats1/2* in complex with its regulatory protein *mob1*, which in turn phosphorylates and inactivates *yap1* oncoprotein and *wwtr1/taz*. Phosphorylation of *yap1* by *lats2* inhibits its translocation into the nucleus to regulate cellular genes important for cell proliferation, cell death, and cell migration.

Cellular Location

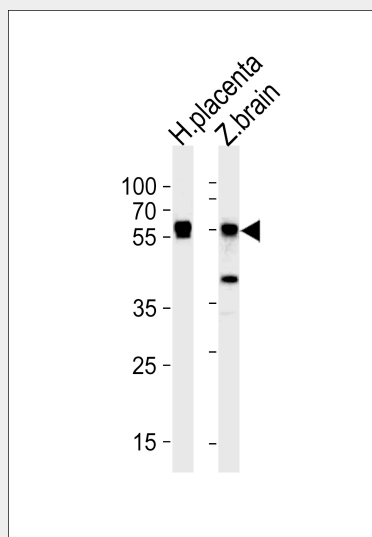
Cytoplasm {ECO:0000250|UniProtKB:Q13188}. Nucleus {ECO:0000250|UniProtKB:Q13188}.
Note=The caspase-cleaved form cycles between nucleus and cytoplasm.
{ECO:0000250|UniProtKB:Q13188}

DANRE *stk3*(36kDa subunit) Antibody (Center) - Protocols

Provided below are standard protocols that you may find useful for product applications.

- [Western Blot](#)
- [Blocking Peptides](#)
- [Dot Blot](#)
- [Immunohistochemistry](#)
- [Immunofluorescence](#)
- [Immunoprecipitation](#)
- [Flow Cytometry](#)
- [Cell Culture](#)

DANRE *stk3*(36kDa subunit) Antibody (Center) - Images



Western blot analysis of lysates from human placenta and zebra fish brain tissue (from left to right), using Zebrafish *stk3*(36kDa subunit) Antibody (Center) (Cat. #Az10042a). Az10042a was diluted at 1:1000 at each lane. A goat anti-rabbit IgG H&L (HRP) at 1:5000 dilution was used as the secondary antibody. Lysates at 35ug per lane.

DANRE *stk3*(36kDa subunit) Antibody (Center) - Background

Stress-activated, pro-apoptotic kinase which, following caspase-cleavage, enters the nucleus and induces chromatin condensation followed by internucleosomal DNA fragmentation. Key component

of the Hippo signaling pathway which plays a pivotal role in organ size control and tumor suppression by restricting proliferation and promoting apoptosis. The core of this pathway is composed of a kinase cascade wherein *stk3/mst2* and *stk4/mst1*, in complex with its regulatory protein *sav1*, phosphorylates and activates *lats1/2* in complex with its regulatory protein *mob1*, which in turn phosphorylates and inactivates *yap1* oncoprotein and *wwtr1/taz*. Phosphorylation of *yap1* by *lats2* inhibits its translocation into the nucleus to regulate cellular genes important for cell proliferation, cell death, and cell migration (By similarity).