

DANRE shha Antibody (Center)
Purified Rabbit Polyclonal Antibody (Pab)
Catalog # Azb10041a

Specification

DANRE shha Antibody (Center) - Product Information

Application	WB,E
Primary Accession	O92008
Reactivity	Zebrafish
Host	Rabbit
Clonality	Polyclonal
Isotype	Rabbit IgG
Calculated MW	46403
Antigen Region	151-162

DANRE shha Antibody (Center) - Additional Information

Gene ID 30269

Other Names

Sonic hedgehog protein A, SHHA, VHH-1, Sonic hedgehog protein A N-product, Sonic hedgehog protein A C-product, shha, shh, vhh1

Target/Specificity

This shha antibody is generated from a rabbit immunized with a KLH conjugated synthetic peptide between 151-162 amino acids from the Central region of DANRE shha.

Dilution

WB~~1:1000

Format

Purified polyclonal antibody supplied in PBS with 0.09% (W/V) sodium azide. This antibody is purified through a protein A column, followed by peptide affinity purification.

Storage

Maintain refrigerated at 2-8°C for up to 2 weeks. For long term storage store at -20°C in small aliquots to prevent freeze-thaw cycles.

Precautions

DANRE shha Antibody (Center) is for research use only and not for use in diagnostic or therapeutic procedures.

DANRE shha Antibody (Center) - Protein Information

Name shha

Synonyms shh, vhh1

Function [Sonic hedgehog protein]: The C-terminal part of the sonic hedgehog protein precursor displays an autoproteolysis and a cholesterol transferase activity (By similarity). Both activities result in the cleavage of the full-length protein into two parts (ShhN and ShhC) followed by the covalent attachment of a cholesterol moiety to the C-terminal of the newly generated ShhN (By similarity). Both activities occur in the reticulum endoplasmic (By similarity). Once cleaved, ShhC is degraded in the endoplasmic reticulum (By similarity).

Cellular Location

[Sonic hedgehog protein]: Endoplasmic reticulum membrane {ECO:0000250|UniProtKB:Q15465}. Golgi apparatus membrane {ECO:0000250|UniProtKB:Q15465}. Note=Co-localizes with HHAT in the ER and Golgi membrane. {ECO:0000250|UniProtKB:Q15465}

Tissue Location

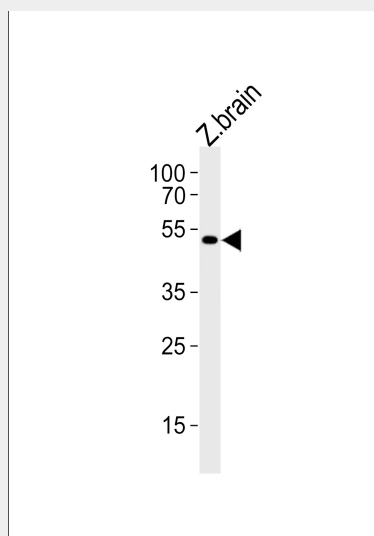
Expressed in the ventral midline of the neural tube and brain. Also found in the notochord and in developing fin bud. In the developing brain, expression occurs in domains that include a discrete region in the floor of the diencephalon

DANRE shha Antibody (Center) - Protocols

Provided below are standard protocols that you may find useful for product applications.

- [Western Blot](#)
- [Blocking Peptides](#)
- [Dot Blot](#)
- [Immunohistochemistry](#)
- [Immunofluorescence](#)
- [Immunoprecipitation](#)
- [Flow Cytometry](#)
- [Cell Culture](#)

DANRE shha Antibody (Center) - Images



Shha Antibody (Center) (Cat.# Azb10041a) western blot analysis in zebrafish brain tissue lysate (35ug/lane). This demonstrates that the (DANRE) shha antibody detected zebrafish shha protein (arrow).

DANRE shha Antibody (Center) - Background

Intercellular signal essential for a variety of patterning events during development. Signal produced by the notochord that induces somite patterning, dorso-ventral patterning of the brain and early patterning of the developing eyes. Displays floor plate-inducing activity. Binds to the patched (PTC) receptor, which functions in association with smoothed (SMO), to activate the transcription of target genes. In the absence of SHH, PTC represses the constitutive signaling activity of SMO (By similarity).

DANRE shha Antibody (Center) - References

- Roelink H., et al. Cell 76:761-775(1994).
Ekker S.C., et al. Curr. Biol. 5:944-955(1995).
Fietz M.J., et al. Development Suppl. 120:43-51(1994).
Muller F., et al. Development 126:2103-2116(1999).
Zardoya R., et al. Proc. Natl. Acad. Sci. U.S.A. 93:13036-13041(1996).