

**DANRE foxh1 Antibody (Center)**  
**Affinity Purified Rabbit Polyclonal Antibody (Pab)**  
**Catalog # Azb10035a**

**Specification**

---

**DANRE foxh1 Antibody (Center) - Product Information**

Application	WB,E
Primary Accession	<a href="#">O919E1</a>
Reactivity	Zebrafish
Host	Rabbit
Clonality	Polyclonal
Isotype	Rabbit IgG
Calculated MW	51620
Antigen Region	313-334

**DANRE foxh1 Antibody (Center) - Additional Information**

**Gene ID** 57930

**Other Names**

Forkhead box protein H1, Forkhead activin signal transducer 1, Fast-1, Schmalspur protein, foxh1, fast1, sur

**Target/Specificity**

This DANRE foxh1 antibody is generated from rabbits immunized with a KLH conjugated synthetic peptide between 313-334 amino acids from the Central region of DANRE foxh1.

**Dilution**

WB~~1:1000

**Format**

Purified polyclonal antibody supplied in PBS with 0.09% (W/V) sodium azide. This antibody is purified through a protein A column, followed by peptide affinity purification.

**Storage**

Maintain refrigerated at 2-8°C for up to 2 weeks. For long term storage store at -20°C in small aliquots to prevent freeze-thaw cycles.

**Precautions**

DANRE foxh1 Antibody (Center) is for research use only and not for use in diagnostic or therapeutic procedures.

**DANRE foxh1 Antibody (Center) - Protein Information**

**Name** foxh1

**Synonyms** fast1, sur

**Function** Transcriptional activator. Activates an activin response element (ARE). Recognizes and binds to the DNA sequence 5'- TGT[GT][GT]ATT-3'. Modulator of nodal signaling required for organizer formation. Also required for the development of dorsal axial structures and left-right symmetry.

**Cellular Location**

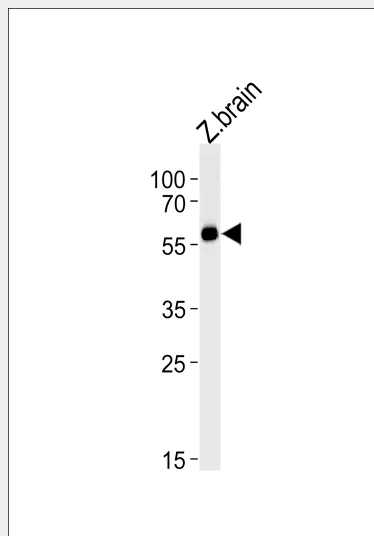
Nucleus {ECO:0000255|PROSITE-ProRule:PRU00089, ECO:0000269|PubMed:10996071}

**DANRE foxh1 Antibody (Center) - Protocols**

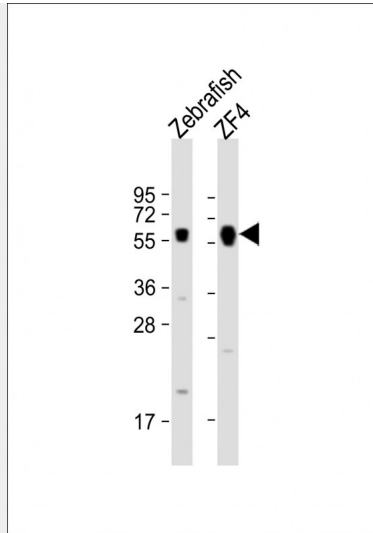
Provided below are standard protocols that you may find useful for product applications.

- [Western Blot](#)
- [Blocking Peptides](#)
- [Dot Blot](#)
- [Immunohistochemistry](#)
- [Immunofluorescence](#)
- [Immunoprecipitation](#)
- [Flow Cytometry](#)
- [Cell Culture](#)

**DANRE foxh1 Antibody (Center) - Images**



DANRE foxh1 Antibody (Center) (Cat. #Azb10035a) western blot analysis in zebra fish brain tissue lysates (35ug/lane). This demonstrates the DANRE foxh1 antibody detected the DANRE foxh1 protein (arrow).



All lanes : Anti-(DANRE) foxh1 Antibody (Center) at 1:1000 dilution Lane 1: Zebrafish lysate Lane 2: ZF4 whole cell lysate Lysates/proteins at 20 µg per lane. Secondary Goat Anti-Rabbit IgG, (H+L), Peroxidase conjugated at 1/10000 dilution. Predicted band size : 52 kDa Blocking/Dilution buffer: 5% NFDN/TBST.

#### **DANRE foxh1 Antibody (Center) - Background**

Transcriptional activator. Activates an activin response element (ARE). Recognizes and binds to the DNA sequence 5'-TGT[GT][GT]ATT-3'. Modulator of nodal signaling required for organizer formation. Also required for the development of dorsal axial structures and left-right symmetry.

#### **DANRE foxh1 Antibody (Center) - References**

Pogoda H.-M., et al. *Curr. Biol.* 10:1041-1049(2000).  
Sirotkin H.I., et al. *Curr. Biol.* 10:1051-1054(2000).  
Boggetti B., et al. *Mech. Dev.* 99:187-190(2000).