

**DANRE ccdc89 Antibody (C-term)**  
**Affinity Purified Rabbit Polyclonal Antibody (Pab)**  
**Catalog # Azb10026b**

**Specification**

---

**DANRE ccdc89 Antibody (C-term) - Product Information**

Application	WB,E
Primary Accession	<a href="#">A8WG43</a>
Reactivity	Zebrafish
Host	Rabbit
Clonality	Polyclonal
Isotype	Rabbit IgG
Calculated MW	42156
Antigen Region	265-293

**DANRE ccdc89 Antibody (C-term) - Additional Information**

**Gene ID** 100136847

**Other Names**

Coiled-coil domain-containing protein 89, Bc8 orange-interacting protein, ccdc89  
{ECO:0000250|UniProtKB:Q8N998}

**Target/Specificity**

This DANRE ccdc89 antibody is generated from rabbits immunized with a KLH conjugated synthetic peptide between 265-293 amino acids from the C-terminal region of DANRE ccdc89.

**Dilution**

WB~~1:1000

**Format**

Purified polyclonal antibody supplied in PBS with 0.09% (W/V) sodium azide. This antibody is purified through a protein A column, followed by peptide affinity purification.

**Storage**

Maintain refrigerated at 2-8°C for up to 2 weeks. For long term storage store at -20°C in small aliquots to prevent freeze-thaw cycles.

**Precautions**

DANRE ccdc89 Antibody (C-term) is for research use only and not for use in diagnostic or therapeutic procedures.

**DANRE ccdc89 Antibody (C-term) - Protein Information**

**Name** ccdc89 {ECO:0000250|UniProtKB:Q8N998}

**Cellular Location**

Cytoplasm {ECO:0000250|UniProtKB:Q7ZW57}. Nucleus {ECO:0000250|UniProtKB:Q7ZW57}.

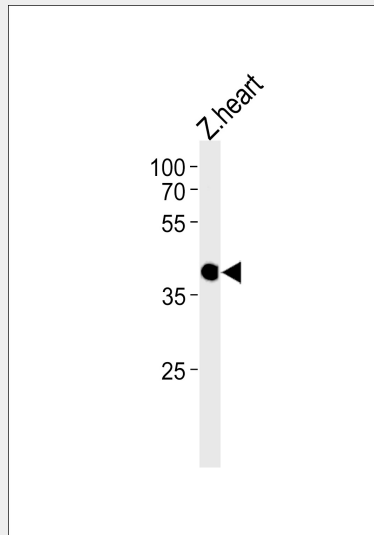
Note=Uniformly distributed within the cell, but becomes recruited to the nucleus upon binding to hey1

### DANRE ccdc89 Antibody (C-term) - Protocols

Provided below are standard protocols that you may find useful for product applications.

- [Western Blot](#)
- [Blocking Peptides](#)
- [Dot Blot](#)
- [Immunohistochemistry](#)
- [Immunofluorescence](#)
- [Immunoprecipitation](#)
- [Flow Cytometry](#)
- [Cell Culture](#)

### DANRE ccdc89 Antibody (C-term) - Images



DANRE ccdc89 Antibody (C-term) (Cat. #AzB10026b) western blot analysis in zebra fish heart tissue lysates (35ug/lane). This demonstrates the DANRE ccdc89 antibody detected the DANRE ccdc89 protein (arrow).

### DANRE ccdc89 Antibody (C-term) - References

Van Wayenbergh R., et al. Dev. Dyn. 228:716-725(2003).