

DANRE actba Antibody (Center)
Affinity Purified Rabbit Polyclonal Antibody (Pab)
Catalog # Azb10021c

Specification

DANRE actba Antibody (Center) - Product Information

Application	WB,E
Primary Accession	Q7ZV17
Other Accession	P60010 , P68136 , P68135 , P68137 , P68134 , P68133 , P68139 , P68138 , P63269 , P63268 , P63267 , P63270 , Q5E9B5 , A2BDB0 , P63259 , P63260 , P63261 , Q5ZMQ2 , P63258 , P04751 , P68035 , P68033 , P68032 , P68034 , Q3ZC07 , O93400 , P60711 , P29751 , O6OAO1 , P60710 , Q4R561 , P60709
Reactivity	Zebrafish
Predicted	C.Elegans, Drosophila, Xenopus, Chicken, Bovine, Human, Mouse, Rabbit, Rat, Hamster, Horse, Monkey, Pig, Sheep, Yeast
Host	Rabbit
Clonality	Polyclonal
Isotype	Rabbit IgG
Calculated MW	41767
Antigen Region	188-215

DANRE actba Antibody (Center) - Additional Information

Gene ID 57934

Other Names

Actin, cytoplasmic 1, Beta-actin-1, Actin, cytoplasmic 1, N-terminally processed, actba, bact, bactin1, bactzf

Target/Specificity

This DANRE actba antibody is generated from rabbits immunized with a KLH conjugated synthetic peptide between 188-215 amino acids from the Central region of DANRE actba.

Dilution

WB~~1:1000

Format

Purified polyclonal antibody supplied in PBS with 0.09% (W/V) sodium azide. This antibody is purified through a protein A column, followed by peptide affinity purification.

Storage

Maintain refrigerated at 2-8°C for up to 2 weeks. For long term storage store at -20°C in small aliquots to prevent freeze-thaw cycles.

Precautions

DANRE actba Antibody (Center) is for research use only and not for use in diagnostic or

therapeutic procedures.

DANRE actba Antibody (Center) - Protein Information

Name actba

Synonyms bact, bactin1, bactzf

Function Actin is a highly conserved protein that polymerizes to produce filaments that form cross-linked networks in the cytoplasm of cells. Actin exists in both monomeric (G-actin) and polymeric (F-actin) forms, both forms playing key functions, such as cell motility and contraction. In addition to their role in the cytoplasmic cytoskeleton, G- and F-actin also localize in the nucleus, and regulate gene transcription and motility and repair of damaged DNA.

Cellular Location

Cytoplasm, cytoskeleton {ECO:0000250|UniProtKB:P60710}. Nucleus {ECO:0000250|UniProtKB:O93400}

Tissue Location

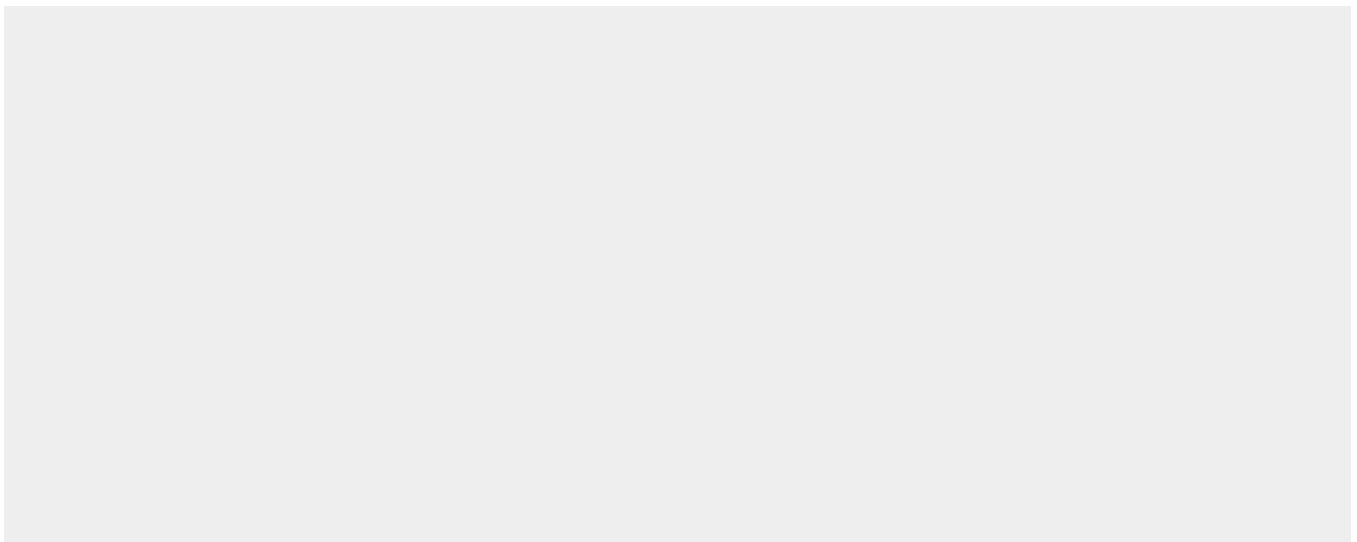
Skeletal muscle, heart, gill, digestive tissue and brain (PubMed:9987040). Widespread expression throughout the brain, with highest levels in regions where neuronal proliferation is greatest (PubMed:9987040).

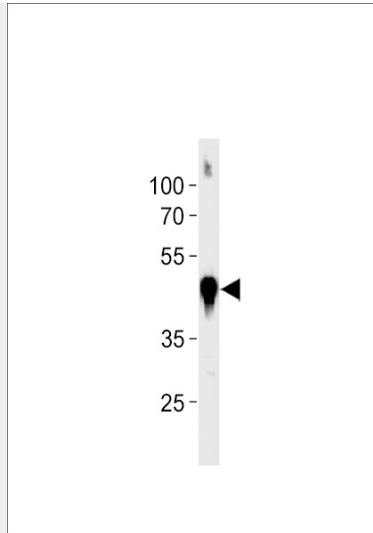
DANRE actba Antibody (Center) - Protocols

Provided below are standard protocols that you may find useful for product applications.

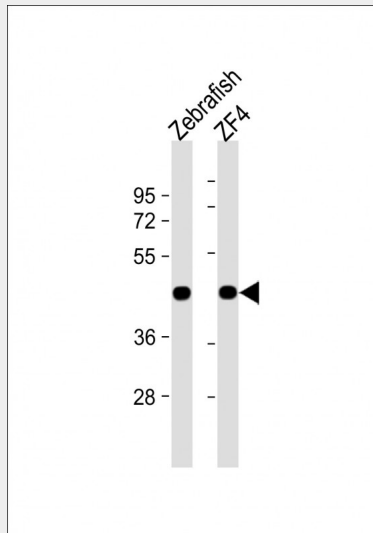
- [Western Blot](#)
- [Blocking Peptides](#)
- [Dot Blot](#)
- [Immunohistochemistry](#)
- [Immunofluorescence](#)
- [Immunoprecipitation](#)
- [Flow Cytometry](#)
- [Cell Culture](#)

DANRE actba Antibody (Center) - Images





DANRE actba Antibody (Center) (Cat. #Azb10021c) western blot analysis in zebra fish muscle tissue lysates (35ug/lane). This demonstrates the DANRE actba antibody detected the DANRE actba protein (arrow).



All lanes : Anti-DANRE actba Antibody (Center) at 1:1000 dilution Lane 1: Zebrafish lysate Lane 2: ZF4 whole cell lysate Lysates/proteins at 20 µg per lane. Secondary Goat Anti-Rabbit IgG, (H+L), Peroxidase conjugated at 1/10000 dilution. Predicted band size : 42 kDa Blocking/Dilution buffer: 5% NFDM/TBST.

DANRE actba Antibody (Center) - Background

Actins are highly conserved proteins that are involved in various types of cell motility and are ubiquitously expressed in all eukaryotic cells.

DANRE actba Antibody (Center) - References

Barrallo A., et al. Eur. J. Neurosci. 11:369-372(1999).