

**DANRE pax2a Antibody (Center)**  
**Affinity Purified Rabbit Polyclonal Antibody (Pab)**  
**Catalog # Azb10018a**

**Specification**

---

**DANRE pax2a Antibody (Center) - Product Information**

Application	WB,E
Primary Accession	<a href="#">O90268</a>
Reactivity	Zebrafish
Host	Rabbit
Clonality	Polyclonal
Isotype	Rabbit IgG
Calculated MW	44099
Antigen Region	258-284

**DANRE pax2a Antibody (Center) - Additional Information**

**Gene ID** 30425

**Other Names**

Paired box protein Pax-2a, No isthmus protein, Pax[Zf-b], pax2a, noi, pax21, paxzf-b

**Target/Specificity**

This DANRE pax2a antibody is generated from rabbits immunized with a KLH conjugated synthetic peptide between 258-284 amino acids from the Central region of DANRE pax2a.

**Dilution**

WB~~1:1000

**Format**

Purified polyclonal antibody supplied in PBS with 0.09% (W/V) sodium azide. This antibody is purified through a protein A column, followed by peptide affinity purification.

**Storage**

Maintain refrigerated at 2-8°C for up to 2 weeks. For long term storage store at -20°C in small aliquots to prevent freeze-thaw cycles.

**Precautions**

DANRE pax2a Antibody (Center) is for research use only and not for use in diagnostic or therapeutic procedures.

**DANRE pax2a Antibody (Center) - Protein Information**

**Name** pax2a

**Synonyms** noi, pax2.1, paxzf-b

**Function** Probable transcription factor involved in the development of the midbrain/hindbrain

boundary (MHB) organizer and specification of neuronal cell fates. Required for establishment of eng2 and eng3 gene expression in the midbrain and MHB primordium during late gastrulation.

#### Cellular Location

Nucleus.

#### Tissue Location

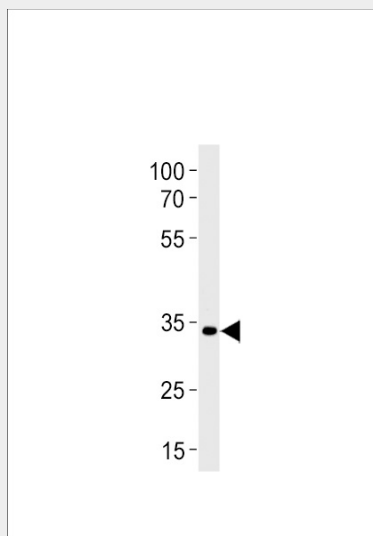
Expressed during embryogenesis in the kidney, optic stalk, midbrain, otic vesicle and a row of cells along the spinal cord and the hindbrain

### DANRE pax2a Antibody (Center) - Protocols

Provided below are standard protocols that you may find useful for product applications.

- [Western Blot](#)
- [Blocking Peptides](#)
- [Dot Blot](#)
- [Immunohistochemistry](#)
- [Immunofluorescence](#)
- [Immunoprecipitation](#)
- [Flow Cytometry](#)
- [Cell Culture](#)

### DANRE pax2a Antibody (Center) - Images



DANRE pax2a Antibody (Center) (Cat. #Azb10018a) western blot analysis in zebra fish brain tissue lysates (35ug/lane). This demonstrates the DANRE pax2a antibody detected the DANRE pax2a protein (arrow).

### DANRE pax2a Antibody (Center) - Background

Probable transcription factor involved in the development of the midbrain/hindbrain boundary (MHB) organizer and specification of neuronal cell fates. Required for establishment of eng2 and eng3 gene expression in the midbrain and MHB primordium during late gastrulation.

### DANRE pax2a Antibody (Center) - References

Krauss S., et al. Development 113:1193-1206(1991).  
Lun K., et al. Development 125:3049-3062(1998).