

Zebrafish Map2k4 Antibody (C-term)
Affinity Purified Rabbit Polyclonal Antibody (Pab)
Catalog # AZb14920b

Specification

Zebrafish Map2k4 Antibody (C-term) - Product Information

Application	WB,E
Primary Accession	A4UU31
Other Accession	Q07192 , P45985 , P47809 , Q9DGR7
Reactivity	Zebrafish
Predicted	Xenopus, Human, Mouse
Host	Rabbit
Clonality	Polyclonal
Isotype	Rabbit IgG
Antigen Region	258-287

Zebrafish Map2k4 Antibody (C-term) - Additional Information

Other Names

Dual specificity mitogen-activated protein kinase kinase 4;Map2k4;Jnkk1; Prkmk4; Sek1; Serk1;map2k4a;MKK4;zMKK4

Target/Specificity

This Zebrafish Map2k4 antibody is generated from rabbits immunized with a KLH conjugated synthetic peptide between 258-287 amino acids from the C-terminal region of Zebrafish Map2k4.

Dilution

WB~~1:1000

Format

Purified polyclonal antibody supplied in PBS with 0.09% (W/V) sodium azide. This antibody is purified through a protein A column, followed by peptide affinity purification.

Storage

Maintain refrigerated at 2-8°C for up to 2 weeks. For long term storage store at -20°C in small aliquots to prevent freeze-thaw cycles.

Precautions

Zebrafish Map2k4 Antibody (C-term) is for research use only and not for use in diagnostic or therapeutic procedures.

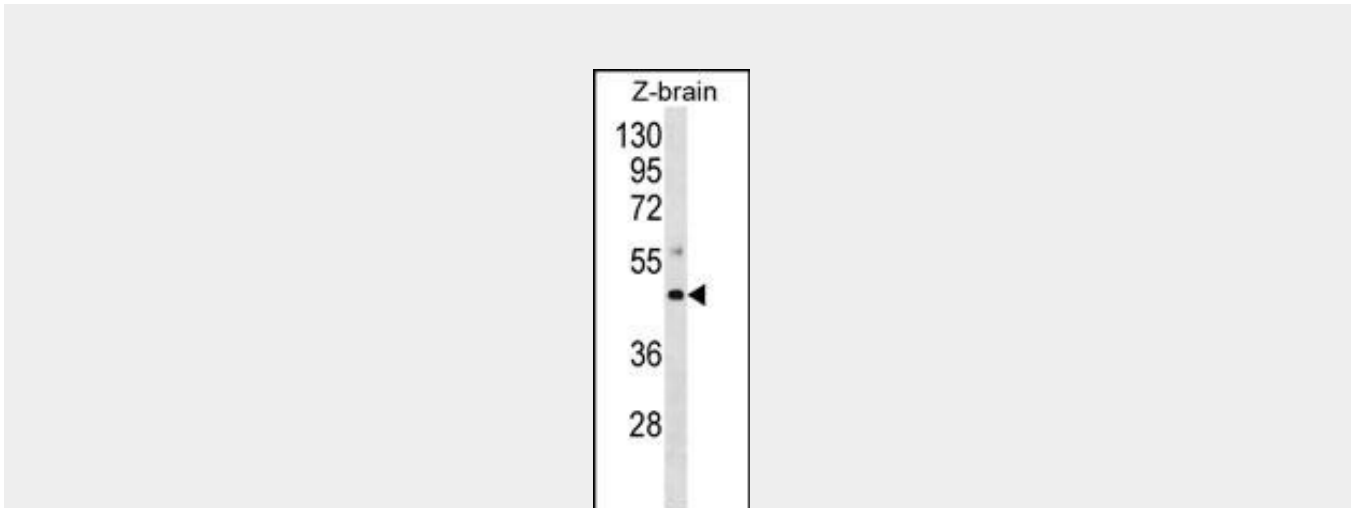
Zebrafish Map2k4 Antibody (C-term) - Protein Information

Zebrafish Map2k4 Antibody (C-term) - Protocols

Provided below are standard protocols that you may find useful for product applications.

- [Western Blot](#)
- [Blocking Peptides](#)
- [Dot Blot](#)
- [Immunohistochemistry](#)
- [Immunofluorescence](#)
- [Immunoprecipitation](#)
- [Flow Cytometry](#)
- [Cell Culture](#)

Zebrafish Map2k4 Antibody (C-term) - Images



Zebrafish Map2k4 Antibody (C-term) (Cat. #AP14920b) western blot analysis in zebra fish brain tissue lysates (35ug/lane). This demonstrates the Mouse Map2k4 antibody detected the Mouse Map2k4 protein (arrow).

Zebrafish Map2k4 Antibody (C-term) - Background

Dual specificity kinase that activates the JUN kinases MAPK8 (JNK1) and MAPK9 (JNK2) as well as MAPK14 (p38) but not MAPK1 (ERK2) or MAPK3 (ERK1).

Zebrafish Map2k4 Antibody (C-term) - References

Finegan, K.G., et al. *Cancer Res.* 70(14):5797-5806(2010) Ahn, Y.H., et al. *J. Biol. Chem.* 284(43):29399-29404(2009) Bogani, D., et al. *PLoS Biol.* 7 (9), E1000196 (2009) : Liu, W., et al. *Circ. Res.* 104(7):905-914(2009) Bulat, N., et al. *J. Lipid Res.* 50(1):81-89(2009)