

**MS4A1/CD20 Antibody (C-term)**  
**Mouse Monoclonal Antibody (Mab)**  
**Catalog # AW5685**

**Specification**

---

**MS4A1/CD20 Antibody (C-term) - Product Information**

Application	WB,E
Primary Accession	<a href="#">P11836</a>
Reactivity	Human, Mouse, Rat
Host	Mouse
Clonality	Monoclonal
Calculated MW	33kd KDa
Isotype	IgG1
Antigen Source	HUMAN

**MS4A1/CD20 Antibody (C-term) - Additional Information**

**Gene ID** 931

**Antigen Region**  
266-294

**Other Names**

B-lymphocyte antigen CD20, B-lymphocyte surface antigen B1, Bp35, Leukocyte surface antigen Leu-16, Membrane-spanning 4-domains subfamily A member 1, CD20, MS4A1, CD20

**Dilution**

WB~~1:3000

**Target/Specificity**

This MS4A1/CD20 antibody is generated from mice immunized with a KLH conjugated synthetic peptide between 266-294 amino acids from the C-terminal region of human MS4A1/CD20.

**Storage**

Maintain refrigerated at 2-8°C for up to 2 weeks. For long term storage store at -20°C in small aliquots to prevent freeze-thaw cycles.

**Precautions**

MS4A1/CD20 Antibody (C-term) is for research use only and not for use in diagnostic or therapeutic procedures.

**MS4A1/CD20 Antibody (C-term) - Protein Information**

**Name** MS4A1

**Synonyms** CD20

**Function**

B-lymphocyte-specific membrane protein that plays a role in the regulation of cellular calcium influx necessary for the development, differentiation, and activation of B-lymphocytes (PubMed:<a href="http://www.uniprot.org/citations/12920111" target="\_blank">12920111</a>, PubMed:<a href="http://www.uniprot.org/citations/3925015" target="\_blank">3925015</a>, PubMed:<a href="http://www.uniprot.org/citations/7684739" target="\_blank">7684739</a>). Functions as a store-operated calcium (SOC) channel component promoting calcium influx after activation by the B-cell receptor/BCR (PubMed:<a href="http://www.uniprot.org/citations/12920111" target="\_blank">12920111</a>, PubMed:<a href="http://www.uniprot.org/citations/18474602" target="\_blank">18474602</a>, PubMed:<a href="http://www.uniprot.org/citations/7684739" target="\_blank">7684739</a>).

#### Cellular Location

Cell membrane; Multi-pass membrane protein. Cell membrane; Lipid-anchor. Note=Constitutively associated with membrane rafts.

#### Tissue Location

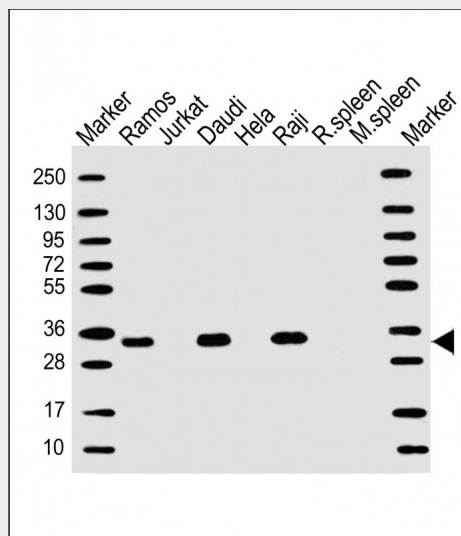
Expressed on B-cells.

### MS4A1/CD20 Antibody (C-term) - Protocols

Provided below are standard protocols that you may find useful for product applications.

- [Western Blot](#)
- [Blocking Peptides](#)
- [Dot Blot](#)
- [Immunohistochemistry](#)
- [Immunofluorescence](#)
- [Immunoprecipitation](#)
- [Flow Cytometry](#)
- [Cell Culture](#)

### MS4A1/CD20 Antibody (C-term) - Images



All lanes : Anti-MS4A1/CD20 Antibody (C-term) at 1:3000 dilution Lane 1: Ramos whole cell lysate Lane 2: Jurkat whole cell lysate Lane 3: Daudi whole cell lysate Lane 4: Hela whole cell lysate Lane 5: Raji whole cell lysate Lane 6: Rat spleen cell lysate Lane 7: Mouse spleen cell lysate Lysates/proteins at 20 µg per lane. Secondary Goat Anti-mouse IgG, (H+L), Peroxidase conjugated

at 1/10000 dilution. Predicted band size : 33 kDa Blocking/Dilution buffer: 5% NFDm/TBST.

### **MS4A1/CD20 Antibody (C-term) - Background**

This gene encodes a member of the membrane-spanning 4A gene family. Members of this nascent protein family are characterized by common structural features and similar intron/exon splice boundaries and display unique expression patterns among hematopoietic cells and nonlymphoid tissues. This gene encodes a B-lymphocyte surface molecule which plays a role in the development and differentiation of B-cells into plasma cells. This family member is localized to 11q12, among a cluster of family members. Alternative splicing of this gene results in two transcript variants which encode the same protein.

### **MS4A1/CD20 Antibody (C-term) - References**

Weber, M.S., et al. *Ann. Neurol.* 68(3):369-383(2010)  
Wu, D., et al. *Am. J. Clin. Pathol.* 134(2):258-265(2010)  
de Haij, S., et al. *Cancer Res.* 70(8):3209-3217(2010)  
Beers, S.A., et al. *Semin. Hematol.* 47(2):107-114(2010)  
Davila, S., et al. *Genes Immun.* 11(3):232-238(2010)