

beta II Tubulin Antibody
Purified Rabbit Polyclonal Antibody (Pab)
Catalog # AW5682

Specification

beta II Tubulin Antibody - Product Information

Application	WB, FC,E
Primary Accession	Q7TMM9
Other Accession	P09203 , Q9NFZ7 , Q13885 , Q4R5B3 , P85108 , Q6B856 , Q9BVA1 , Q9CWF2 , Q3KRE8 , P32882 , P13602 , Q9NFZ5 , P30156 , P20802 , Q59837 , P02554
Reactivity	Human, Mouse, Rat
Predicted	Chicken, Monkey, Bovine, Xenopus, Pig
Host	Rabbit
Clonality	Polyclonal
Calculated MW	M=50;H=50;R=50 KDa
Isotype	Rabbit IgG
Antigen Source	HUMAN

beta II Tubulin Antibody - Additional Information

Gene ID 22151

Antigen Region
30-46

Other Names
Tubulin beta-2A chain, Tubb2a, Tubb2

Dilution
WB~~1:2000
FC~~1:25

Target/Specificity
This antibody is generated from a rabbit immunized with a KLH conjugated synthetic peptide between 14-46 amino acids from human.

Storage
Maintain refrigerated at 2-8°C for up to 2 weeks. For long term storage store at -20°C in small aliquots to prevent freeze-thaw cycles.

Precautions
beta II Tubulin Antibody is for research use only and not for use in diagnostic or therapeutic procedures.

beta II Tubulin Antibody - Protein Information

Name Tubb2a

Synonyms Tubb2

Function

Tubulin is the major constituent of microtubules, a cylinder consisting of laterally associated linear protofilaments composed of alpha- and beta-tubulin heterodimers. Microtubules grow by the addition of GTP-tubulin dimers to the microtubule end, where a stabilizing cap forms. Below the cap, tubulin dimers are in GDP-bound state, owing to GTPase activity of alpha-tubulin.

Cellular Location

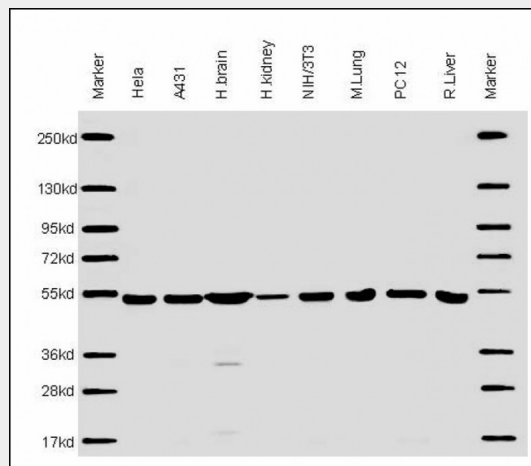
Cytoplasm, cytoskeleton.

beta II Tubulin Antibody - Protocols

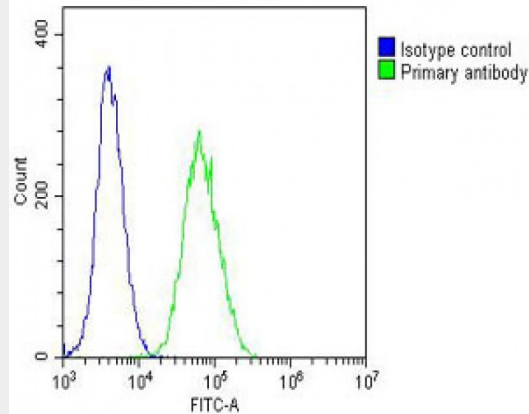
Provided below are standard protocols that you may find useful for product applications.

- [Western Blot](#)
- [Blocking Peptides](#)
- [Dot Blot](#)
- [Immunohistochemistry](#)
- [Immunofluorescence](#)
- [Immunoprecipitation](#)
- [Flow Cytometry](#)
- [Cell Culture](#)

beta II Tubulin Antibody - Images



All lanes : Anti-beta II Tubulin at 1:2000 dilution Lane 1: HeLa whole cell lysate Lane 2: A431 whole cell lysate Lane 3: human brain lysate Lane 4: human Kidney lysate Lane 5: NIH/3T3 whole cell lysate Lane 5: mouse lung lysate Lane 5: PC12 whole cell lysate Lane 5: rat liver lysate Lysates/proteins at 20 µg per lane. Secondary Goat Anti-Rabbit IgG, (H+L), Peroxidase conjugated at 1/10000 dilution. Predicted band size : 55 kDa Blocking/Dilution buffer: 5% NFDM/TBST.



Overlay histogram showing NIH/3T3 cells stained with AW5682 (green line). The cells were fixed with 2% paraformaldehyde (10 min) and then permeabilized with 90% methanol for 10 min. The cells were then incubated in 2% bovine serum albumin to block non-specific protein-protein interactions followed by the antibody (AW5682, 1:25 dilution) for 60 min at 37°C. The secondary antibody used was Goat-Anti-Rabbit IgG, DyLight® 488 Conjugated Highly Cross-Adsorbed(OH191631) at 1/200 dilution for 40 min at 37°C. Isotype control antibody (blue line) was rabbit IgG (1µg/1x10⁶ cells) used under the same conditions. Acquisition of >10, 000 events was performed.

beta II Tubulin Antibody - Background

Tubulin is the major constituent of microtubules. It binds two moles of GTP, one at an exchangeable site on the beta chain and one at a non-exchangeable site on the alpha chain (By similarity).

beta II Tubulin Antibody - References

Carninci P.,et al.Science 309:1559-1563(2005).
 Lubec G.,et al.Submitted (JAN-2009) to UniProtKB.
 Janke C.,et al.Science 308:1758-1762(2005).
 Rogowski K.,et al.Cell 137:1076-1087(2009).
 Yoshida K.,et al.Biochem. Biophys. Res. Commun. 389:506-511(2009).