

**ERLIN2 Antibody (C-term)**  
**Affinity Purified Rabbit Polyclonal Antibody (Pab)**  
**Catalog # AW5675**

**Specification**

---

**ERLIN2 Antibody (C-term) - Product Information**

Application	WB,E
Primary Accession	<a href="#">O94905</a>
Other Accession	<a href="#">Q5R7C5</a>
Reactivity	Human, Mouse, Rat
Host	Rabbit
Clonality	Polyclonal
Calculated MW	H=38;M=38;R=38 KDa
Isotype	Rabbit IgG
Antigen Source	HUMAN

**ERLIN2 Antibody (C-term) - Additional Information**

**Gene ID** 11160

**Antigen Region**  
307-333

**Other Names**

Erlin-2, Endoplasmic reticulum lipid raft-associated protein 2, Stomatin-prohibitin-flotillin-Hflc/K domain-containing protein 2, SPFH domain-containing protein 2, ERLIN2, C8orf2, SPFH2

**Dilution**

WB~~1:1000

**Target/Specificity**

This ERLIN2 antibody is generated from rabbits immunized with a KLH conjugated synthetic peptide between 307-333 amino acids from the C-terminal region of human ERLIN2.

**Storage**

Maintain refrigerated at 2-8°C for up to 2 weeks. For long term storage store at -20°C in small aliquots to prevent freeze-thaw cycles.

**Precautions**

ERLIN2 Antibody (C-term) is for research use only and not for use in diagnostic or therapeutic procedures.

**ERLIN2 Antibody (C-term) - Protein Information**

**Name** ERLIN2

**Synonyms** C8orf2, SPFH2

### Function

Component of the ERLIN1/ERLIN2 complex which mediates the endoplasmic reticulum-associated degradation (ERAD) of inositol 1,4,5- trisphosphate receptors (IP3Rs) such as ITPR1 (PubMed:<a href="http://www.uniprot.org/citations/17502376" target="\_blank">17502376</a>, PubMed:<a href="http://www.uniprot.org/citations/19240031" target="\_blank">19240031</a>). Promotes sterol-accelerated ERAD of HMGCR probably implicating an AMFR/gp78-containing ubiquitin ligase complex (PubMed:<a href="http://www.uniprot.org/citations/21343306" target="\_blank">21343306</a>). Involved in regulation of cellular cholesterol homeostasis by regulation the SREBP signaling pathway. May promote ER retention of the SCAP-SREBF complex (PubMed:<a href="http://www.uniprot.org/citations/24217618" target="\_blank">24217618</a>).

### Cellular Location

Endoplasmic reticulum membrane; Single-pass type II membrane protein. Note=Associated with lipid raft-like domains of the endoplasmic reticulum membrane

### Tissue Location

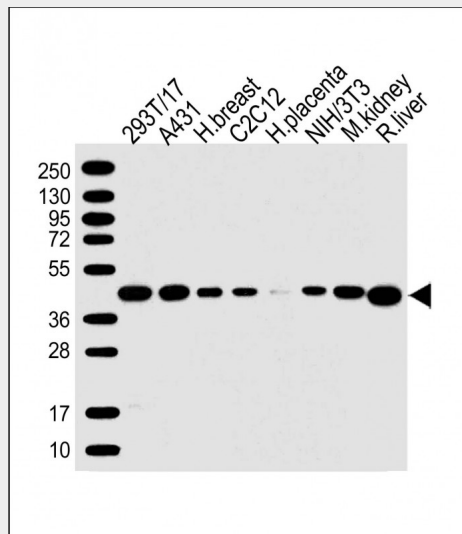
Ubiquitous..

### ERLIN2 Antibody (C-term) - Protocols

Provided below are standard protocols that you may find useful for product applications.

- [Western Blot](#)
- [Blocking Peptides](#)
- [Dot Blot](#)
- [Immunohistochemistry](#)
- [Immunofluorescence](#)
- [Immunoprecipitation](#)
- [Flow Cytometry](#)
- [Cell Culture](#)

### ERLIN2 Antibody (C-term) - Images



All lanes : Anti-ERLIN2 Antibody (C-term) at 1:1000 dilution Lane 1: 293T/17 whole cell lysate Lane 2: A431 whole cell lysate Lane 3: human breast lysate Lane 4: C2C12 whole cell lysate Lane 5: human placenta lysate Lane 6: NIH/3T3 whole cell lysate Lane 7: mouse kidney lysate Lane 8: rat liver lysate Lysates/proteins at 20 µg per lane. Secondary Goat Anti-Rabbit IgG, (H+L),

Peroxidase conjugated at 1/10000 dilution. Predicted band size : 38 kDa Blocking/Dilution buffer: 5% NFDM/TBST.

#### **ERLIN2 Antibody (C-term) - Background**

Component of the ERLIN1/ERLIN2 complex which mediates the endoplasmic reticulum-associated degradation (ERAD) of inositol 1,4,5-trisphosphate receptors (IP3Rs). Also involved in ITPR1 degradation by the ERAD pathway.

#### **ERLIN2 Antibody (C-term) - References**

Wang, Y., et al. Biochim. Biophys. Acta 1793(11):1710-1718(2009)  
Pearce, M.M., et al. J. Biol. Chem. 284(16):10433-10445(2009)  
Pearce, M.M., et al. J. Biol. Chem. 282(28):20104-20115(2007)  
Browman, D.T., et al. J. Cell. Sci. 119 (PT 15), 3149-3160 (2006) :  
Garcia, M.J., et al. Oncogene 24(33):5235-5245(2005)