

Glu-Glu tag Antibody
Purified Rabbit Polyclonal Antibody (Pab)
Catalog # AW5671

Specification

Glu-Glu tag Antibody - Product Information

Application	WB,E
Primary Accession	NA
Host	Rabbit
Clonality	Polyclonal
Calculated MW	42 KDa
Isotype	Rabbit IgG
Antigen Source	HUMAN

Glu-Glu tag Antibody - Additional Information

Antigen Region

NA

Dilution

WB~~1:1000

Target/Specificity

This Glu-Glu tag antibody is generated from a rabbit immunized with a KLH conjugated synthetic peptide of Glu-Glu tag.

Storage

Maintain refrigerated at 2-8°C for up to 2 weeks. For long term storage store at -20°C in small aliquots to prevent freeze-thaw cycles.

Precautions

Glu-Glu tag Antibody is for research use only and not for use in diagnostic or therapeutic procedures.

Glu-Glu tag Antibody - Protein Information

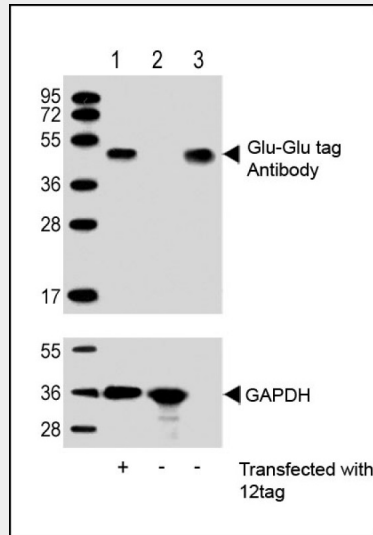
Glu-Glu tag Antibody - Protocols

Provided below are standard protocols that you may find useful for product applications.

- [Western Blot](#)
- [Blocking Peptides](#)
- [Dot Blot](#)
- [Immunohistochemistry](#)
- [Immunofluorescence](#)
- [Immunoprecipitation](#)

- [Flow Cytometry](#)
- [Cell Culture](#)

Glu-Glu tag Antibody - Images



All lanes : Anti-Glu-Glu tag Antibody at 1:1000 dilution (upper) or GAPDH (lower) Lane 1: 293T/17 transfected with 12tag lysate (10ug) Lane 2: Non-transfected 293T/17 lysate (10ug) Lane 3: 12tag recombinant protein lysate (0. 1ug) Secondary Goat Anti-Rabbit IgG, (H+L), Peroxidase conjugated at 1/10000 dilution. Predicted band size : 42 kDa Blocking/Dilution buffer: 5% NFDN/TBST.