

**HSV tag Antibody**  
**Purified Rabbit Polyclonal Antibody (Pab)**  
**Catalog # AW5658**

**Specification**

---

**HSV tag Antibody - Product Information**

Application	WB,E
Primary Accession	<a href="#">NA</a>
Host	Rabbit
Clonality	Polyclonal
Calculated MW	42 KDa
Isotype	Rabbit IgG
Antigen Source	HUMAN

**HSV tag Antibody - Additional Information**

**Antigen Region**

NA

**Dilution**

WB~~1:1000

**Target/Specificity**

This HSV tag antibody is generated from a rabbit immunized with a KLH conjugated synthetic peptide.

**Storage**

Maintain refrigerated at 2-8°C for up to 2 weeks. For long term storage store at -20°C in small aliquots to prevent freeze-thaw cycles.

**Precautions**

HSV tag Antibody is for research use only and not for use in diagnostic or therapeutic procedures.

**HSV tag Antibody - Protein Information**

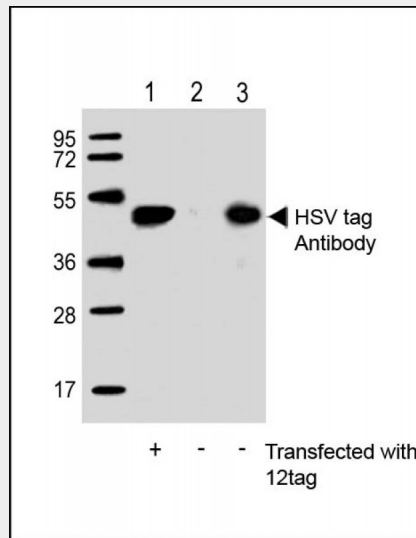
**HSV tag Antibody - Protocols**

Provided below are standard protocols that you may find useful for product applications.

- [Western Blot](#)
- [Blocking Peptides](#)
- [Dot Blot](#)
- [Immunohistochemistry](#)
- [Immunofluorescence](#)
- [Immunoprecipitation](#)
- [Flow Cytometry](#)

- [Cell Culture](#)

## HSV tag Antibody - Images



All lanes : Anti-HSV tag Antibody at 1:1000 dilution Lane 1: 293T/17 transfected with 12tag lysate (10ug) Lane 2: Non-transfected 293T/17 lysate (10ug) Lane 3: 12tag recombinant protein lysate (1ug) Secondary Goat Anti-Rabbit IgG, (H+L), Peroxidase conjugated at 1/10000 dilution. Predicted band size : 42 kDa Blocking/Dilution buffer: 5% NFDm/TBST.