

**SEMA4B Antibody (C-term)**  
**Purified Rabbit Polyclonal Antibody (Pab)**  
**Catalog # AW5642**

**Specification**

---

**SEMA4B Antibody (C-term) - Product Information**

Application	WB,E
Primary Accession	<a href="#">O9NPR2</a>
Reactivity	Human
Host	Rabbit
Clonality	Polyclonal
Calculated MW	H=92,81;M=91;[cst,RD]105 KDa
Isotype	Rabbit IgG
Antigen Source	HUMAN

**SEMA4B Antibody (C-term) - Additional Information**

**Gene ID** 10509

**Antigen Region**  
371-405

**Other Names**  
Semaphorin-4B, SEMA4B, KIAA1745, SEMAC

**Dilution**  
WB~~1:2000

**Target/Specificity**  
This SEMA4B antibody is generated from a rabbit immunized with a KLH conjugated synthetic peptide between 371-405 amino acids from the C-terminal region of human SEMA4B.

**Storage**  
Maintain refrigerated at 2-8°C for up to 2 weeks. For long term storage store at -20°C in small aliquots to prevent freeze-thaw cycles.

**Precautions**  
SEMA4B Antibody (C-term) is for research use only and not for use in diagnostic or therapeutic procedures.

**SEMA4B Antibody (C-term) - Protein Information**

**Name** SEMA4B ([HGNC:10730](#))

**Function**  
Inhibits axonal extension by providing local signals to specify territories inaccessible for growing axons.

### Cellular Location

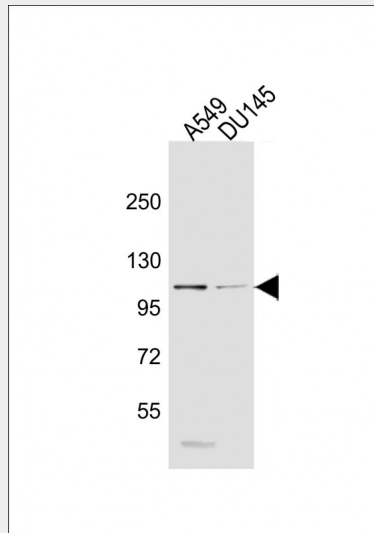
Membrane; Single-pass type I membrane protein.

### SEMA4B Antibody (C-term) - Protocols

Provided below are standard protocols that you may find useful for product applications.

- [Western Blot](#)
- [Blocking Peptides](#)
- [Dot Blot](#)
- [Immunohistochemistry](#)
- [Immunofluorescence](#)
- [Immunoprecipitation](#)
- [Flow Cytometry](#)
- [Cell Culture](#)

### SEMA4B Antibody (C-term) - Images



All lanes : Anti-SEMA4B Antibody (C-term) at 1:2000 dilution Lane 1: A549 whole cell lysate Lane 2: DU145 whole cell lysate Lysates/proteins at 20 µg per lane. Secondary Goat Anti-Rabbit IgG, (H+L), Peroxidase conjugated at 1/10000 dilution. Predicted band size : 92 kDa Blocking/Dilution buffer: 5% NFDM/TBST.

### SEMA4B Antibody (C-term) - Background

Inhibits axonal extension by providing local signals to specify territories inaccessible for growing axons.

### SEMA4B Antibody (C-term) - References

- White J.R., et al. Submitted (OCT-2003) to the EMBL/GenBank/DDBJ databases.  
Nagase T., et al. DNA Res. 7:347-355(2000).  
Clark H.F., et al. Genome Res. 13:2265-2270(2003).  
Zody M.C., et al. Nature 440:671-675(2006).  
Zhang Z., et al. Protein Sci. 13:2819-2824(2004).