

UQCRFS1P1 Antibody (Center)
Purified Rabbit Polyclonal Antibody (Pab)
Catalog # AW5627**Specification**

UQCRFS1P1 Antibody (Center) - Product Information

Application	WB,E
Primary Accession	POC7P4
Other Accession	Q69BK4 , P47985
Reactivity	Human
Predicted	Monkey
Host	Rabbit
Clonality	Polyclonal
Calculated MW	H=31;H=30[P47985] KDa
Isotype	Rabbit IgG
Antigen Source	HUMAN

UQCRFS1P1 Antibody (Center) - Additional Information**Antigen Region**

71-104

Other Names

Putative cytochrome b-c1 complex subunit Rieske-like protein 1, Ubiquinol-cytochrome c reductase Rieske iron-sulfur subunit pseudogene 1, UQCRFS1P1, UQCRFSL1

Dilution

WB~~1:2000

Target/Specificity

This UQCRFS1P1 antibody is generated from a rabbit immunized with a KLH conjugated synthetic peptide between 71-104 amino acids from the Central region of human UQCRFS1P1.

Storage

Maintain refrigerated at 2-8°C for up to 2 weeks. For long term storage store at -20°C in small aliquots to prevent freeze-thaw cycles.

Precautions

UQCRFS1P1 Antibody (Center) is for research use only and not for use in diagnostic or therapeutic procedures.

UQCRFS1P1 Antibody (Center) - Protein Information**Name** UQCRFS1P1**Synonyms** UQCRFSL1**Cellular Location**

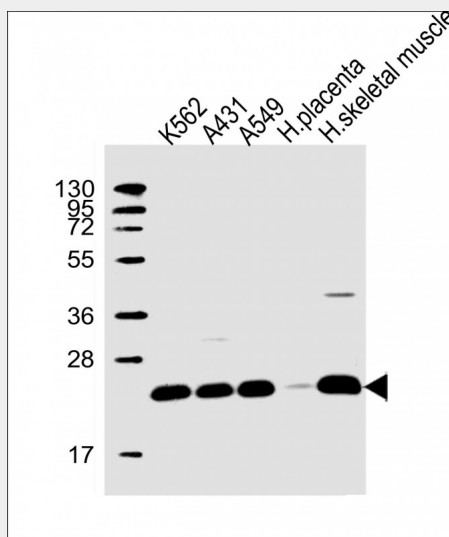
Membrane; Single-pass membrane protein

UQCRFS1P1 Antibody (Center) - Protocols

Provided below are standard protocols that you may find useful for product applications.

- [Western Blot](#)
- [Blocking Peptides](#)
- [Dot Blot](#)
- [Immunohistochemistry](#)
- [Immunofluorescence](#)
- [Immunoprecipitation](#)
- [Flow Cytometry](#)
- [Cell Culture](#)

UQCRFS1P1 Antibody (Center) - Images



All lanes : Anti-UQCRFS1P1 Antibody (Center) at 1:2000 dilution Lane 1: K562 whole cell lysate Lane 2: A431 whole cell lysate Lane 3: A549 whole cell lysate Lane 4: human placenta lysate Lane 5: human skeletal muscle lysate Lysates/proteins at 20 µg per lane. Secondary Goat Anti-Rabbit IgG, (H+L), Peroxidase conjugated at 1/10000 dilution. Predicted band size : 31 kDa Blocking/Dilution buffer: 5% NFDM/TBST.

UQCRFS1P1 Antibody (Center) - References

- Dunham I.,et al.Nature 402:489-495(1999).
Li W.B.,et al.Submitted (JUL-2004) to the EMBL/GenBank/DDBJ databases.