

RAE1 Antibody (Center)
Purified Rabbit Polyclonal Antibody (Pab)
Catalog # AW5624

Specification

RAE1 Antibody (Center) - Product Information

Application	WB,E
Primary Accession	P78406
Other Accession	Q5E9A4 , Q4R6D2 , Q8C570 , Q3SWS8 , A5GFN6 , Q5RF99
Reactivity	Human, Mouse
Predicted	Bovine, Monkey, Rat, Pig
Host	Rabbit
Clonality	Polyclonal
Calculated MW	H=41;M=41;R=41 KDa
Isotype	Rabbit IgG
Antigen Source	HUMAN

RAE1 Antibody (Center) - Additional Information

Gene ID 8480

Antigen Region
128-162

Other Names
mRNA export factor, Rae1 protein homolog, mRNA-associated protein mrnp 41, RAE1, MRNP41

Dilution
WB~~1:2000

Target/Specificity
This RAE1 antibody is generated from a rabbit immunized with a KLH conjugated synthetic peptide between 128-162 amino acids from the Central region of human RAE1.

Storage
Maintain refrigerated at 2-8°C for up to 2 weeks. For long term storage store at -20°C in small aliquots to prevent freeze-thaw cycles.

Precautions
RAE1 Antibody (Center) is for research use only and not for use in diagnostic or therapeutic procedures.

RAE1 Antibody (Center) - Protein Information

Name RAE1

Synonyms MRNP41

Function

Acts as a mRNA export factor involved in nucleocytoplasmic transport (PubMed:20498086, PubMed:33849972). Plays a role in mitotic bipolar spindle formation (PubMed:17172455). May function in attaching cytoplasmic mRNPs to the cytoskeleton both directly or indirectly (PubMed:17172455).

Cellular Location

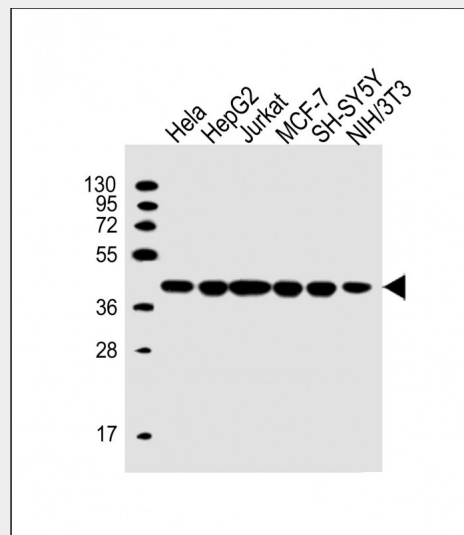
Cytoplasm. Nucleus. Cytoplasm, cytoskeleton, spindle pole. Nucleus envelope. Note=Recruited from interphase nuclei to spindle MTs during mitosis.

RAE1 Antibody (Center) - Protocols

Provided below are standard protocols that you may find useful for product applications.

- [Western Blot](#)
- [Blocking Peptides](#)
- [Dot Blot](#)
- [Immunohistochemistry](#)
- [Immunofluorescence](#)
- [Immunoprecipitation](#)
- [Flow Cytometry](#)
- [Cell Culture](#)

RAE1 Antibody (Center) - Images



All lanes : Anti-RAE1 Antibody (Center) at 1:2000 dilution Lane 1: HeLa whole cell lysate Lane 2: HepG2 whole cell lysate Lane 3: Jurkat whole cell lysate Lane 4: MCF-7 whole cell lysate Lane 5: SH-SY5Y whole cell lysate Lane 6: NIH/3T3 whole cell lysate Lysates/proteins at 20 µg per lane. Secondary Goat Anti-Rabbit IgG, (H+L), Peroxidase conjugated at 1/10000 dilution. Predicted band size : 41 kDa Blocking/Dilution buffer: 5% NFDN/TBST.

RAE1 Antibody (Center) - Background

Binds mRNA. May function in nucleocytoplasmic transport and in directly or indirectly attaching

cytoplasmic mRNPs to the cytoskeleton.

RAE1 Antibody (Center) - References

- Bharathi A., et al. Gene 198:251-258(1997).
Kraemer D.M., et al. Proc. Natl. Acad. Sci. U.S.A. 94:9119-9124(1997).
Lu L., et al. Submitted (JUL-2003) to the EMBL/GenBank/DDBJ databases.
Ota T., et al. Nat. Genet. 36:40-45(2004).
Deloukas P., et al. Nature 414:865-871(2001).