

**ETV1 Antibody (C-Term)**  
**Purified Rabbit Polyclonal Antibody (Pab)**  
**Catalog # AW5611**

**Specification**

---

**ETV1 Antibody (C-Term) - Product Information**

Application	WB,E
Primary Accession	<a href="#">P50549</a>
Other Accession	<a href="#">Q2KIC2</a> , <a href="#">P41164</a>
Reactivity	Human, Mouse
Predicted	Bovine
Host	Rabbit
Clonality	Polyclonal
Calculated MW	H=55,53,52,43,48,50;M=55 KDa
Isotype	Rabbit IgG
Antigen Source	HUMAN

**ETV1 Antibody (C-Term) - Additional Information**

**Gene ID** 2115

**Antigen Region**  
434-465

**Other Names**  
ETS translocation variant 1, Ets-related protein 81, ETV1, ER81

**Dilution**  
WB~~0.25

**Target/Specificity**  
This ETV1 antibody is generated from a rabbit immunized with a KLH conjugated synthetic peptide between 434-465 amino acids from human ETV1.

**Storage**  
Maintain refrigerated at 2-8°C for up to 2 weeks. For long term storage store at -20°C in small aliquots to prevent freeze-thaw cycles.

**Precautions**  
ETV1 Antibody (C-Term) is for research use only and not for use in diagnostic or therapeutic procedures.

**ETV1 Antibody (C-Term) - Protein Information**

**Name** ETV1 ([HGNC:3490](#))

**Function**  
Transcriptional activator that binds to DNA sequences containing the consensus pentanucleotide

5'-CGGA[AT]-3' (PubMed:<a href="http://www.uniprot.org/citations/7651741" target="\_blank">7651741</a>). Required for olfactory dopaminergic neuron differentiation; may directly activate expression of tyrosine hydroxylase (TH) (By similarity).

#### Cellular Location

Nucleus {ECO:0000255|PROSITE-ProRule:PRU00237}.

#### Tissue Location

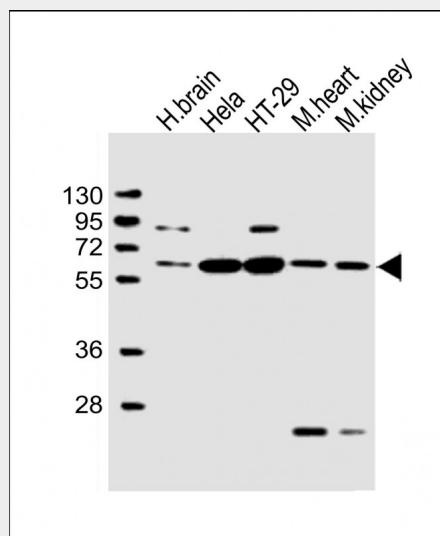
Very highly expressed in brain, highly expressed in testis, lung and heart, moderately in spleen, small intestine, pancreas and colon, weakly in liver, prostate and thymus, very weakly in skeletal muscle, kidney and ovary and not in placenta and peripheral blood leukocytes.

### ETV1 Antibody (C-Term) - Protocols

Provided below are standard protocols that you may find useful for product applications.

- [Western Blot](#)
- [Blocking Peptides](#)
- [Dot Blot](#)
- [Immunohistochemistry](#)
- [Immunofluorescence](#)
- [Immunoprecipitation](#)
- [Flow Cytometry](#)
- [Cell Culture](#)

### ETV1 Antibody (C-Term) - Images



All lanes : Anti-ETV1 Antibody (C-Term) at 1:2000 dilution Lane 1: human brain lysate Lane 2: HeLa whole cell lysate Lane 3: HT-29 whole cell lysate Lane 4: mouse heart lysate Lane 5: mouse kidney lysate Lysates/proteins at 20 µg per lane. Secondary Goat Anti-Rabbit IgG, (H+L), Peroxidase conjugated at 1/10000 dilution. Predicted band size : 55 kDa Blocking/Dilution buffer: 5% NFDM/TBST.

### ETV1 Antibody (C-Term) - Background

Transcriptional activator that binds to DNA sequences containing the consensus pentanucleotide 5'-CGGA[AT]-3'.

**ETV1 Antibody (C-Term) - References**

Jeon I.-S., et al. Oncogene 10:1229-1234(1995).

Monte D., et al. Oncogene 11:771-779(1995).

Coutte L., et al. Submitted (NOV-1998) to the EMBL/GenBank/DDBJ databases.

Ota T., et al. Nat. Genet. 36:40-45(2004).

Totoki Y., et al. Submitted (MAR-2005) to the EMBL/GenBank/DDBJ databases.