

AMMECR1 Antibody (C-term)
Affinity Purified Rabbit Polyclonal Antibody (Pab)
Catalog # AW5605

Specification

AMMECR1 Antibody (C-term) - Product Information

Application	WB,E
Primary Accession	O9Y4X0
Other Accession	O9JHT5 , Q5RAS7
Reactivity	Human
Predicted	Dog
Host	Rabbit
Clonality	Polyclonal
Calculated MW	H=35,31,25;M=36 KDa
Isotype	Rabbit IgG
Antigen Source	HUMAN

AMMECR1 Antibody (C-term) - Additional Information

Gene ID 9949

Antigen Region
271-298

Other Names
AMME syndrome candidate gene 1 protein, AMMECR1

Dilution
WB~~1:2000

Target/Specificity
This AMMECR1 antibody is generated from rabbits immunized with a KLH conjugated synthetic peptide between 271-298 amino acids from the C-terminal region of human AMMECR1.

Storage
Maintain refrigerated at 2-8°C for up to 2 weeks. For long term storage store at -20°C in small aliquots to prevent freeze-thaw cycles.

Precautions
AMMECR1 Antibody (C-term) is for research use only and not for use in diagnostic or therapeutic procedures.

AMMECR1 Antibody (C-term) - Protein Information

Name AMMECR1

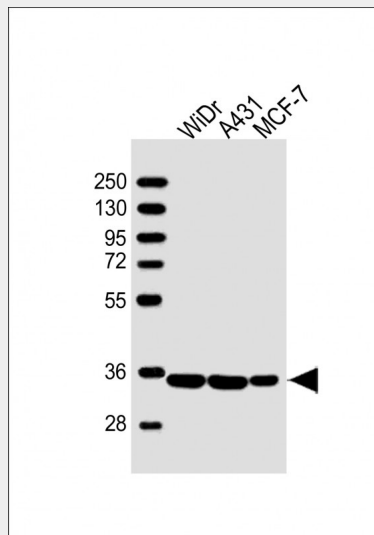
Cellular Location
Nucleus.

AMMECR1 Antibody (C-term) - Protocols

Provided below are standard protocols that you may find useful for product applications.

- [Western Blot](#)
- [Blocking Peptides](#)
- [Dot Blot](#)
- [Immunohistochemistry](#)
- [Immunofluorescence](#)
- [Immunoprecipitation](#)
- [Flow Cytometry](#)
- [Cell Culture](#)

AMMECR1 Antibody (C-term) - Images



All lanes : Anti-AMMECR1 Antibody (C-term) at 1:2000 dilution Lane 1: WiDr whole cell lysate Lane 2: A431 whole cell lysate Lane 3: MCF-7 whole cell lysate Lysates/proteins at 20 µg per lane. Secondary Goat Anti-Rabbit IgG, (H+L), Peroxidase conjugated at 1/10000 dilution. Predicted band size : 35 kDa Blocking/Dilution buffer: 5% NFD/MTBST.

AMMECR1 Antibody (C-term) - Background

The exact function of this gene is not known, however, submicroscopic deletion of the X chromosome including this gene, COL4A5, and FAHL4 genes, result in a contiguous gene deletion syndrome, the AMME complex (Alport syndrome, mental retardation, midface hypoplasia, and elliptocytosis). Alternatively spliced transcript variants encoding different isoforms have been found for this gene.

AMMECR1 Antibody (C-term) - References

- Lamesch, P., et al. *Genomics* 89(3):307-315(2007)
Ross, M.T., et al. *Nature* 434(7031):325-337(2005)
Tajika, Y., et al. *Proteins* 58(2):501-503(2005)
Vitelli, F., et al. *Genomics* 55(3):335-340(1999)
Piccini, M., et al. *Genomics* 47(3):350-358(1998)