

HFE2 Antibody (Center)
Affinity Purified Rabbit Polyclonal Antibody (Pab)
Catalog # AW5578

Specification

HFE2 Antibody (Center) - Product Information

Application	WB, IHC-P,E
Primary Accession	Q6ZVN8
Reactivity	Human
Host	Rabbit
Clonality	Polyclonal
Calculated MW	H=45,34;M=45;R=45 KDa
Isotype	Rabbit IgG
Antigen Source	HUMAN

HFE2 Antibody (Center) - Additional Information

Gene ID 148738

Antigen Region
134-162

Other Names

Hemojuvelin, Hemochromatosis type 2 protein, RGM domain family member C, HFE2, HJV, RGMC

Dilution

WB~~1:1000
IHC-P~~1:50~100

Target/Specificity

This HFE2 antibody is generated from rabbits immunized with a KLH conjugated synthetic peptide between 134-162 amino acids from the Central region of human HFE2.

Storage

Maintain refrigerated at 2-8°C for up to 2 weeks. For long term storage store at -20°C in small aliquots to prevent freeze-thaw cycles.

Precautions

HFE2 Antibody (Center) is for research use only and not for use in diagnostic or therapeutic procedures.

HFE2 Antibody (Center) - Protein Information

Name HJV ([HGNC:4887](#))

Synonyms HFE2, RGMC

Function

Acts as a bone morphogenetic protein (BMP) coreceptor (PubMed:18976966). Through enhancement of BMP signaling regulates hepcidin (HAMP) expression and regulates iron homeostasis (PubMed:18976966).

Cellular Location

Cell membrane; Lipid-anchor, GPI- anchor. Note=Also released in the extracellular space

Tissue Location

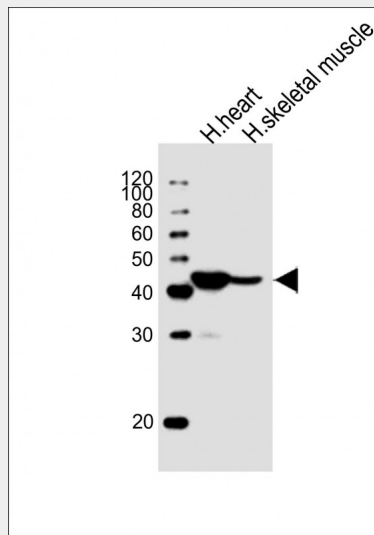
Adult and fetal liver, heart, and skeletal muscle.

HFE2 Antibody (Center) - Protocols

Provided below are standard protocols that you may find useful for product applications.

- [Western Blot](#)
- [Blocking Peptides](#)
- [Dot Blot](#)
- [Immunohistochemistry](#)
- [Immunofluorescence](#)
- [Immunoprecipitation](#)
- [Flow Cytometry](#)
- [Cell Culture](#)

HFE2 Antibody (Center) - Images



All lanes : Anti-HFE2 Antibody (Center) at 1:1000 dilution Lane 1: human heart lysate Lane 2: human skeletal muscle lysate Lysates/proteins at 20 µg per lane. Secondary Goat Anti-Rabbit IgG, (H+L), Peroxidase conjugated at 1/10000 dilution. Predicted band size : 45 kDa Blocking/Dilution buffer: 5% NFDM/TBST.



HFE2 Antibody (Center) (Cat. #AW5578) IHC analysis in formalin fixed and paraffin embedded skeletal muscle followed by peroxidase conjugation of the secondary antibody and DAB staining. This data demonstrates the use of the HFE2 Antibody (Center) for immunohistochemistry. Clinical relevance has not been evaluated.

HFE2 Antibody (Center) - Background

HFE2 is involved in iron metabolism. It may be a component of the signaling pathway which activates hepcidin or it may act as a modulator of hepcidin expression. It could also represent the cellular receptor for hepcidin.

HFE2 Antibody (Center) - References

- Zhu, X., et al. Genet. Epidemiol. 34(2):171-187(2010)
- Barton, J.C., et al. Am. J. Hematol. 84(11):710-714(2009)
- Zhang, A.S., et al. J. Biol. Chem. 284(34):22580-22589(2009)