

SNX1 Antibody (C-term)
Affinity Purified Rabbit Polyclonal Antibody (Pab)
Catalog # AW5577**Specification**

SNX1 Antibody (C-term) - Product Information

Application	WB,E
Primary Accession	Q13596
Other Accession	Q4R503 , Q5RFP8
Reactivity	Human
Host	Rabbit
Clonality	Polyclonal
Calculated MW	H=59,52,63;M=59;R=59 KDa
Isotype	Rabbit IgG
Antigen Source	HUMAN

SNX1 Antibody (C-term) - Additional Information**Gene ID** 6642**Antigen Region**
426-455**Other Names**
Sorting nexin-1, SNX1**Dilution**
WB~~1:1000**Target/Specificity**
This SNX1 antibody is generated from rabbits immunized with a KLH conjugated synthetic peptide between 426-455 amino acids from the C-terminal region of human SNX1.**Storage**
Maintain refrigerated at 2-8°C for up to 2 weeks. For long term storage store at -20°C in small aliquots to prevent freeze-thaw cycles.**Precautions**
SNX1 Antibody (C-term) is for research use only and not for use in diagnostic or therapeutic procedures.**SNX1 Antibody (C-term) - Protein Information****Name** SNX1**Function**
Involved in several stages of intracellular trafficking. Interacts with membranes containing phosphatidylinositol 3-phosphate (PtdIns(3P)) or phosphatidylinositol 3,5-bisphosphate

(PtdIns(3,5)P₂) (PubMed:12198132). Acts in part as component of the retromer membrane-deforming SNX-BAR subcomplex. The SNX-BAR retromer mediates retrograde transport of cargo proteins from endosomes to the trans-Golgi network (TGN) and is involved in endosome-to-plasma membrane transport for cargo protein recycling. The SNX-BAR subcomplex functions to deform the donor membrane into a tubular profile called endosome-to-TGN transport carrier (ETC) (Probable). Can sense membrane curvature and has in vitro vesicle-to-membrane remodeling activity (PubMed:19816406, PubMed:23085988). Involved in retrograde endosome-to-TGN transport of lysosomal enzyme receptors (IGF2R, M6PR and SORT1) and Shigella dysenteriae toxin stxB. Plays a role in targeting ligand-activated EGFR to the lysosomes for degradation after endocytosis from the cell surface and release from the Golgi (PubMed:12198132, PubMed:15498486, PubMed:17101778, PubMed:17550970, PubMed:18088323, PubMed:21040701). Involvement in retromer-independent endocytic trafficking of P2RY1 and lysosomal degradation of protease-activated receptor-1/F2R (PubMed:16407403, PubMed:20070609). Promotes KALRN- and RHOG-dependent but retromer-independent membrane remodeling such as lamellipodium formation; the function is dependent on GEF activity of KALRN (PubMed:20604901). Required for endocytosis of DRD5 upon agonist stimulation but not for basal receptor trafficking (PubMed:23152498).

Cellular Location

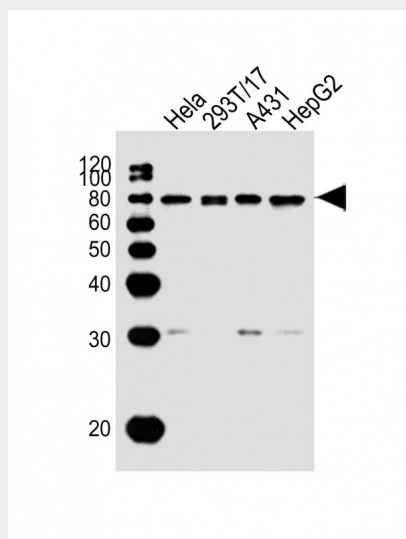
Endosome membrane; Peripheral membrane protein; Cytoplasmic side. Golgi apparatus, trans-Golgi network membrane; Peripheral membrane protein; Cytoplasmic side. Early endosome membrane; Peripheral membrane protein; Cytoplasmic side. Cell projection, lamellipodium. Note=Enriched on tubular elements of the early endosome membrane. Binds preferentially to highly curved membranes enriched in phosphatidylinositol 3-phosphate (PtdIns(3P)) or phosphatidylinositol 3,5-bisphosphate (PtdIns(3,5)P₂) (PubMed:15498486). Colocalized with SORT1 to tubular endosomal membrane structures called endosome-to-TGN transport carriers (ETCs) which are budding from early endosome vacuoles just before maturing into late endosome vacuoles (PubMed:18088323). Colocalizes with DNAJC13 and Shigella dysenteriae toxin stxB on early endosomes (PubMed:19874558) Colocalized with F-actin at the leading edge of lamellipodia in a KALRN-dependent manner (PubMed:20604901).

SNX1 Antibody (C-term) - Protocols

Provided below are standard protocols that you may find useful for product applications.

- [Western Blot](#)
- [Blocking Peptides](#)
- [Dot Blot](#)
- [Immunohistochemistry](#)
- [Immunofluorescence](#)
- [Immunoprecipitation](#)
- [Flow Cytometry](#)
- [Cell Culture](#)

SNX1 Antibody (C-term) - Images



All lanes : Anti-SNX1 Antibody (C-term) at 1:1000 dilution Lane 1: Hela whole cell lysate Lane 2: 293T/17 whole cell lysate Lane 3: A431 whole cell lysate Lane 4: HepG2 whole cell lysate Lysates/proteins at 20 µg per lane. Secondary Goat Anti-Rabbit IgG, (H+L), Peroxidase conjugated at 1/10000 dilution. Predicted band size : 59 kDa Blocking/Dilution buffer: 5% NFDM/TBST.

SNX1 Antibody (C-term) - Background

This gene encodes a member of the sorting nexin family. Members of this family contain a phox (PX) domain, which is a phosphoinositide binding domain, and are involved in intracellular trafficking. This endosomal protein regulates the cell-surface expression of epidermal growth factor receptor. This protein also has a role in sorting protease-activated receptor-1 from early endosomes to lysosomes. This protein may form oligomeric complexes with family members. This gene results in three transcript variants encoding distinct isoforms.

SNX1 Antibody (C-term) - References

Nisar, S., et al. Traffic 11(4):508-519(2010)
Mari, M., et al. Traffic 9(3):380-393(2008)
Bryant, D.M., et al. J. Cell. Sci. 120 (PT 10), 1818-1828 (2007) :
Rojas, R., et al. Mol. Cell. Biol. 27(3):1112-1124(2007)
Nguyen, L.N., et al. Clin. Cancer Res. 12(23):6952-6959(2006)