

TUBB2A Antibody (C-term)
Affinity Purified Rabbit Polyclonal Antibody (Pab)
Catalog # AW5576

Specification

TUBB2A Antibody (C-term) - Product Information

Application	WB,E
Primary Accession	Q13885
Other Accession	P09203 , Q4R5B3 , Q7TMM9 , P85108 , Q6B856 , Q9BVA1 , Q9CWF2 , Q3KRE8 , P32882 , P13602 , P02554
Reactivity	Human
Predicted	Chicken, Monkey, Mouse, Rat, Bovine, Xenopus, Pig
Host	Rabbit
Clonality	Polyclonal
Calculated MW	H=50;M=50;R=50 KDa
Isotype	Rabbit IgG
Antigen Source	HUMAN

TUBB2A Antibody (C-term) - Additional Information

Gene ID 7280

Antigen Region
410-438

Other Names
Tubulin beta-2A chain, Tubulin beta class IIa, TUBB2A, TUBB2

Dilution
WB~~1:1000

Target/Specificity
This TUBB2A antibody is generated from rabbits immunized with a KLH conjugated synthetic peptide between 410-438 amino acids from the C-terminal region of human TUBB2A.

Storage
Maintain refrigerated at 2-8°C for up to 2 weeks. For long term storage store at -20°C in small aliquots to prevent freeze-thaw cycles.

Precautions
TUBB2A Antibody (C-term) is for research use only and not for use in diagnostic or therapeutic procedures.

TUBB2A Antibody (C-term) - Protein Information

Name TUBB2A

Synonyms TUBB2

Function

Tubulin is the major constituent of microtubules, a cylinder consisting of laterally associated linear protofilaments composed of alpha- and beta-tubulin heterodimers. Microtubules grow by the addition of GTP-tubulin dimers to the microtubule end, where a stabilizing cap forms. Below the cap, tubulin dimers are in GDP-bound state, owing to GTPase activity of alpha-tubulin.

Cellular Location

Cytoplasm, cytoskeleton.

Tissue Location

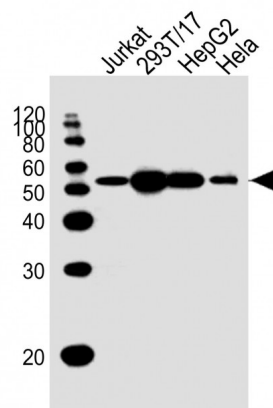
High expression in brain, where it represents 30% of all beta-tubulins.

TUBB2A Antibody (C-term) - Protocols

Provided below are standard protocols that you may find useful for product applications.

- [Western Blot](#)
- [Blocking Peptides](#)
- [Dot Blot](#)
- [Immunohistochemistry](#)
- [Immunofluorescence](#)
- [Immunoprecipitation](#)
- [Flow Cytometry](#)
- [Cell Culture](#)

TUBB2A Antibody (C-term) - Images



All lanes : Anti-TUBB2A Antibody (C-term) at 1:1000 dilution Lane 1: Jurkat whole cell lysate Lane 2: 293T/17 whole cell lysate Lane 3: HepG2 whole cell lysate Lane 4: HeLa whole cell lysate Lysates/proteins at 20 µg per lane. Secondary Goat Anti-Rabbit IgG, (H+L), Peroxidase conjugated at 1/10000 dilution. Predicted band size : 50 kDa Blocking/Dilution buffer: 5% NFDM/TBST.

TUBB2A Antibody (C-term) - Background

Tubulin is the major constituent of microtubules. It binds two moles of GTP, one at an

exchangeable site on the beta chain and one at a non-exchangeable site on the alpha-chain (By similarity).

TUBB2A Antibody (C-term) - References

Martins-de-Souza, D., et al. J Psychiatr Res 44(14):989-991(2010)

Frum, R., et al. J. Proteome Res. 6(4):1410-1417(2007)

Yeh, T.S., et al. Cancer Res. 64(22):8334-8340(2004)

Okai, T., et al. J. Cell. Sci. 117 (PT 20), 4705-4715 (2004) :

Jin, J., et al. Curr. Biol. 14(16):1436-1450(2004)