

CMA1 Antibody (N-Term)
Purified Rabbit Polyclonal Antibody (Pab)
Catalog # AW5573

Specification

CMA1 Antibody (N-Term) - Product Information

Application	WB,E
Primary Accession	P23946
Reactivity	Human
Host	Rabbit
Clonality	Polyclonal
Calculated MW	H=27,15;M=28;R=28 KDa
Isotype	Rabbit IgG
Antigen Source	HUMAN

CMA1 Antibody (N-Term) - Additional Information

Gene ID 1215

Antigen Region
84-118

Other Names
Chymase, Alpha-chymase, Mast cell protease I, CMA1, CYH, CYM

Dilution
WB~~1:2000

Target/Specificity
This CMA1 antibody is generated from a rabbit immunized with a KLH conjugated synthetic peptide between 84-118 amino acids from human CMA1.

Storage
Maintain refrigerated at 2-8°C for up to 2 weeks. For long term storage store at -20°C in small aliquots to prevent freeze-thaw cycles.

Precautions
CMA1 Antibody (N-Term) is for research use only and not for use in diagnostic or therapeutic procedures.

CMA1 Antibody (N-Term) - Protein Information

Name CMA1

Synonyms CYH, CYM

Function
Major secreted protease of mast cells with suspected roles in vasoactive peptide generation,

extracellular matrix degradation, and regulation of gland secretion.

Cellular Location

Secreted. Cytoplasmic granule. Note=Mast cell granules

Tissue Location

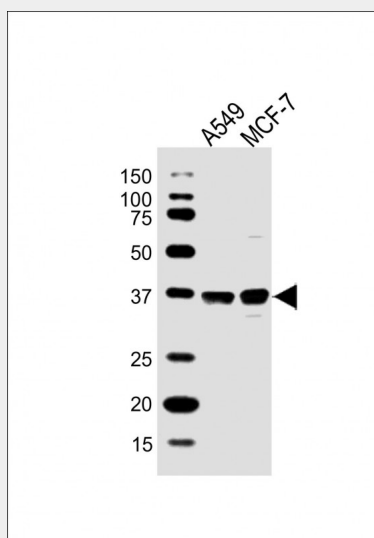
Mast cells in lung, heart, skin and placenta. Expressed in both normal skin and in urticaria pigmentosa lesions

CMA1 Antibody (N-Term) - Protocols

Provided below are standard protocols that you may find useful for product applications.

- [Western Blot](#)
- [Blocking Peptides](#)
- [Dot Blot](#)
- [Immunohistochemistry](#)
- [Immunofluorescence](#)
- [Immunoprecipitation](#)
- [Flow Cytometry](#)
- [Cell Culture](#)

CMA1 Antibody (N-Term) - Images



All lanes : Anti-CMA1 Antibody (N-Term) at 1:2000 dilution Lane 1: A549 whole cell lysate Lane 2: MCF-7 whole cell lysate Lysates/proteins at 20 µg per lane. Secondary Goat Anti-Rabbit IgG, (H+L), Peroxidase conjugated at 1/10000 dilution. Predicted band size : 27 kDa Blocking/Dilution buffer: 5% NFDM/TBST.

CMA1 Antibody (N-Term) - Background

Major secreted protease of mast cells with suspected roles in vasoactive peptide generation, extracellular matrix degradation, and regulation of gland secretion.

CMA1 Antibody (N-Term) - References

Caughey G.H., et al. J. Biol. Chem. 266:12956-12963(1991).

Urata H.,et al.J. Biol. Chem. 266:17173-17179(1991).
Schechter N.M.,et al.J. Immunol. 152:4062-4069(1994).
Goshima N.,et al.Nat. Methods 5:1011-1017(2008).
Heilig R.,et al.Nature 421:601-607(2003).