

HPN Antibody (Center)
Purified Rabbit Polyclonal Antibody (Pab)
Catalog # AW5568

Specification

HPN Antibody (Center) - Product Information

Application	WB,E
Primary Accession	P05981
Other Accession	Q5R5E8
Reactivity	Human
Host	Rabbit
Clonality	Polyclonal
Calculated MW	H=45;M=47,45;R=45 KDa
Isotype	Rabbit IgG
Antigen Source	HUMAN

HPN Antibody (Center) - Additional Information

Gene ID 3249

Antigen Region
153-188

Other Names

Serine protease hepsin, Transmembrane protease serine 1, Serine protease hepsin non-catalytic chain, Serine protease hepsin catalytic chain, HPN, TMPRSS1

Dilution

WB~~1:2000

Target/Specificity

This HPN antibody is generated from a rabbit immunized with a KLH conjugated synthetic peptide between 153-188 amino acids from the Central region of human HPN.

Storage

Maintain refrigerated at 2-8°C for up to 2 weeks. For long term storage store at -20°C in small aliquots to prevent freeze-thaw cycles.

Precautions

HPN Antibody (Center) is for research use only and not for use in diagnostic or therapeutic procedures.

HPN Antibody (Center) - Protein Information

Name HPN

Synonyms TMPRSS1

Function

Serine protease that cleaves extracellular substrates, and contributes to the proteolytic processing of growth factors, such as HGF and MST1/HGFL (PubMed:15839837, PubMed:21875933). Plays a role in cell growth and maintenance of cell morphology (PubMed:21875933, PubMed:8346233). Plays a role in the proteolytic processing of ACE2 (PubMed:24227843). Mediates the proteolytic cleavage of urinary UMOD that is required for UMOD polymerization (PubMed:26673890).

Cellular Location

Cell membrane; Single-pass type II membrane protein Apical cell membrane; Single-pass type II membrane protein

Tissue Location

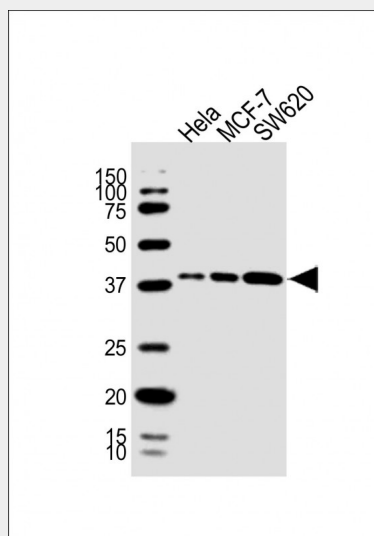
Detected in liver and kidney.

HPN Antibody (Center) - Protocols

Provided below are standard protocols that you may find useful for product applications.

- [Western Blot](#)
- [Blocking Peptides](#)
- [Dot Blot](#)
- [Immunohistochemistry](#)
- [Immunofluorescence](#)
- [Immunoprecipitation](#)
- [Flow Cytometry](#)
- [Cell Culture](#)

HPN Antibody (Center) - Images



All lanes : Anti-HPN Antibody (Center) at 1:2000 dilution Lane 1: HeLa whole cell lysate Lane 2: MCF-7 whole cell lysate Lane 3: SW620 whole cell lysate Lysates/proteins at 20 µg per lane.

Secondary Goat Anti-Rabbit IgG, (H+L), Peroxidase conjugated at 1/10000 dilution. Predicted band size : 45 kDa Blocking/Dilution buffer: 5% NFDM/TBST.

HPN Antibody (Center) - Background

Plays an essential role in cell growth and maintenance of cell morphology. May mediate the activating cleavage of HGF and MST1/HGFL. Plays a role in the proteolytic processing of ACE2.

HPN Antibody (Center) - References

- Leytus S.P., et al. *Biochemistry* 27:1067-1074(1988).
Ota T., et al. *Nat. Genet.* 36:40-45(2004).
Tsuji A., et al. *J. Biol. Chem.* 266:16948-16953(1991).
Torres-Rosado A., et al. *Proc. Natl. Acad. Sci. U.S.A.* 90:7181-7185(1993).
Chen R., et al. *J. Proteome Res.* 8:651-661(2009).