

**KCNMB2 Antibody (N-term)**  
**Purified Rabbit Polyclonal Antibody (Pab)**  
**Catalog # AW5564**

**Specification**

---

**KCNMB2 Antibody (N-term) - Product Information**

Application	WB,E
Primary Accession	<a href="#">O9Y691</a>
Other Accession	<a href="#">O9CZM9</a> , <a href="#">O81100</a>
Reactivity	Human, Mouse, Rat
Predicted	Dog, Chicken
Host	Rabbit
Clonality	Polyclonal
Calculated MW	H=27;M=27;R=27 KDa
Isotype	Rabbit IgG
Antigen Source	HUMAN

**KCNMB2 Antibody (N-term) - Additional Information**

**Gene ID** 10242

**Antigen Region**  
32-66

**Other Names**

Calcium-activated potassium channel subunit beta-2, BK channel subunit beta-2, BKbeta2, Hbeta2, Calcium-activated potassium channel, subfamily M subunit beta-2, Charybdotoxin receptor subunit beta-2, Hbeta3, K(VCA)beta-2, Maxi K channel subunit beta-2, Slo-beta-2, KCNMB2

**Dilution**

WB~~1:2000

**Target/Specificity**

This KCNMB2 antibody is generated from a rabbit immunized with a KLH conjugated synthetic peptide between 32-66 amino acids from the N-terminal region of human KCNMB2.

**Storage**

Maintain refrigerated at 2-8°C for up to 2 weeks. For long term storage store at -20°C in small aliquots to prevent freeze-thaw cycles.

**Precautions**

KCNMB2 Antibody (N-term) is for research use only and not for use in diagnostic or therapeutic procedures.

**KCNMB2 Antibody (N-term) - Protein Information**

**Name** KCNMB2

### Function

Regulatory subunit of the calcium activated potassium KCNMA1 (maxiK) channel. Modulates the calcium sensitivity and gating kinetics of KCNMA1, thereby contributing to KCNMA1 channel diversity. Acts as a negative regulator that confers rapid and complete inactivation of KCNMA1 channel complex. May participate in KCNMA1 inactivation in chromaffin cells of the adrenal gland or in hippocampal CA1 neurons.

### Cellular Location

Membrane; Multi-pass membrane protein.

### Tissue Location

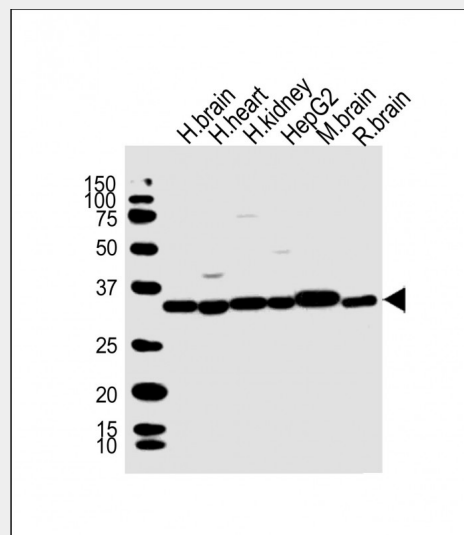
Expressed in kidney, heart and brain. Highly expressed in ovary. Expressed at low level in other tissues

## KCNMB2 Antibody (N-term) - Protocols

Provided below are standard protocols that you may find useful for product applications.

- [Western Blot](#)
- [Blocking Peptides](#)
- [Dot Blot](#)
- [Immunohistochemistry](#)
- [Immunofluorescence](#)
- [Immunoprecipitation](#)
- [Flow Cytometry](#)
- [Cell Culture](#)

## KCNMB2 Antibody (N-term) - Images



All lanes : Anti-KCNMB2 Antibody (N-term) at 1:2000 dilution Lane 1: human brain lysate Lane 2: human heart lysate Lane 3: human kidney lysate Lane 4: HepG2 whole cell lysate Lane 5: mouse brain lysate Lane 6: rat brain lysate Lysates/proteins at 20 µg per lane. Secondary Goat Anti-Rabbit IgG, (H+L), Peroxidase conjugated at 1/10000 dilution. Predicted band size : 27 kDa Blocking/Dilution buffer: 5% NFDM/TBST.

## KCNMB2 Antibody (N-term) - Background

Regulatory subunit of the calcium activated potassium KCNMA1 (maxiK) channel. Modulates the calcium sensitivity and gating kinetics of KCNMA1, thereby contributing to KCNMA1 channel diversity. Acts as a negative regulator that confers rapid and complete inactivation of KCNMA1 channel complex. May participate in KCNMA1 inactivation in chromaffin cells of the adrenal gland or in hippocampal CA1 neurons.

#### **KCNMB2 Antibody (N-term) - References**

- Wallner M.,et al.Proc. Natl. Acad. Sci. U.S.A. 96:4137-4142(1999).  
Brenner R.,et al.J. Biol. Chem. 275:6453-6461(2000).  
Xia X.-M.,et al.J. Neurosci. 19:5255-5264(1999).  
Meera P.,et al.Proc. Natl. Acad. Sci. U.S.A. 97:5562-5567(2000).  
Xia X.-M.,et al.J. Gen. Physiol. 121:125-148(2003).