

**BMI1 Antibody (C-term)**  
**Purified Rabbit Polyclonal Antibody (Pab)**  
**Catalog # AW5563**

**Specification**

---

**BMI1 Antibody (C-term) - Product Information**

Application	IF, WB,E
Primary Accession	<a href="#">P35226</a>
Reactivity	Human, Mouse
Host	Rabbit
Clonality	Polyclonal
Calculated MW	H=37;M=37 KDa
Isotype	Rabbit IgG
Antigen Source	HUMAN

**BMI1 Antibody (C-term) - Additional Information**

**Gene ID** 100532731;648

**Antigen Region**  
281-314

**Other Names**

Polycomb complex protein BMI-1, Polycomb group RING finger protein 4, RING finger protein 51, BMI1, PCGF4, RNF51

**Dilution**

IF~~1:25  
WB~~1:1000

**Target/Specificity**

This BMI1 antibody is generated from a rabbit immunized with a KLH conjugated synthetic peptide between 281-314 amino acids from the C-terminal region of human BMI1.

**Storage**

Maintain refrigerated at 2-8°C for up to 2 weeks. For long term storage store at -20°C in small aliquots to prevent freeze-thaw cycles.

**Precautions**

BMI1 Antibody (C-term) is for research use only and not for use in diagnostic or therapeutic procedures.

**BMI1 Antibody (C-term) - Protein Information**

**Name** BMI1

**Synonyms** PCGF4, RNF51

## Function

Component of a Polycomb group (PcG) multiprotein PRC1-like complex, a complex class required to maintain the transcriptionally repressive state of many genes, including Hox genes, throughout development. PcG PRC1 complex acts via chromatin remodeling and modification of histones; it mediates monoubiquitination of histone H2A 'Lys-119', rendering chromatin heritably changed in its expressibility (PubMed:<a href="http://www.uniprot.org/citations/15386022" target="\_blank">15386022</a>, PubMed:<a href="http://www.uniprot.org/citations/16359901" target="\_blank">16359901</a>, PubMed:<a href="http://www.uniprot.org/citations/16714294" target="\_blank">16714294</a>, PubMed:<a href="http://www.uniprot.org/citations/21772249" target="\_blank">21772249</a>, PubMed:<a href="http://www.uniprot.org/citations/25355358" target="\_blank">25355358</a>, PubMed:<a href="http://www.uniprot.org/citations/26151332" target="\_blank">26151332</a>, PubMed:<a href="http://www.uniprot.org/citations/27827373" target="\_blank">27827373</a>). The complex composed of RNF2, UB2D3 and BMI1 binds nucleosomes, and has activity only with nucleosomal histone H2A (PubMed:<a href="http://www.uniprot.org/citations/21772249" target="\_blank">21772249</a>, PubMed:<a href="http://www.uniprot.org/citations/25355358" target="\_blank">25355358</a>). In the PRC1-like complex, regulates the E3 ubiquitin-protein ligase activity of RNF2/RING2 (PubMed:<a href="http://www.uniprot.org/citations/15386022" target="\_blank">15386022</a>, PubMed:<a href="http://www.uniprot.org/citations/21772249" target="\_blank">21772249</a>, PubMed:<a href="http://www.uniprot.org/citations/26151332" target="\_blank">26151332</a>).

## Cellular Location

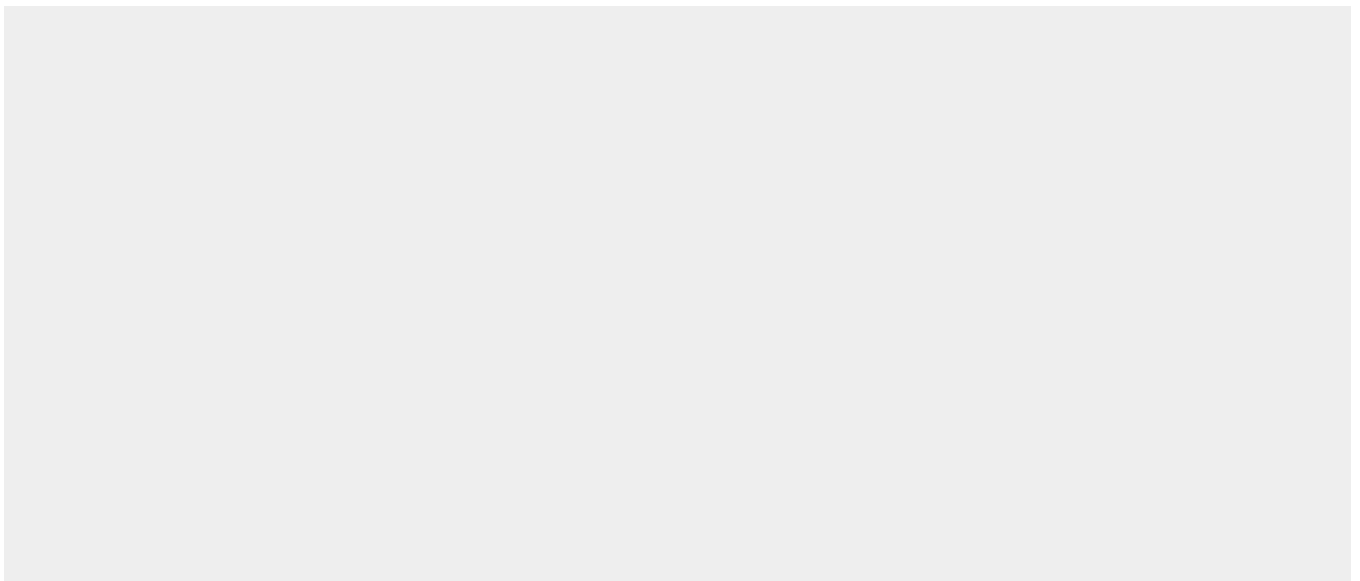
Nucleus. Cytoplasm

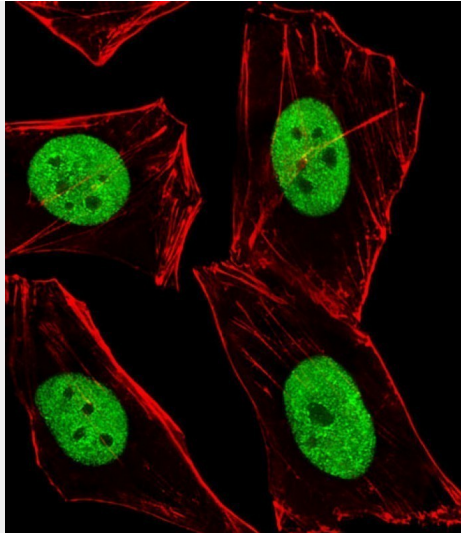
## BMI1 Antibody (C-term) - Protocols

Provided below are standard protocols that you may find useful for product applications.

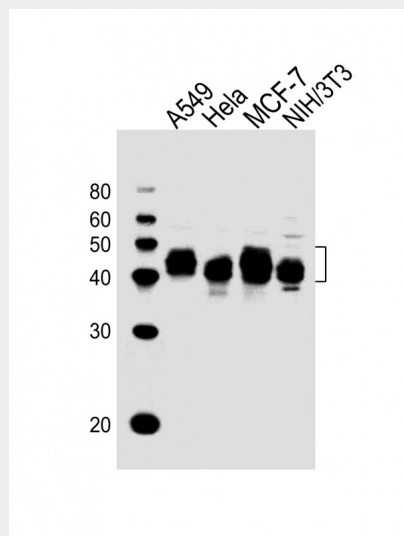
- [Western Blot](#)
- [Blocking Peptides](#)
- [Dot Blot](#)
- [Immunohistochemistry](#)
- [Immunofluorescence](#)
- [Immunoprecipitation](#)
- [Flow Cytometry](#)
- [Cell Culture](#)

## BMI1 Antibody (C-term) - Images





Immunofluorescent analysis of 4% paraformaldehyde-fixed, 0.1% Triton X-100 permeabilized HeLa (Human cervical epithelial adenocarcinoma cell line) cells labeling BMI1 with AW5563 at 1/25 dilution, followed by Alexa Fluor 488-conjugated goat anti-rabbit IgG (1583138) secondary antibody at 1/400 dilution (green). Confocal image showing nuclear staining on HeLa cell line. Cytoplasmic actin is detected with Alexa Fluor® 555 conjugated with Phalloidin (OB16636430) at 1/100 dilution (red).



All lanes : Anti-BMI1 Antibody (C-term) at 1:1000 dilution Lane 1: A549 whole cell lysates Lane 2: HeLa whole cell lysates Lane 3: MCF-7 whole cell lysates Lane 4: NIH/3T3 whole cell lysates Lysates/proteins at 20 µg per lane. Secondary Goat Anti-Rabbit IgG, (H+L), Peroxidase conjugated at 1/10000 dilution Predicted band size : 37 kDa Blocking/Dilution buffer: 5% NFDN/TBST.

### **BMI1 Antibody (C-term) - Background**

Component of a Polycomb group (PcG) multiprotein PRC1- like complex, a complex class required to maintain the transcriptionally repressive state of many genes, including Hox genes, throughout development. PcG PRC1 complex acts via chromatin remodeling and modification of histones; it mediates monoubiquitination of histone H2A 'Lys-119', rendering chromatin heritably changed in its expressibility. In the PRC1 complex, it is required to stimulate the E3 ubiquitin-protein ligase activity of RNF2/RING2.

### **BMI1 Antibody (C-term) - References**

Alkema M.J.,et al.Hum. Mol. Genet. 2:1597-1603(1993).  
Ota T.,et al.Nat. Genet. 36:40-45(2004).  
Deloukas P.,et al.Nature 429:375-381(2004).  
Mural R.J.,et al.Submitted (SEP-2005) to the EMBL/GenBank/DDBJ databases.  
Levy L.S.,et al.Oncogene 8:1833-1838(1993).