

PDHA1 Antibody
Affinity Purified Rabbit Polyclonal Antibody (Pab)
Catalog # AW5558

Specification

PDHA1 Antibody - Product Information

Application	WB,E
Primary Accession	P08559
Reactivity	Human, Mouse, Rat
Host	Rabbit
Clonality	Polyclonal
Calculated MW	H=43,44,40,47 KDa
Isotype	Rabbit IgG
Antigen Source	HUMAN

PDHA1 Antibody - Additional Information

Gene ID 5160

Antigen Region
1-390

Other Names

Pyruvate dehydrogenase E1 component subunit alpha, somatic form, mitochondrial, PDHE1-A type I, PDHA1, PHE1A

Dilution

WB~~1:1000

Target/Specificity

This PDHA1 Antibody is generated from rabbits immunized with recombinant protein of human PDHA1.

Storage

Maintain refrigerated at 2-8°C for up to 2 weeks. For long term storage store at -20°C in small aliquots to prevent freeze-thaw cycles.

Precautions

PDHA1 Antibody is for research use only and not for use in diagnostic or therapeutic procedures.

PDHA1 Antibody - Protein Information

Name PDHA1

Synonyms PHE1A

Function

The pyruvate dehydrogenase complex catalyzes the overall conversion of pyruvate to acetyl-CoA

and CO₂), and thereby links the glycolytic pathway to the tricarboxylic cycle.

Cellular Location

Mitochondrion matrix.

Tissue Location

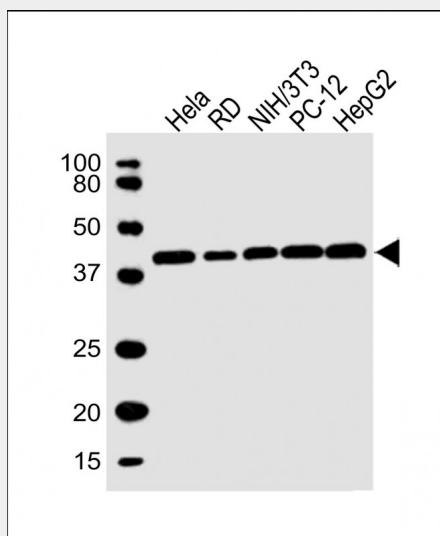
Ubiquitous.

PDHA1 Antibody - Protocols

Provided below are standard protocols that you may find useful for product applications.

- [Western Blot](#)
- [Blocking Peptides](#)
- [Dot Blot](#)
- [Immunohistochemistry](#)
- [Immunofluorescence](#)
- [Immunoprecipitation](#)
- [Flow Cytometry](#)
- [Cell Culture](#)

PDHA1 Antibody - Images



All lanes : Anti-PDHA1 Antibody at 1:1000 dilution Lane 1: HeLa whole cell lysate Lane 2: RD whole cell lysate Lane 3: NIH/3T3 whole cell lysate Lane 4: PC-12 whole cell lysate Lane 5: HepG2 whole cell lysate Lysates/proteins at 20 µg per lane. Secondary Goat Anti-Rabbit IgG, (H+L), Peroxidase conjugated at 1/10000 dilution. Predicted band size : 43 kDa Blocking/Dilution buffer: 5% NFDM/TBST.