

SNRPA Antibody (Center)
Affinity Purified Rabbit Polyclonal Antibody (Pab)
Catalog # AW5557

Specification

SNRPA Antibody (Center) - Product Information

Application	WB, IHC-P,E
Primary Accession	P09012
Reactivity	Human
Host	Rabbit
Clonality	Polyclonal
Calculated MW	H=31;M=32 KDa
Isotype	Rabbit IgG
Antigen Source	HUMAN

SNRPA Antibody (Center) - Additional Information

Gene ID 6626

Antigen Region
83-111

Other Names
U1 small nuclear ribonucleoprotein A, U1 snRNP A, U1-A, U1A, SNRPA

Dilution
WB~~1:1000
IHC-P~~1:10~50

Target/Specificity
This SNRPA antibody is generated from rabbits immunized with a KLH conjugated synthetic peptide between 83-111 amino acids from the Central region of human SNRPA.

Storage
Maintain refrigerated at 2-8°C for up to 2 weeks. For long term storage store at -20°C in small aliquots to prevent freeze-thaw cycles.

Precautions
SNRPA Antibody (Center) is for research use only and not for use in diagnostic or therapeutic procedures.

SNRPA Antibody (Center) - Protein Information

Name SNRPA

Function
Component of the spliceosomal U1 snRNP, which is essential for recognition of the pre-mRNA 5' splice-site and the subsequent assembly of the spliceosome. U1 snRNP is the first snRNP to

interact with pre-mRNA. This interaction is required for the subsequent binding of U2 snRNP and the U4/U6/U5 tri-snRNP. SNRPA binds stem loop II of U1 snRNA. In a snRNP-free form (SF-A) may be involved in coupled pre-mRNA splicing and polyadenylation process. May bind preferentially to the 5'-UGCAC-3' motif on RNAs.

Cellular Location

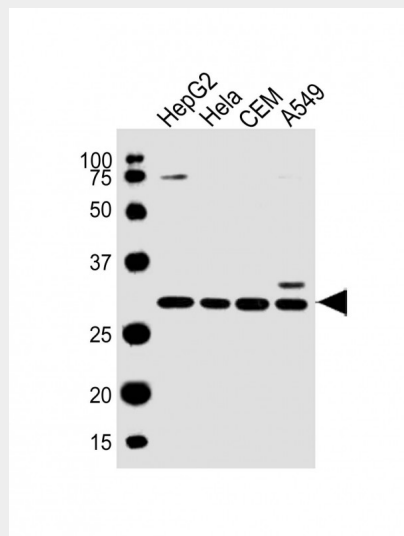
Nucleus.

SNRPA Antibody (Center) - Protocols

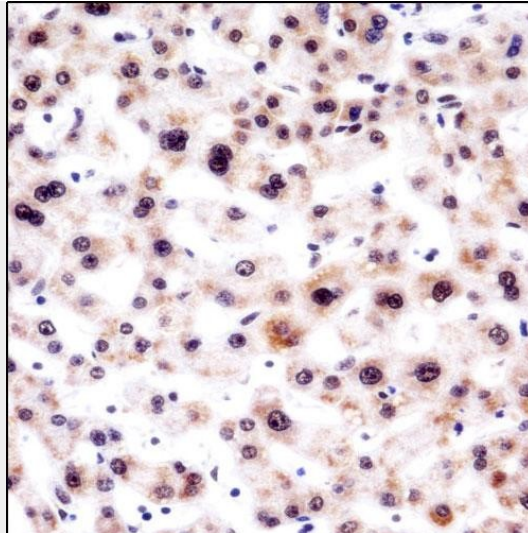
Provided below are standard protocols that you may find useful for product applications.

- [Western Blot](#)
- [Blocking Peptides](#)
- [Dot Blot](#)
- [Immunohistochemistry](#)
- [Immunofluorescence](#)
- [Immunoprecipitation](#)
- [Flow Cytometry](#)
- [Cell Culture](#)

SNRPA Antibody (Center) - Images



All lanes : Anti-SNRPA Antibody (Center) at 1:1000 dilution Lane 1: HepG2 whole cell lysate Lane 2: HeLa whole cell lysate Lane 3: CEM whole cell lysate Lane 4: A549 whole cell lysate Lysates/proteins at 20 µg per lane. Secondary Goat Anti-Rabbit IgG, (H+L), Peroxidase conjugated at 1/10000 dilution. Predicted band size : 31 kDa Blocking/Dilution buffer: 5% NFDm/TBST.



SNRPA Antibody (Center) (AW5557) immunohistochemistry analysis in formalin fixed and paraffin embedded human liver tissue followed by peroxidase conjugation of the secondary antibody and DAB staining. This data demonstrates the use of SNRPA Antibody (Center) for immunohistochemistry. Clinical relevance has not been evaluated.

SNRPA Antibody (Center) - Background

The protein encoded by this gene associates with stem loop II of the U1 small nuclear ribonucleoprotein, which binds the 5' splice site of precursor mRNAs and is required for splicing. The encoded protein autoregulates itself by polyadenylation inhibition of its own pre-mRNA via dimerization and has been implicated in the coupling of splicing and polyadenylation.

SNRPA Antibody (Center) - References

Guan, F., et al. RNA 13(12):2129-2140(2007)
Hall-Pogar, T., et al. RNA 13(7):1103-1115(2007)
Shajani, Z., et al. J. Mol. Biol. 349(4):699-715(2005)
Andersen, J.S., et al. Nature 433(7021):77-83(2005)
Jessen, T.H., et al. EMBO J. 10(11):3447-3456(1991)

SNRPA Antibody (Center) - Citations

- [U1 snRNP proteins promote proximal alternative polyadenylation sites by directly interacting with 3' end processing core factors.](#)