

**PBP Antibody (Center)**  
**Purified Rabbit Polyclonal Antibody (Pab)**  
**Catalog # AW5554**

**Specification**

---

**PBP Antibody (Center) - Product Information**

Application	WB,E
Primary Accession	<a href="#">P30086</a>
Reactivity	Human
Host	Rabbit
Clonality	Polyclonal
Calculated MW	H=21 KDa
Isotype	Rabbit IgG
Antigen Source	HUMAN

**PBP Antibody (Center) - Additional Information**

**Gene ID** 5037

**Antigen Region**  
132-168

**Other Names**

Phosphatidylethanolamine-binding protein 1, PEBP-1, HCNPpp, Neuropolypeptide h3, Prostatic-binding protein, Raf kinase inhibitor protein, RKIP, Hippocampal cholinergic neurostimulating peptide, HCNP, PEBP1, PBP, PEBP

**Dilution**

WB~~1:1000

**Target/Specificity**

This PBP antibody is generated from rabbits immunized with a KLH conjugated synthetic peptide between 132-168 amino acids from the Central region of human PBP.

**Storage**

Maintain refrigerated at 2-8°C for up to 2 weeks. For long term storage store at -20°C in small aliquots to prevent freeze-thaw cycles.

**Precautions**

PBP Antibody (Center) is for research use only and not for use in diagnostic or therapeutic procedures.

**PBP Antibody (Center) - Protein Information**

**Name** PEBP1

**Synonyms** PBP, PEBP

### Function

Binds ATP, opioids and phosphatidylethanolamine. Has lower affinity for phosphatidylinositol and phosphatidylcholine. Serine protease inhibitor which inhibits thrombin, neuropsin and chymotrypsin but not trypsin, tissue type plasminogen activator and elastase (By similarity). Inhibits the kinase activity of RAF1 by inhibiting its activation and by dissociating the RAF1/MEK complex and acting as a competitive inhibitor of MEK phosphorylation.

### Cellular Location

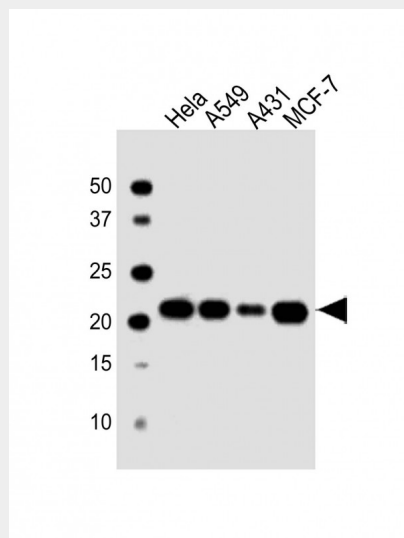
Cytoplasm.

### PBP Antibody (Center) - Protocols

Provided below are standard protocols that you may find useful for product applications.

- [Western Blot](#)
- [Blocking Peptides](#)
- [Dot Blot](#)
- [Immunohistochemistry](#)
- [Immunofluorescence](#)
- [Immunoprecipitation](#)
- [Flow Cytometry](#)
- [Cell Culture](#)

### PBP Antibody (Center) - Images



All lanes : Anti-PBP Antibody (0A152) at 1:1000 dilution Lane 1: HeLa whole cell lysate Lane 2: A549 whole cell lysate Lane 3: A431 whole cell lysate Lane 4: MCF-7 whole cell lysate Lysates/proteins at 20 µg per lane. Secondary Goat Anti-Rabbit IgG, (H+L), Peroxidase conjugated at 1/10000 dilution. Predicted band size : 21 kDa Blocking/Dilution buffer: 5% NFDN/TBST.

### PBP Antibody (Center) - Background

PBP binds ATP, opioids and phosphatidylethanolamine, exhibiting a lower affinity for phosphatidylinositol and phosphatidylcholine. This serine protease inhibitor inhibits thrombin, neuropsin and chymotrypsin but not trypsin, tissue type plasminogen activator and elastase. PBP contains hippocampal cholinergic neurostimulating peptide (HCNP), which may be involved in the function of the presynaptic cholinergic neurons of the central nervous system. HCNP increases the

production of choline acetyltransferase but not acetylcholinesterase.

### **PBP Antibody (Center) - References**

Tohdoh, N., et al., Brain Res. Mol. Brain Res. 30(2):381-384 (1995). Hori, N., et al., Gene 140(2):293-294 (1994). Seddiqi, N., et al., J. Mol. Evol. 39(6):655-660 (1994). Moore, C., et al., Brain Res. Mol. Brain Res. 37 (1-2), 74-78 (1996).