

RPL9 Antibody (C-term)
Affinity Purified Rabbit Polyclonal Antibody (Pab)
Catalog # AW5553

Specification

RPL9 Antibody (C-term) - Product Information

Application	WB,E
Primary Accession	P32969
Reactivity	Human
Host	Rabbit
Clonality	Polyclonal
Calculated MW	H=22;M=22;R=22 KDa
Isotype	Rabbit IgG
Antigen Source	HUMAN

RPL9 Antibody (C-term) - Additional Information

Gene ID 6133

Antigen Region
149-177

Other Names
60S ribosomal protein L9, RPL9

Dilution
WB~~1:1000

Target/Specificity
This RPL9 antibody is generated from rabbits immunized with a KLH conjugated synthetic peptide between 149-177 amino acids from the C-terminal region of human RPL9.

Storage
Maintain refrigerated at 2-8°C for up to 2 weeks. For long term storage store at -20°C in small aliquots to prevent freeze-thaw cycles.

Precautions
RPL9 Antibody (C-term) is for research use only and not for use in diagnostic or therapeutic procedures.

RPL9 Antibody (C-term) - Protein Information

Name RPL9

Function
Component of the large ribosomal subunit (PubMed: [23636399](http://www.uniprot.org/citations/23636399), PubMed: [32669547](http://www.uniprot.org/citations/32669547)). The

ribosome is a large ribonucleoprotein complex responsible for the synthesis of proteins in the cell (PubMed:23636399, PubMed:32669547).

Cellular Location

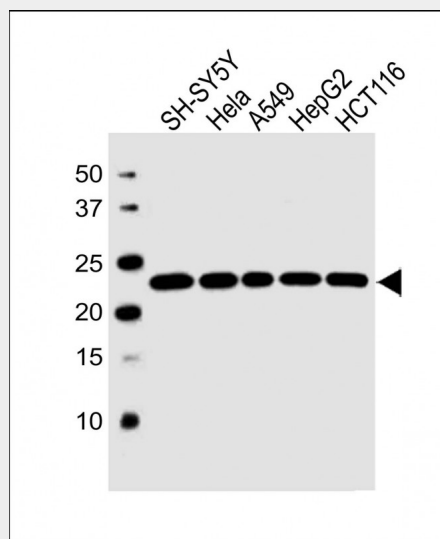
Cytoplasm.

RPL9 Antibody (C-term) - Protocols

Provided below are standard protocols that you may find useful for product applications.

- [Western Blot](#)
- [Blocking Peptides](#)
- [Dot Blot](#)
- [Immunohistochemistry](#)
- [Immunofluorescence](#)
- [Immunoprecipitation](#)
- [Flow Cytometry](#)
- [Cell Culture](#)

RPL9 Antibody (C-term) - Images



All lanes : Anti-RPL9 Antibody (C-term) at 1:1000 dilution Lane 1: SH-SY5Y whole cell lysate Lane 2: HeLa whole cell lysate Lane 3: A549 whole cell lysate Lane 4: HepG2 whole cell lysate Lane 5: HCT116 whole cell lysate Lysates/proteins at 20 μ g per lane. Secondary Goat Anti-Rabbit IgG, (H+L), Peroxidase conjugated at 1/10000 dilution. Predicted band size : 22 kDa Blocking/Dilution buffer: 5% NFD/MTBST.

RPL9 Antibody (C-term) - Background

Ribosomes, the organelles that catalyze protein synthesis, consist of a small 40S subunit and a large 60S subunit. Together these subunits are composed of 4 RNA species and approximately 80 structurally distinct proteins. This gene encodes a ribosomal protein that is a component of the 60S subunit. The protein belongs to the L6P family of ribosomal proteins. It is located in the cytoplasm. As is typical for genes encoding ribosomal proteins,

there are multiple processed pseudogenes of this gene dispersed through the genome. Two alternatively spliced transcript variants encoding the same protein have been found for this gene. [provided by RefSeq].

RPL9 Antibody (C-term) - References

Oh, J.H., et al. Mamm. Genome 16(12):942-954(2005)
Andersen, J.S., et al. Nature 433(7021):77-83(2005)
Kapp, L.D., et al. Annu. Rev. Biochem. 73, 657-704 (2004) :
Mazumder, B., et al. Cell 115(2):187-198(2003)
Andersen, J.S., et al. Curr. Biol. 12(1):1-11(2002)