

SNRPD3 Antibody (C-term)
Affinity Purified Rabbit Polyclonal Antibody (Pab)
Catalog # AW5549

Specification

SNRPD3 Antibody (C-term) - Product Information

Application	WB, IHC-P, FC,E
Primary Accession	P62318
Reactivity	Human
Host	Rabbit
Clonality	Polyclonal
Calculated MW	H=14;M=14 KDa
Isotype	Rabbit IgG
Antigen Source	HUMAN

SNRPD3 Antibody (C-term) - Additional Information

Gene ID 6634

Antigen Region
99-126

Other Names

Small nuclear ribonucleoprotein Sm D3, Sm-D3, snRNP core protein D3, SNRPD3

Dilution

WB~~1:1000
IHC-P~~1:50~100
FC~~1:10~50

Target/Specificity

This SNRPD3 antibody is generated from rabbits immunized with a KLH conjugated synthetic peptide between 99-126 amino acids from the C-terminal region of human SNRPD3.

Storage

Maintain refrigerated at 2-8°C for up to 2 weeks. For long term storage store at -20°C in small aliquots to prevent freeze-thaw cycles.

Precautions

SNRPD3 Antibody (C-term) is for research use only and not for use in diagnostic or therapeutic procedures.

SNRPD3 Antibody (C-term) - Protein Information

Name SNRPD3

Function

Plays a role in pre-mRNA splicing as a core component of the spliceosomal U1, U2, U4 and U5

small nuclear ribonucleoproteins (snRNPs), the building blocks of the spliceosome (PubMed:11991638, PubMed:18984161, PubMed:19325628, PubMed:25555158, PubMed:26912367, PubMed:28076346, PubMed:28502770, PubMed:28781166, PubMed:32494006). Component of both the pre-catalytic spliceosome B complex and activated spliceosome C complexes (PubMed:11991638, PubMed:28076346, PubMed:28502770, PubMed:28781166). As a component of the minor spliceosome, involved in the splicing of U12-type introns in pre-mRNAs (PubMed:15146077, PubMed:33509932). As part of the U7 snRNP it is involved in histone pre-mRNA 3'-end processing (By similarity).

Cellular Location

Cytoplasm, cytosol. Nucleus. Note=SMN- mediated assembly into core snRNPs occurs in the cytosol before SMN- mediated transport to the nucleus to be included in spliceosomes

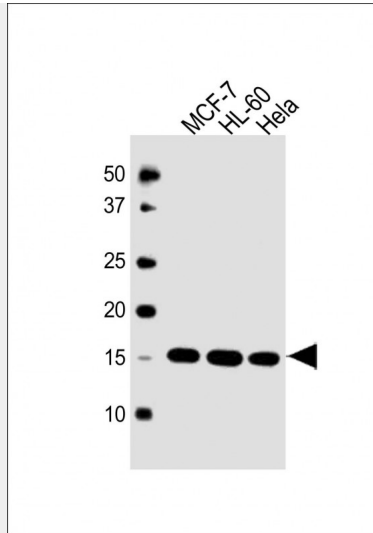
SNRPD3 Antibody (C-term) - Protocols

Provided below are standard protocols that you may find useful for product applications.

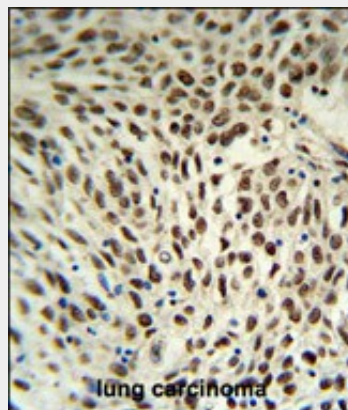
- [Western Blot](#)
- [Blocking Peptides](#)
- [Dot Blot](#)
- [Immunohistochemistry](#)
- [Immunofluorescence](#)
- [Immunoprecipitation](#)
- [Flow Cytometry](#)
- [Cell Culture](#)

SNRPD3 Antibody (C-term) - Images

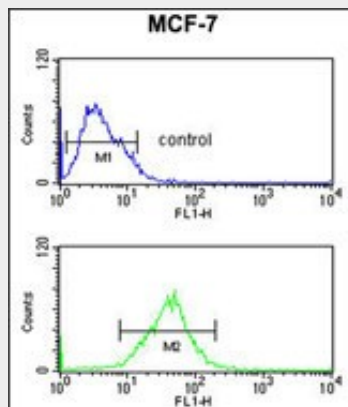




All lanes : Anti-SNRPD3 Antibody (C-term) at 1:1000 dilution Lane 1: MCF-7 whole cell lysate Lane 2: HL-60 whole cell lysate Lane 3: HeLa whole cell lysate Lysates/proteins at 20 µg per lane. Secondary Goat Anti-Rabbit IgG, (H+L), Peroxidase conjugated at 1/10000 dilution. Predicted band size : 14 kDa Blocking/Dilution buffer: 5% NFD/MTBST.



SNRPD3 Antibody (C-term) (Cat. #AW5549) IHC analysis in formalin fixed and paraffin embedded human lung carcinoma followed by peroxidase conjugation of the secondary antibody and DAB staining. This data demonstrates the use of the SNRPD3 Antibody (C-term) for immunohistochemistry. Clinical relevance has not been evaluated.



SNRPD3 Antibody (C-term) (Cat. #AW5549) flow cytometric analysis of MCF-7 cells (bottom histogram) compared to a negative control cell (top histogram).FITC-conjugated goat-anti-rabbit secondary antibodies were used for the analysis.

SNRPD3 Antibody (C-term) - Background

The protein belongs to the small nuclear ribonucleoprotein core protein family. It is required for pre-mRNA splicing and small nuclear ribonucleoprotein biogenesis.

SNRPD3 Antibody (C-term) - References

Gonsalvez,G.B., et.al., J. Cell Biol. 178 (5), 733-740 (2007)

Ma,Y., et.al., Structure 13 (6), 883-892 (2005)

Mahler,M., et.al., Arthritis Res. Ther. 7 (1), R19-R29 (2005)