

**GTF2E1 Antibody (N-term)**  
**Affinity Purified Rabbit Polyclonal Antibody (Pab)**  
**Catalog # AW5548**

**Specification**

---

**GTF2E1 Antibody (N-term) - Product Information**

Application	WB, IHC-P,E
Primary Accession	<a href="#">P29083</a>
Reactivity	Human, Rat
Host	Rabbit
Clonality	Polyclonal
Calculated MW	H=49;M=50 KDa
Isotype	Rabbit IgG
Antigen Source	HUMAN

**GTF2E1 Antibody (N-term) - Additional Information**

**Gene ID** 2960

**Antigen Region**  
93-121

**Other Names**

General transcription factor IIE subunit 1, General transcription factor IIE 56 kDa subunit, Transcription initiation factor IIE subunit alpha, TFIIE-alpha, GTF2E1, TF2E1

**Dilution**

WB~~1:1000  
IHC-P~~1:10~50

**Target/Specificity**

This GTF2E1 antibody is generated from rabbits immunized with a KLH conjugated synthetic peptide between 93-121 amino acids from the N-terminal region of human GTF2E1.

**Storage**

Maintain refrigerated at 2-8°C for up to 2 weeks. For long term storage store at -20°C in small aliquots to prevent freeze-thaw cycles.

**Precautions**

GTF2E1 Antibody (N-term) is for research use only and not for use in diagnostic or therapeutic procedures.

**GTF2E1 Antibody (N-term) - Protein Information**

**Name** GTF2E1

**Synonyms** TF2E1

### Function

Recruits TFIIH to the initiation complex and stimulates the RNA polymerase II C-terminal domain kinase and DNA-dependent ATPase activities of TFIIH. Both TFIIH and TFIIE are required for promoter clearance by RNA polymerase.

### Cellular Location

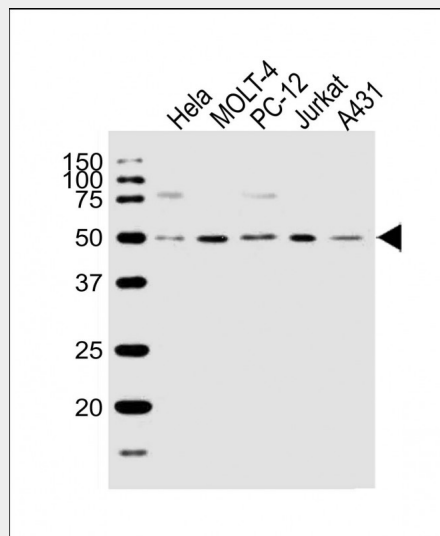
Nucleus

### GTF2E1 Antibody (N-term) - Protocols

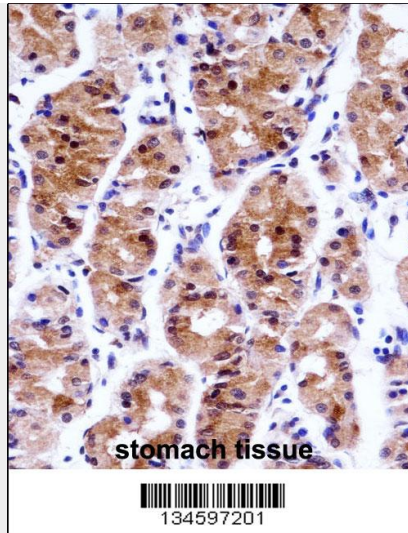
Provided below are standard protocols that you may find useful for product applications.

- [Western Blot](#)
- [Blocking Peptides](#)
- [Dot Blot](#)
- [Immunohistochemistry](#)
- [Immunofluorescence](#)
- [Immunoprecipitation](#)
- [Flow Cytometry](#)
- [Cell Culture](#)

### GTF2E1 Antibody (N-term) - Images



All lanes : Anti-GTF2E1 Antibody (N-term) at 1:1000 dilution Lane 1: HeLa whole cell lysate Lane 2: MOLT-4 whole cell lysate Lane 3: PC-12 whole cell lysate Lane 4: Jurkat whole cell lysate Lane 5: A431 whole cell lysate Lysates/proteins at 20  $\mu$ g per lane. Secondary Goat Anti-Rabbit IgG, (H+L), Peroxidase conjugated at 1/10000 dilution. Predicted band size : 49 kDa Blocking/Dilution buffer: 5% NFDM/TBST.



GTF2E1 Antibody (N-term) (AW5548) immunohistochemistry analysis in formalin fixed and paraffin embedded human stomach tissue followed by peroxidase conjugation of the secondary antibody and DAB staining. This data demonstrates the use of GTF2E1 Antibody (N-term) for immunohistochemistry. Clinical relevance has not been evaluated.

#### **GTF2E1 Antibody (N-term) - Background**

Recruits TFIID to the initiation complex and stimulates the RNA polymerase II C-terminal domain kinase and DNA-dependent ATPase activities of TFIID. Both TFIID and TFIIE are required for promoter clearance by RNA polymerase.

#### **GTF2E1 Antibody (N-term) - References**

- Vega, A., et al. *Gynecol. Oncol.* 112(1):210-214(2009)
- Okuda, M., et al. *EMBO J.* 27(7):1161-1171(2008)
- Di Lello, P., et al. *Proc. Natl. Acad. Sci. U.S.A.* 105(1):106-111(2008)
- Jawhari, A., et al. *EMBO Rep.* 7(5):500-505(2006)
- Okuda, M., et al. *J. Biol. Chem.* 279(49):51395-51403(2004)