

VPS37C Antibody (Center)
Affinity Purified Rabbit Polyclonal Antibody (Pab)
Catalog # AW5543

Specification

VPS37C Antibody (Center) - Product Information

Application	WB,E
Primary Accession	A5D8V6
Reactivity	Human, Rat
Host	Rabbit
Clonality	Polyclonal
Calculated MW	H=39 KDa
Isotype	Rabbit IgG
Antigen Source	HUMAN

VPS37C Antibody (Center) - Additional Information

Gene ID 55048

Antigen Region
142-169

Other Names

Vacuolar protein sorting-associated protein 37C, hVps37C, ESCRT-I complex subunit VPS37C, VPS37C, PML39

Dilution

WB~~1:1000

Target/Specificity

This VPS37C antibody is generated from rabbits immunized with a KLH conjugated synthetic peptide between 142-169 amino acids from the Central region of human VPS37C.

Storage

Maintain refrigerated at 2-8°C for up to 2 weeks. For long term storage store at -20°C in small aliquots to prevent freeze-thaw cycles.

Precautions

VPS37C Antibody (Center) is for research use only and not for use in diagnostic or therapeutic procedures.

VPS37C Antibody (Center) - Protein Information

Name VPS37C

Synonyms PML39

Function

Component of the ESCRT-I complex, a regulator of vesicular trafficking process. Required for the sorting of endocytic ubiquitinated cargos into multivesicular bodies. May be involved in cell growth and differentiation.

Cellular Location

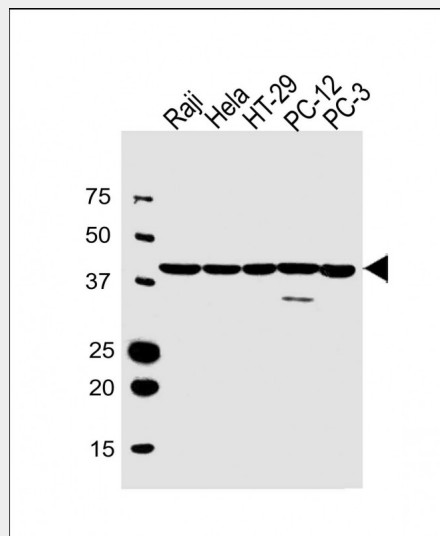
Late endosome membrane; Peripheral membrane protein. Note=Probably associates with membranes Recruited to the plasma membrane by HIV-1

VPS37C Antibody (Center) - Protocols

Provided below are standard protocols that you may find useful for product applications.

- [Western Blot](#)
- [Blocking Peptides](#)
- [Dot Blot](#)
- [Immunohistochemistry](#)
- [Immunofluorescence](#)
- [Immunoprecipitation](#)
- [Flow Cytometry](#)
- [Cell Culture](#)

VPS37C Antibody (Center) - Images



All lanes : Anti-VPS37C Antibody (Center) at 1:1000 dilution Lane 1: Raji whole cell lysate Lane 2: HeLa whole cell lysate Lane 3: HT-29 whole cell lysate Lane 4: PC-12 whole cell lysate Lane 5: PC-3 whole cell lysate Lysates/proteins at 20 µg per lane. Secondary Goat Anti-Rabbit IgG, (H+L), Peroxidase conjugated at 1/10000 dilution. Predicted band size : 39 kDa Blocking/Dilution buffer: 5% NFDM/TBST.

VPS37C Antibody (Center) - Background

VPS37C is a subunit of ESCRT-I (endosomal sorting complex required for transport I), a complex in the class E vacuolar protein sorting (VPS) pathway required for sorting ubiquitinated transmembrane proteins into internal vesicles of multivesicular bodies (Eastman et al., 2005 [PubMed 15509564]).

VPS37C Antibody (Center) - References

Rose, J. Phd, et al. Mol. Med. (2010) In press :
Hosgood, H.D. III, et al. Occup Environ Med 66(12):848-853(2009)
Eastman, S.W., et al. J. Biol. Chem. 280(1):628-636(2005)