

Mouse Gpi Antibody(C-term)
Affinity Purified Rabbit Polyclonal Antibody (Pab)
Catalog # AW5542

Specification

Mouse Gpi Antibody(C-term) - Product Information

Application	WB,E
Primary Accession	P06745
Reactivity	Mouse
Host	Rabbit
Clonality	Polyclonal
Calculated MW	M=63 KDa
Isotype	Rabbit IgG
Antigen Source	HUMAN

Mouse Gpi Antibody(C-term) - Additional Information

Gene ID 14751

Antigen Region
532-558

Other Names

Glucose-6-phosphate isomerase, GPI, Autocrine motility factor, AMF, Neuroleukin, NLK, Phosphoglucose isomerase, PGI, Phosphohexose isomerase, PHI, Gpi, Gpi1

Dilution

WB~~1:1000

Target/Specificity

This Mouse Gpi antibody is generated from rabbits immunized with a KLH conjugated synthetic peptide between 532-558 amino acids from the C-terminal region of mouse Gpi.

Storage

Maintain refrigerated at 2-8°C for up to 2 weeks. For long term storage store at -20°C in small aliquots to prevent freeze-thaw cycles.

Precautions

Mouse Gpi Antibody(C-term) is for research use only and not for use in diagnostic or therapeutic procedures.

Mouse Gpi Antibody(C-term) - Protein Information

Name Gpi {ECO:0000303|PubMed:7545951}

Function

In the cytoplasm, catalyzes the conversion of glucose-6- phosphate to fructose-6-phosphate, the second step in glycolysis, and the reverse reaction during gluconeogenesis (PubMed:<a

[2344351](http://www.uniprot.org/citations/2344351), PubMed:[7277315](http://www.uniprot.org/citations/7277315), PubMed:[8417789](http://www.uniprot.org/citations/8417789)). Besides its role as a glycolytic enzyme, also acts as a secreted cytokine: acts as an angiogenic factor (AMF) that stimulates endothelial cell motility (By similarity). Acts as a neurotrophic factor, neuroleukin, for spinal and sensory neurons (PubMed:[3352745](http://www.uniprot.org/citations/3352745), PubMed:[3764429](http://www.uniprot.org/citations/3764429)). It is secreted by lectin-stimulated T-cells and induces immunoglobulin secretion (PubMed:[3352745](http://www.uniprot.org/citations/3352745)).

Cellular Location

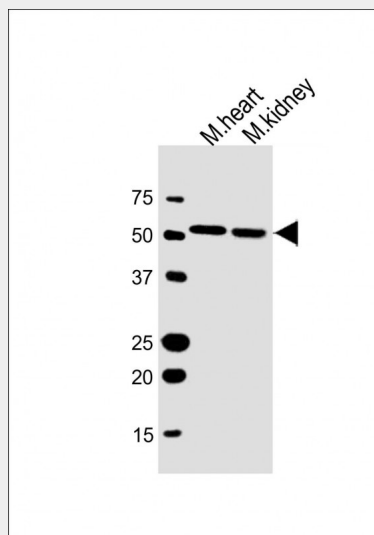
Cytoplasm {ECO:0000250|UniProtKB:P06744}. Secreted {ECO:0000250|UniProtKB:P06744}

Mouse Gpi Antibody(C-term) - Protocols

Provided below are standard protocols that you may find useful for product applications.

- [Western Blot](#)
- [Blocking Peptides](#)
- [Dot Blot](#)
- [Immunohistochemistry](#)
- [Immunofluorescence](#)
- [Immunoprecipitation](#)
- [Flow Cytometry](#)
- [Cell Culture](#)

Mouse Gpi Antibody(C-term) - Images



All lanes : Anti-Gpi Antibody (C-term) at 1:1000 dilution Lane 1: mouse heart lysate Lane 2: mouse kidney lysate Lysates/proteins at 20 µg per lane. Secondary Goat Anti-Rabbit IgG, (H+L), Peroxidase conjugated at 1/10000 dilution. Predicted band size : 63 kDa Blocking/Dilution buffer: 5% NFDM/TBST.

Mouse Gpi Antibody(C-term) - Background

Besides its role as a glycolytic enzyme, mammalian GPI can function as a tumor-secreted cytokine

and an angiogenic factor (AMF) that stimulates endothelial cell motility. GPI is also a neurotrophic factor (Neuroleukin) for spinal and sensory neurons.

Mouse Gpi Antibody(C-term) - References

- Benveniste, P., et al. Cell Stem Cell 6(1):48-58(2010)
Repiso, A., et al. Anat Histol Embryol 37(5):380-382(2008)
Szuber, N., et al. Exp. Hematol. 36(7):773-785(2008)
Chandele, A., et al. J. Immunol. 180(8):5309-5319(2008)
Cuda, C.M., et al. J. Immunol. 179(11):7439-7447(2007)