

LDHA Antibody (C-term)
Affinity Purified Rabbit Polyclonal Antibody (Pab)
Catalog # AW5540

Specification

LDHA Antibody (C-term) - Product Information

Application	IF, WB, IHC-P,E
Primary Accession	P00338
Reactivity	Human, Mouse
Host	Rabbit
Clonality	Polyclonal
Calculated MW	H=40,30,27,37;M=36;R=36 KDa
Isotype	Rabbit IgG
Antigen Source	HUMAN

LDHA Antibody (C-term) - Additional Information

Gene ID 3939

Antigen Region
204-232

Other Names

L-lactate dehydrogenase A chain, LDH-A, Cell proliferation-inducing gene 19 protein, LDH muscle subunit, LDH-M, Renal carcinoma antigen NY-REN-59, LDHA

Dilution

IF~~1:10~50
WB~~1:1000
IHC-P~~1:10~50

Target/Specificity

This LDHA antibody is generated from rabbits immunized with a KLH conjugated synthetic peptide between 204-232 amino acids from the C-terminal region of human LDHA.

Storage

Maintain refrigerated at 2-8°C for up to 2 weeks. For long term storage store at -20°C in small aliquots to prevent freeze-thaw cycles.

Precautions

LDHA Antibody (C-term) is for research use only and not for use in diagnostic or therapeutic procedures.

LDHA Antibody (C-term) - Protein Information

Name LDHA ([HGNC:6535](#))

Function

Interconverts simultaneously and stereospecifically pyruvate and lactate with concomitant interconversion of NADH and NAD(+).

Cellular Location

Cytoplasm.

Tissue Location

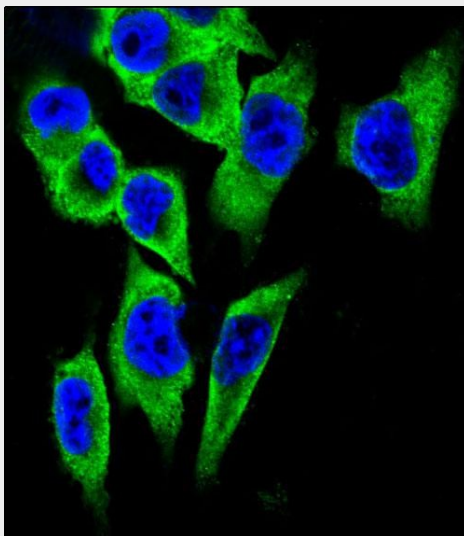
Predominantly expressed in anaerobic tissues such as skeletal muscle and liver.

LDHA Antibody (C-term) - Protocols

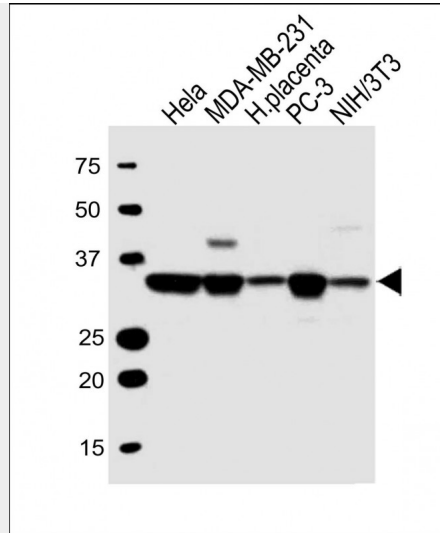
Provided below are standard protocols that you may find useful for product applications.

- [Western Blot](#)
- [Blocking Peptides](#)
- [Dot Blot](#)
- [Immunohistochemistry](#)
- [Immunofluorescence](#)
- [Immunoprecipitation](#)
- [Flow Cytometry](#)
- [Cell Culture](#)

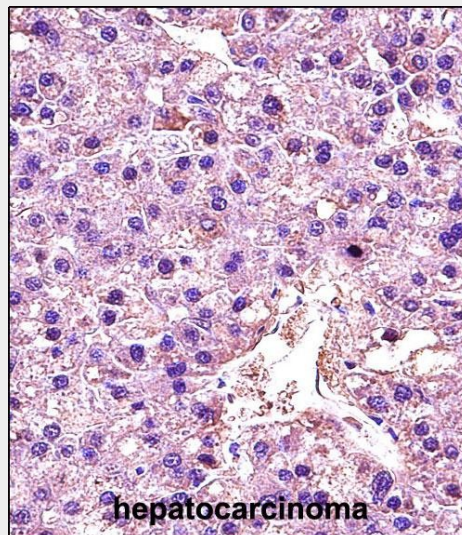
LDHA Antibody (C-term) - Images



Confocal immunofluorescent analysis of LDHA Antibody (C-term)(Cat#AW5540) with A375 cell followed by Alexa Fluor 488-conjugated goat anti-rabbit IgG (green).DAPI was used to stain the cell nuclear (blue).



All lanes : Anti-LDHA Antibody (C-term) at 1:1000 dilution Lane 1: HeLa whole cell lysate Lane 2: MDA-MB-231 whole cell lysate Lane 3: human placenta lysate Lane 4: PC-3 whole cell lysate Lane 5: NIH/3T3 whole cell lysate Lysates/proteins at 20 µg per lane. Secondary Goat Anti-Rabbit IgG, (H+L), Peroxidase conjugated at 1/10000 dilution. Predicted band size : 36 kDa. Blocking/Dilution buffer: 5% NFDN/TBST.



LDHA Antibody (C-term) (Cat. #AW5540) immunohistochemistry analysis in formalin fixed and paraffin embedded human hepatocarcinoma followed by peroxidase conjugation of the secondary antibody and DAB staining. This data demonstrates the use of LDHA Antibody (C-term) for immunohistochemistry. Clinical relevance has not been evaluated.

LDHA Antibody (C-term) - Background

The protein encoded by this gene catalyzes the conversion of L-lactate and NAD to pyruvate and NADH in the final step of anaerobic glycolysis. The protein is found predominantly in muscle tissue and belongs to the lactate dehydrogenase family. Mutations in this gene have been linked to exertional myoglobinuria. Multiple transcript variants encoding different isoforms have been found for this gene. The human genome contains several non-transcribed pseudogenes of this gene.

LDHA Antibody (C-term) - References

- Shimada, M., et al. Hum. Genet. 128(4):433-441(2010)
Zhu, X., et al. Genet. Epidemiol. 34(2):171-187(2010)
Zhuang, L., et al. Mod. Pathol. 23(1):45-53(2010)
Zhao, Y.H., et al. Oncogene 28(42):3689-3701(2009)
Koukourakis, M.I., et al. Oncology 77(5):285-292(2009)