

CECR5 Antibody (Center)
Affinity Purified Rabbit Polyclonal Antibody (Pab)
Catalog # AW5530

Specification

CECR5 Antibody (Center) - Product Information

Application	WB, IHC-P, FC,E
Primary Accession	Q9BXW7
Reactivity	Human
Host	Rabbit
Clonality	Polyclonal
Calculated MW	H=46,44 KDa
Isotype	Rabbit IgG
Antigen Source	HUMAN

CECR5 Antibody (Center) - Additional Information

Gene ID 27440

Antigen Region
164-190

Other Names
Cat eye syndrome critical region protein 5, CECR5

Dilution
WB~~1:1000
IHC-P~~1:50~100
FC~~1:10~50

Target/Specificity
This CECR5 antibody is generated from rabbits immunized with a KLH conjugated synthetic peptide between 164-190 amino acids from the Central region of human CECR5.

Storage
Maintain refrigerated at 2-8°C for up to 2 weeks. For long term storage store at -20°C in small aliquots to prevent freeze-thaw cycles.

Precautions
CECR5 Antibody (Center) is for research use only and not for use in diagnostic or therapeutic procedures.

CECR5 Antibody (Center) - Protein Information

Name HDHD5 ([HGNC:1843](#))

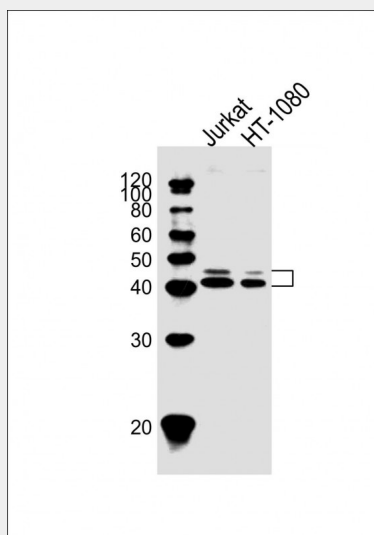
Tissue Location
Widely expressed.

CECR5 Antibody (Center) - Protocols

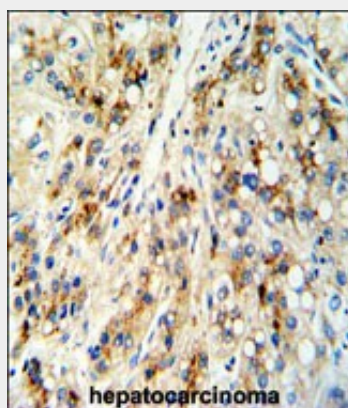
Provided below are standard protocols that you may find useful for product applications.

- [Western Blot](#)
- [Blocking Peptides](#)
- [Dot Blot](#)
- [Immunohistochemistry](#)
- [Immunofluorescence](#)
- [Immunoprecipitation](#)
- [Flow Cytometry](#)
- [Cell Culture](#)

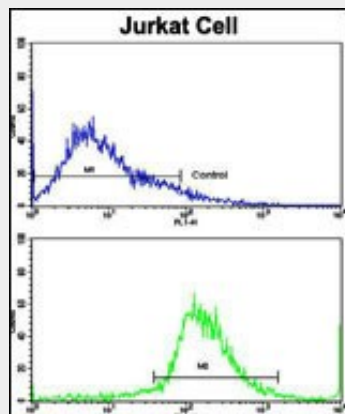
CECR5 Antibody (Center) - Images



All lanes : Anti-CECR5 Antibody (Center) at 1:1000 dilution Lane 1: Jurkat whole cell lysate Lane 2: HT-1080 whole cell lysate Lysates/proteins at 20 μ g per lane. Secondary Goat Anti-Rabbit IgG, (H+L), Peroxidase conjugated at 1/10000 dilution. Predicted band size : 46 kDa Blocking/Dilution buffer: 5% NFDM/TBST.



Formalin-fixed and paraffin-embedded human hepatocarcinoma reacted with CECR5 Antibody (Center), which was peroxidase-conjugated to the secondary antibody, followed by DAB staining. This data demonstrates the use of this antibody for immunohistochemistry; clinical relevance has not been evaluated.



Flow cytometric analysis of jurkat cells using CECR5 Antibody (Center)(bottom histogram) compared to a negative control cell (top histogram). FITC-conjugated goat-anti-rabbit secondary antibodies were used for the analysis.

CECR5 Antibody (Center) - References

Footz,T.K., et.al., Genome Res. 11 (6), 1053-1070 (2001)