

EBAG9 Antibody (Center)
Affinity Purified Rabbit Polyclonal Antibody (Pab)
Catalog # AW5528

Specification

EBAG9 Antibody (Center) - Product Information

Application	WB,E
Primary Accession	O00559
Reactivity	Human
Host	Rabbit
Clonality	Polyclonal
Calculated MW	H=24,29;M=24;R=24 KDa
Isotype	Rabbit IgG
Antigen Source	HUMAN

EBAG9 Antibody (Center) - Additional Information

Gene ID 9166

Antigen Region
88-117

Other Names

Receptor-binding cancer antigen expressed on SiSo cells, Cancer-associated surface antigen RCAS1, Estrogen receptor-binding fragment-associated gene 9 protein, EBAG9, RCAS1

Dilution

WB~~1:1000

Target/Specificity

This EBAG9 antibody is generated from rabbits immunized with a KLH conjugated synthetic peptide between 88-117 amino acids from the Central region of human EBAG9.

Storage

Maintain refrigerated at 2-8°C for up to 2 weeks. For long term storage store at -20°C in small aliquots to prevent freeze-thaw cycles.

Precautions

EBAG9 Antibody (Center) is for research use only and not for use in diagnostic or therapeutic procedures.

EBAG9 Antibody (Center) - Protein Information

Name EBAG9

Synonyms RCAS1

Function

May participate in suppression of cell proliferation and induces apoptotic cell death through activation of interleukin-1-beta converting enzyme (ICE)-like proteases.

Cellular Location

Golgi apparatus membrane; Single-pass type III membrane protein. Note=According to PubMed:10426319, it also exists as a soluble form which has the same biological activities The existence of such soluble form is however uncertain

Tissue Location

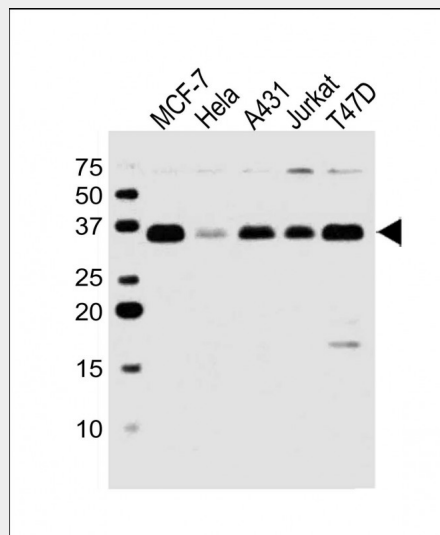
Widely expressed. Expressed in ovary, testis, prostate, thymus, muscle and heart, but not in small intestine, colon, lymph nodes, or peripheral blood lymphocytes. The protein is not detected in any of the above organs

EBAG9 Antibody (Center) - Protocols

Provided below are standard protocols that you may find useful for product applications.

- [Western Blot](#)
- [Blocking Peptides](#)
- [Dot Blot](#)
- [Immunohistochemistry](#)
- [Immunofluorescence](#)
- [Immunoprecipitation](#)
- [Flow Cytometry](#)
- [Cell Culture](#)

EBAG9 Antibody (Center) - Images



All lanes : Anti-EBAG9 Antibody (Center) at 1:1000 dilution Lane 1: MCF-7 whole cell lysate Lane 2: HeLa whole cell lysate Lane 3: A431 whole cell lysate Lane 4: Jurkat whole cell lysate Lane 5: T47D whole cell lysate Lysates/proteins at 20 µg per lane. Secondary Goat Anti-Rabbit IgG, (H+L), Peroxidase conjugated at 1/10000 dilution. Predicted band size : 24 kDa. Blocking/Dilution buffer: 5% NFDM/TBST.

EBAG9 Antibody (Center) - Background

This gene was identified as an estrogen-responsive gene.

Regulation of transcription by estrogen is mediated by estrogen receptor which binds to the estrogen-responsive element (ERE) found in the 5'-flanking region of this gene. The encoded protein is a tumor-associated antigen that is expressed at high frequency in a variety of cancers. Two transcript variants differing in the 5' UTR, but encoding the same protein, have been identified for this gene.

EBAG9 Antibody (Center) - References

- Wolf, J., et al. FASEB J. 24(10):4000-4019(2010)
Sonoda, K., et al. Exp. Cell Res. 316(11):1795-1803(2010)
Ali-Fehmi, R., et al. Cancer Biomark 6(1):33-48(2010)
Yang, Y.C., et al. Zhonghua Wai Ke Za Zhi 47(13):999-1001(2009)
Adamek, D., et al. Folia Neuropathol 47(3):240-246(2009)