

**PPP2R2A Antibody (N-term)**  
**Purified Rabbit Polyclonal Antibody (Pab)**  
**Catalog # AW5520**

**Specification**

---

**PPP2R2A Antibody (N-term) - Product Information**

Application	WB,E
Primary Accession	<a href="#">P63151</a>
Reactivity	Human, Mouse, Rat
Host	Rabbit
Clonality	Polyclonal
Calculated MW	H=52,53;M=52;R=52 KDa
Isotype	Rabbit IgG
Antigen Source	HUMAN

**PPP2R2A Antibody (N-term) - Additional Information**

**Gene ID** 5520

**Antigen Region**  
126-160

**Other Names**

Serine/threonine-protein phosphatase 2A 55 kDa regulatory subunit B alpha isoform, PP2A subunit B isoform B55-alpha, PP2A subunit B isoform PR55-alpha, PP2A subunit B isoform R2-alpha, PP2A subunit B isoform alpha, PPP2R2A

**Dilution**

WB~~1:2000

**Target/Specificity**

This PPP2R2A antibody is generated from a rabbit immunized with a KLH conjugated synthetic peptide between 126-160 amino acids from the N-terminal region of human PPP2R2A.

**Storage**

Maintain refrigerated at 2-8°C for up to 2 weeks. For long term storage store at -20°C in small aliquots to prevent freeze-thaw cycles.

**Precautions**

PPP2R2A Antibody (N-term) is for research use only and not for use in diagnostic or therapeutic procedures.

**PPP2R2A Antibody (N-term) - Protein Information**

**Name** PPP2R2A

**Function**

The B regulatory subunit might modulate substrate selectivity and catalytic activity, and also

might direct the localization of the catalytic enzyme to a particular subcellular compartment. Essential for serine/threonine-protein phosphatase 2A-mediated dephosphorylation of WEE1, preventing its ubiquitin-mediated proteolysis, increasing WEE1 protein levels, and promoting the G2/M checkpoint (PubMed: <http://www.uniprot.org/citations/33108758> target="\_blank">33108758</a>).

#### Tissue Location

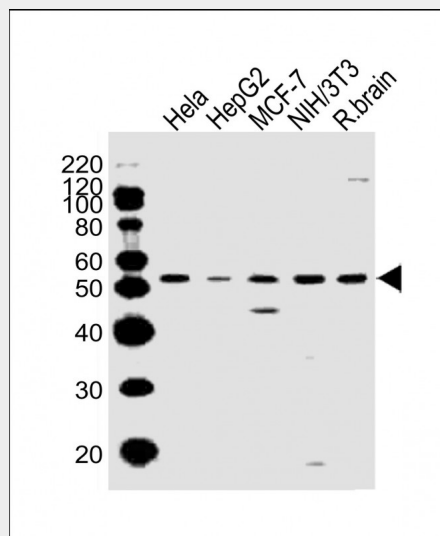
Expressed in all tissues examined.

#### PPP2R2A Antibody (N-term) - Protocols

Provided below are standard protocols that you may find useful for product applications.

- [Western Blot](#)
- [Blocking Peptides](#)
- [Dot Blot](#)
- [Immunohistochemistry](#)
- [Immunofluorescence](#)
- [Immunoprecipitation](#)
- [Flow Cytometry](#)
- [Cell Culture](#)

#### PPP2R2A Antibody (N-term) - Images



All lanes : Anti-PPP2R2A Antibody (N-term) at 1:2000 dilution Lane 1: HeLa whole cell lysates Lane 2: HepG2 whole cell lysates Lane 3: MCF-7 whole cell lysates Lane 4: NIH/3T3 whole cell lysates Lane 5: rat brain lysates Lysates/proteins at 20  $\mu$ g per lane. Secondary Goat Anti-Rabbit IgG, (H+L), Peroxidase conjugated at 1/10000 dilution. Predicted band size : 52 kDa Blocking/Dilution buffer: 5% NFDN/TBST.

#### PPP2R2A Antibody (N-term) - Background

The B regulatory subunit might modulate substrate selectivity and catalytic activity, and also might direct the localization of the catalytic enzyme to a particular subcellular compartment.

#### PPP2R2A Antibody (N-term) - References

Mayer R.E.,et al.Biochemistry 30:3589-3597(1991).  
Ota T.,et al.Nat. Genet. 36:40-45(2004).  
Nusbaum C.,et al.Nature 439:331-335(2006).  
Mural R.J.,et al.Submitted (SEP-2005) to the EMBL/GenBank/DDBJ databases.  
Li H.H.,et al.EMBO J. 26:402-411(2007).