

**(DANRE) opn1mw2 Antibody (Center)**  
**Purified Rabbit Polyclonal Antibody (Pab)**  
**Catalog # AW5516**

**Specification**

---

**(DANRE) opn1mw2 Antibody (Center) - Product Information**

Application	WB,E
Primary Accession	<a href="#">Q8AYM8</a>
Reactivity	Zebrafish
Host	Rabbit
Clonality	Polyclonal
Calculated MW	Z=39 KDa
Isotype	Rabbit IgG
Antigen Source	HUMAN

**(DANRE) opn1mw2 Antibody (Center) - Additional Information**

**Gene ID** 360151

**Antigen Region**  
140-171

**Other Names**

Green-sensitive opsin-2, Green cone photoreceptor pigment 2, Opsin RH2-2, Opsin-1, medium-wave-sensitive 2, opn1mw2, rh22

**Dilution**

WB~~1:2000

**Target/Specificity**

This DANRE opn1mw2 antibody is generated from a rabbit immunized with a KLH conjugated synthetic peptide between 140-171 amino acids from the Central region of DANRE opn1mw2.

**Storage**

Maintain refrigerated at 2-8°C for up to 2 weeks. For long term storage store at -20°C in small aliquots to prevent freeze-thaw cycles.

**Precautions**

(DANRE) opn1mw2 Antibody (Center) is for research use only and not for use in diagnostic or therapeutic procedures.

**(DANRE) opn1mw2 Antibody (Center) - Protein Information**

**Name** opn1mw2

**Synonyms** rh22

**Function**

Visual pigments are the light-absorbing molecules that mediate vision. They consist of an apoprotein, opsin, covalently linked to cis-retinal.

#### Cellular Location

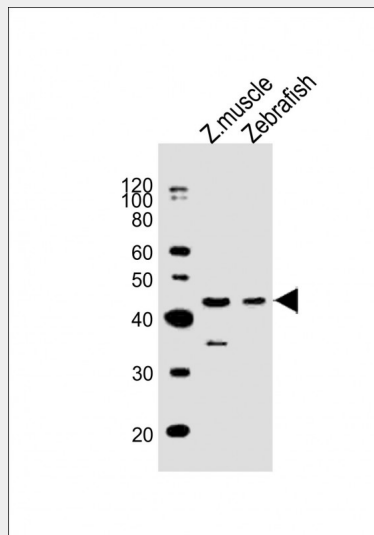
Membrane; Multi-pass membrane protein.

#### (DANRE) opn1mw2 Antibody (Center) - Protocols

Provided below are standard protocols that you may find useful for product applications.

- [Western Blot](#)
- [Blocking Peptides](#)
- [Dot Blot](#)
- [Immunohistochemistry](#)
- [Immunofluorescence](#)
- [Immunoprecipitation](#)
- [Flow Cytometry](#)
- [Cell Culture](#)

#### (DANRE) opn1mw2 Antibody (Center) - Images



All lanes : Anti-opn1mw2 Antibody (Center) at 1:2000 dilution Lane 1: Zebrafish muscle lysates Lane 2: Zebrafish lysates Lysates/proteins at 20  $\mu$ g per lane. Secondary Goat Anti-Rabbit IgG, (H+L), Peroxidase conjugated at 1/10000 dilution. Predicted band size : 39 kDa Blocking/Dilution buffer: 5% NFDM/TBST.

#### (DANRE) opn1mw2 Antibody (Center) - Background

Visual pigments are the light-absorbing molecules that mediate vision. They consist of an apoprotein, opsin, covalently linked to cis-retinal.

#### (DANRE) opn1mw2 Antibody (Center) - References

Chinen A., et al. Genetics 163:663-675(2003).