

**DANRE mycl1a Antibody (N-term)**  
**Purified Rabbit Polyclonal Antibody (Pab)**  
**Catalog # AW5508**

**Specification**

---

**DANRE mycl1a Antibody (N-term) - Product Information**

Application	WB,E
Primary Accession	<a href="#">Q9PSI9</a>
Reactivity	Zebrafish
Host	Rabbit
Clonality	Polyclonal
Calculated MW	Z=41 KDa
Isotype	Rabbit IgG
Antigen Source	HUMAN

**DANRE mycl1a Antibody (N-term) - Additional Information**

**Gene ID** 405873

**Antigen Region**  
80-113

**Other Names**

Protein L-Myc-1a, Protein L-Myc 1, zL-Myc, mycl1a {ECO:0000312|EMBL:AAH677231}, lmyc1, mycl1

**Dilution**

WB~~1:1000

**Target/Specificity**

This DANRE mycl1a antibody is generated from a rabbit immunized with a KLH conjugated synthetic peptide between 80-113 amino acids from the N-terminal region of DANRE mycl1a.

**Storage**

Maintain refrigerated at 2-8°C for up to 2 weeks. For long term storage store at -20°C in small aliquots to prevent freeze-thaw cycles.

**Precautions**

DANRE mycl1a Antibody (N-term) is for research use only and not for use in diagnostic or therapeutic procedures.

**DANRE mycl1a Antibody (N-term) - Protein Information**

**Name** mycl1a {ECO:0000312|EMBL:AAH67723.1}

**Synonyms** lmyc1, mycl1

**Cellular Location**

Nucleus {ECO:0000250|UniProtKB:P12524, ECO:0000255|PROSITE-ProRule:PRU00981}

#### Tissue Location

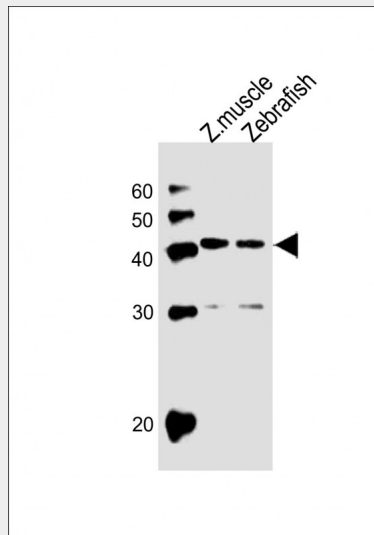
Uterus..

#### DANRE mycl1a Antibody (N-term) - Protocols

Provided below are standard protocols that you may find useful for product applications.

- [Western Blot](#)
- [Blocking Peptides](#)
- [Dot Blot](#)
- [Immunohistochemistry](#)
- [Immunofluorescence](#)
- [Immunoprecipitation](#)
- [Flow Cytometry](#)
- [Cell Culture](#)

#### DANRE mycl1a Antibody (N-term) - Images



All lanes : Anti-DANRE mycl1a Antibody (N-term) at 1:1000 dilution Lane 1: Zebrafish muscle lysates Lane 2: Zebrafish lysates Lysates/proteins at 20 µg per lane. Secondary Goat Anti-Rabbit IgG, (H+L), Peroxidase conjugated at 1/10000 dilution. Predicted band size : 41 kDa Blocking/Dilution buffer: 5% NFDM/TBST.

#### DANRE mycl1a Antibody (N-term) - References

Schreiber-Agus N., et al. Mol. Cell. Biol. 13:2765-2775(1993).