

(DANRE) fabp10a Antibody (N-term)
Purified Rabbit Polyclonal Antibody (Pab)
Catalog # AW5507

Specification

(DANRE) fabp10a Antibody (N-term) - Product Information

Application	WB,E
Primary Accession	O918L5
Reactivity	Zebrafish
Host	Rabbit
Clonality	Polyclonal
Calculated MW	Z=14 KDa
Isotype	Rabbit IgG
Antigen Source	HUMAN

(DANRE) fabp10a Antibody (N-term) - Additional Information

Gene ID 171481

Antigen Region
30-63

Other Names

Fatty acid-binding protein 10-A, liver basic, Zf-FABP10, Zf-Lb-FABP, Fatty acid-binding protein, liver, Liver bile acid-binding protein, L-BABP, z-L-BABP, Liver-type fatty acid-binding protein, L-FABP, Liver-type FABP, fabp10a, fabp10

Dilution

WB~~1:1000

Target/Specificity

This DANRE fabp10a antibody is generated from a rabbit immunized with a KLH conjugated synthetic peptide between 30-63 amino acids from the N-terminal region of DANRE fabp10a.

Storage

Maintain refrigerated at 2-8°C for up to 2 weeks. For long term storage store at -20°C in small aliquots to prevent freeze-thaw cycles.

Precautions

(DANRE) fabp10a Antibody (N-term) is for research use only and not for use in diagnostic or therapeutic procedures.

(DANRE) fabp10a Antibody (N-term) - Protein Information

Name fabp10a

Synonyms fabp10

Function

Binds hydrophobic ligands, such as cholate, in the cytoplasm. May be involved in intracellular lipid transport (By similarity). Binds one cholate per subunit.

Cellular Location

Cytoplasm.

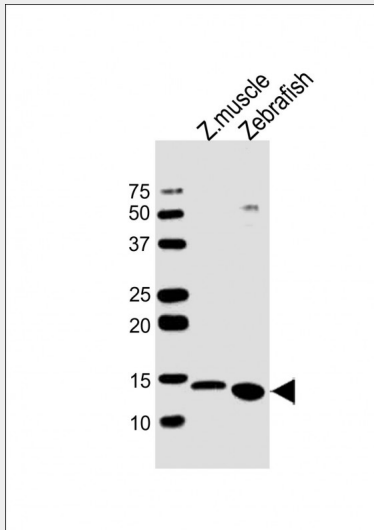
Tissue Location

Expressed in the developing embryonic liver from 48 hpf. Also expressed in the liver of 5-day-old larvae. In adults, primarily expressed in the liver, with weak expression in the testis and intestine.

(DANRE) fabp10a Antibody (N-term) - Protocols

Provided below are standard protocols that you may find useful for product applications.

- [Western Blot](#)
- [Blocking Peptides](#)
- [Dot Blot](#)
- [Immunohistochemistry](#)
- [Immunofluorescence](#)
- [Immunoprecipitation](#)
- [Flow Cytometry](#)
- [Cell Culture](#)

(DANRE) fabp10a Antibody (N-term) - Images

All lanes : Anti-fabp10a Antibody (N-term) at 1:1000 dilution Lane 1: Zebrafish muscle lysates Lane 2: Zebrafish lysates Lysates/proteins at 20 μ g per lane. Secondary Goat Anti-Rabbit IgG, (H+L), Peroxidase conjugated at 1/10000 dilution. Predicted band size : 14 kDa Blocking/Dilution buffer: 5% NFDN/TBST.

(DANRE) fabp10a Antibody (N-term) - Background

Binds hydrophobic ligands, such as cholate, in the cytoplasm. May be involved in intracellular lipid transport (By similarity). Binds one cholate per subunit.

(DANRE) fabp10a Antibody (N-term) - References

Denovan-Wright E.M., et al. *Biochim. Biophys. Acta* 1492:227-232(2000).
Her G.M., et al. *Dev. Dyn.* 227:347-356(2003).
Her G.M., et al. *FEBS Lett.* 538:125-133(2003).
Sharma M.K., et al. *FEBS J.* 273:3216-3229(2006).
Capaldi S., et al. *J. Biol. Chem.* 282:31008-31018(2007).