

(Mouse) Epcam Antibody (C-term)
Purified Rabbit Polyclonal Antibody (Pab)
Catalog # AW5495

Specification

(Mouse) Epcam Antibody (C-term) - Product Information

Application	WB, FC,E
Primary Accession	O99JW5
Reactivity	Human, Mouse
Host	Rabbit
Clonality	Polyclonal
Calculated MW	M=35;H=35;R=35 KDa
Isotype	Rabbit IgG
Antigen Source	HUMAN

(Mouse) Epcam Antibody (C-term) - Additional Information

Gene ID 17075

Antigen Region
302-335

Other Names

Epithelial cell adhesion molecule, Ep-CAM, Epithelial glycoprotein 314, EGP314, mEGP314, Protein 289A, Tumor-associated calcium signal transducer 1, CD326, Epcam, Tacstd1

Dilution

WB~~1:1000
FC~~1:25

Target/Specificity

This Mouse Epcam antibody is generated from a rabbit immunized with a KLH conjugated synthetic peptide between 302-335 amino acids from the C-terminal region of mouse Epcam.

Storage

Maintain refrigerated at 2-8°C for up to 2 weeks. For long term storage store at -20°C in small aliquots to prevent freeze-thaw cycles.

Precautions

(Mouse) Epcam Antibody (C-term) is for research use only and not for use in diagnostic or therapeutic procedures.

(Mouse) Epcam Antibody (C-term) - Protein Information

Name Epcam

Synonyms Tacstd1

Function

May act as a physical homophilic interaction molecule between intestinal epithelial cells (IECs) and intraepithelial lymphocytes (IELs) at the mucosal epithelium for providing immunological barrier as a first line of defense against mucosal infection. Plays a role in embryonic stem cells proliferation and differentiation. Up-regulates the expression of FABP5, MYC and cyclins A and E (By similarity).

Cellular Location

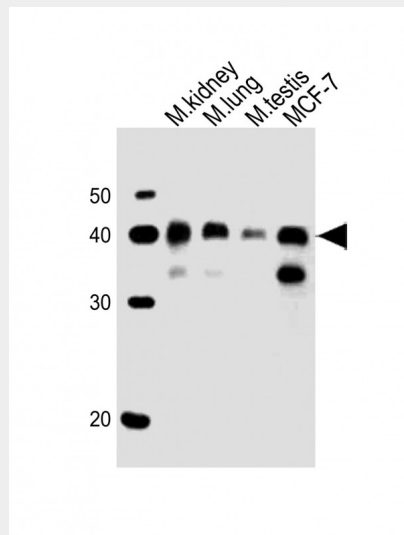
Lateral cell membrane {ECO:0000250|UniProtKB:P16422}; Single-pass type I membrane protein {ECO:0000250|UniProtKB:P16422}. Cell junction, tight junction {ECO:0000250|UniProtKB:P16422}. Note=Colocalizes with CLDN7 at the lateral cell membrane and tight junction {ECO:0000250|UniProtKB:P16422}

(Mouse) Epcam Antibody (C-term) - Protocols

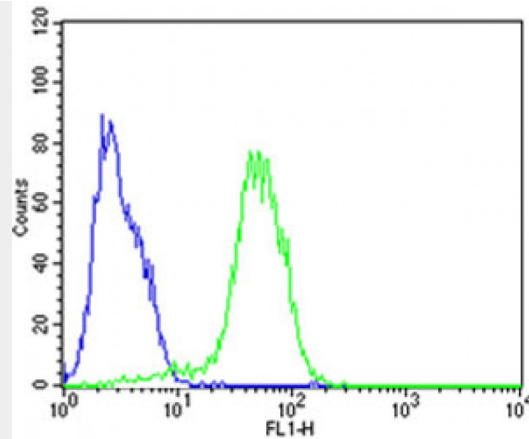
Provided below are standard protocols that you may find useful for product applications.

- [Western Blot](#)
- [Blocking Peptides](#)
- [Dot Blot](#)
- [Immunohistochemistry](#)
- [Immunofluorescence](#)
- [Immunoprecipitation](#)
- [Flow Cytometry](#)
- [Cell Culture](#)

(Mouse) Epcam Antibody (C-term) - Images



All lanes : Anti-Epcam Antibody (C-term) at 1:1000 dilution Lane 1: mouse kidney lysates Lane 2: mouse lung lysates Lane 3: mouse testis lysates Lane 4: MCF-7 whole cell lysates Lysates/proteins at 20 µg per lane. Secondary Goat Anti-Rabbit IgG, (H+L), Peroxidase conjugated at 1/10000 dilution Predicted band size : 35 kDa Blocking/Dilution buffer: 5% NFDN/TBST.



Flow cytometric analysis of HepG2 cells using (Mouse) Epcam Antibody (C-term)(green, Cat#AW5495) compared to an isotype control of rabbit IgG(blue). AW5493 was diluted at 1:25 dilution. An Alexa Fluor® 488 goat anti-rabbit IgG at 1:400 dilution was used as the secondary antibody.

(Mouse) Epcam Antibody (C-term) - Background

May act as a physical homophilic interaction molecule between intestinal epithelial cells (IECs) and intraepithelial lymphocytes (IELs) at the mucosal epithelium for providing immunological barrier as a first line of defense against mucosal infection. Plays a role in embryonic stem cells proliferation and differentiation. Up-regulates the expression of FABP5, MYC and cyclins A and E (By similarity).

(Mouse) Epcam Antibody (C-term) - References

Bergsagel P.L.,et al.J. Immunol. 148:590-596(1992).
Carninci P.,et al.Science 309:1559-1563(2005).