

ROS1 Antibody (C-term)
Purified Rabbit Polyclonal Antibody (Pab)
Catalog # AW5493**Specification**

ROS1 Antibody (C-term) - Product Information

Application	WB,E
Primary Accession	P08922
Reactivity	Human
Host	Rabbit
Clonality	Polyclonal
Calculated MW	H=264 KDa
Isotype	Rabbit IgG
Antigen Source	HUMAN

ROS1 Antibody (C-term) - Additional Information**Gene ID** 6098**Antigen Region**
1744-1777**Other Names**

Proto-oncogene tyrosine-protein kinase ROS, Proto-oncogene c-Ros, Proto-oncogene c-Ros-1, Receptor tyrosine kinase c-ros oncogene 1, c-Ros receptor tyrosine kinase, ROS1, MCF3, ROS

Dilution

WB~~1:1000

Target/Specificity

This ROS1 antibody is generated from a rabbit immunized with a KLH conjugated synthetic peptide between 1744-1777 amino acids from the C-terminal region of human ROS1.

Storage

Maintain refrigerated at 2-8°C for up to 2 weeks. For long term storage store at -20°C in small aliquots to prevent freeze-thaw cycles.

Precautions

ROS1 Antibody (C-term) is for research use only and not for use in diagnostic or therapeutic procedures.

ROS1 Antibody (C-term) - Protein Information**Name** ROS1**Synonyms** MCF3, ROS**Function**

Receptor tyrosine kinase (RTK) that plays a role in epithelial cell differentiation and regionalization of the proximal epididymal epithelium. NELL2 is an endogenous ligand for ROS1. Upon endogenous stimulation by NELL2, ROS1 activates the intracellular signaling pathway and triggers epididymal epithelial differentiation and subsequent sperm maturation (By similarity). May activate several downstream signaling pathways related to cell differentiation, proliferation, growth and survival including the PI3 kinase-mTOR signaling pathway. Mediates the phosphorylation of PTPN11, an activator of this pathway. May also phosphorylate and activate the transcription factor STAT3 to control anchorage-independent cell growth. Mediates the phosphorylation and the activation of VAV3, a guanine nucleotide exchange factor regulating cell morphology. May activate other downstream signaling proteins including AKT1, MAPK1, MAPK3, IRS1 and PLCG2.

Cellular Location

Cell membrane; Single-pass type I membrane protein

Tissue Location

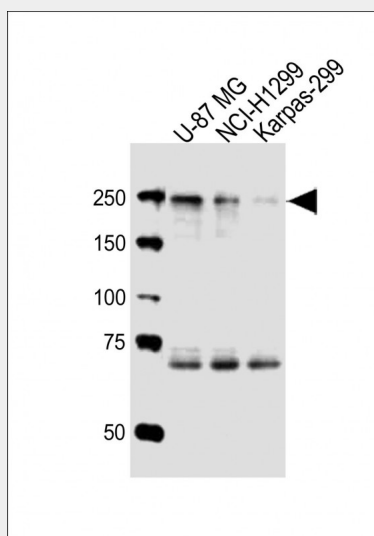
Expressed in brain. Expression is increased in primary gliomas.

ROS1 Antibody (C-term) - Protocols

Provided below are standard protocols that you may find useful for product applications.

- [Western Blot](#)
- [Blocking Peptides](#)
- [Dot Blot](#)
- [Immunohistochemistry](#)
- [Immunofluorescence](#)
- [Immunoprecipitation](#)
- [Flow Cytometry](#)
- [Cell Culture](#)

ROS1 Antibody (C-term) - Images



All lanes : Anti-ROS1 Antibody (C-term) at 1:1000 dilution Lane 1: U-87 MG whole cell lysates Lane 2: NCI-H1299 whole cell lysates Lane 3: Karpas-299 whole cell lysates Lysates/proteins at 20 µg per lane. Secondary Goat Anti-Rabbit IgG, (H+L), Peroxidase conjugated at 1/10000 dilution Predicted band size : 264 kDa Blocking/Dilution buffer: 5% NFDM/TBST.

ROS1 Antibody (C-term) - Background

Orphan receptor tyrosine kinase (RTK) that plays a role in epithelial cell differentiation and regionalization of the proximal epididymal epithelium. May activate several downstream signaling pathways related to cell differentiation, proliferation, growth and survival including the PI3 kinase-mTOR signaling pathway. Mediates the phosphorylation of PTPN11, an activator of this pathway. May also phosphorylate and activate the transcription factor STAT3 to control anchorage-independent cell growth. Mediates the phosphorylation and the activation of VAV3, a guanine nucleotide exchange factor regulating cell morphology. May activate other downstream signaling proteins including AKT1, MAPK1, MAPK3, IRS1 and PLCG2.

ROS1 Antibody (C-term) - References

Birchmeier C.,et al.Proc. Natl. Acad. Sci. U.S.A. 87:4799-4803(1990).
Mungall A.J.,et al.Nature 425:805-811(2003).
Matsushime H.,et al.Mol. Cell. Biol. 6:3000-3004(1986).
Birchmeier C.,et al.Mol. Cell. Biol. 6:3109-3116(1986).
Watkins D.,et al.Cancer Genet. Cytogenet. 72:130-136(1994).