

**APRT Antibody (N-term)**  
**Affinity Purified Rabbit Polyclonal Antibody (Pab)**  
**Catalog # AW5489**

**Specification**

---

**APRT Antibody (N-term) - Product Information**

Application	IF, WB, IHC-P, FC,E
Primary Accession	<a href="#">P07741</a>
Reactivity	Human
Host	Rabbit
Clonality	Polyclonal
Calculated MW	H=20,15;M=20;R=20 KDa
Isotype	Rabbit IgG
Antigen Source	HUMAN

**APRT Antibody (N-term) - Additional Information**

**Gene ID** 353

**Antigen Region**  
27-60

**Other Names**  
Adenine phosphoribosyltransferase, APRT, APRT

**Dilution**  
IF~~1:10~50  
WB~~1:1000  
IHC-P~~1:10~50  
FC~~1:10~50

**Target/Specificity**  
This APRT antibody is generated from rabbits immunized with a KLH conjugated synthetic peptide between 27-60 amino acids from the N-terminal region of human APRT.

**Storage**  
Maintain refrigerated at 2-8°C for up to 2 weeks. For long term storage store at -20°C in small aliquots to prevent freeze-thaw cycles.

**Precautions**  
APRT Antibody (N-term) is for research use only and not for use in diagnostic or therapeutic procedures.

**APRT Antibody (N-term) - Protein Information**

**Name** APRT ([HGNC:626](#))

**Function**

Catalyzes a salvage reaction resulting in the formation of AMP, that is energetically less costly than de novo synthesis.

#### Cellular Location

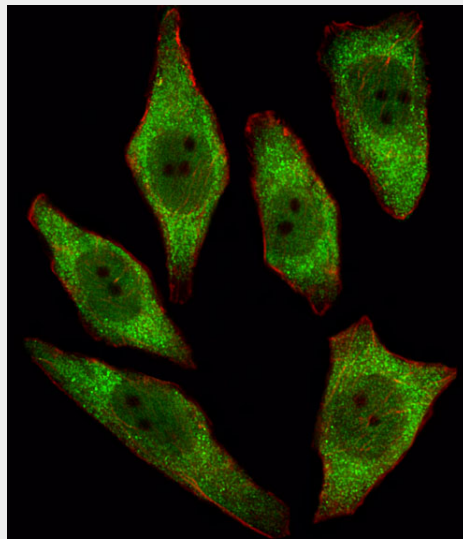
Cytoplasm.

#### APRT Antibody (N-term) - Protocols

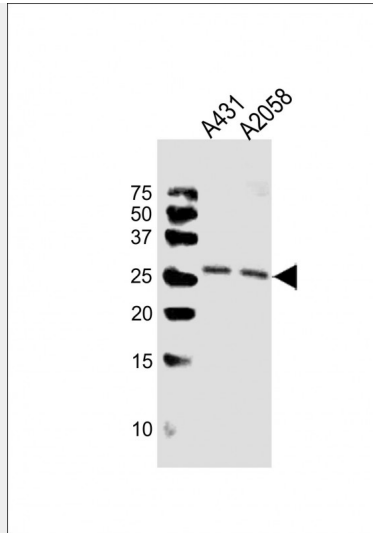
Provided below are standard protocols that you may find useful for product applications.

- [Western Blot](#)
- [Blocking Peptides](#)
- [Dot Blot](#)
- [Immunohistochemistry](#)
- [Immunofluorescence](#)
- [Immunoprecipitation](#)
- [Flow Cytometry](#)
- [Cell Culture](#)

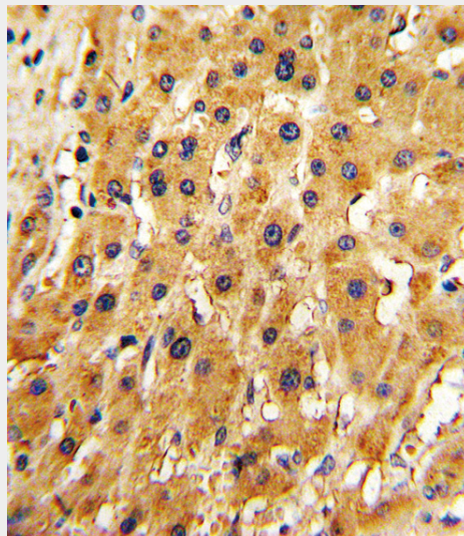
#### APRT Antibody (N-term) - Images



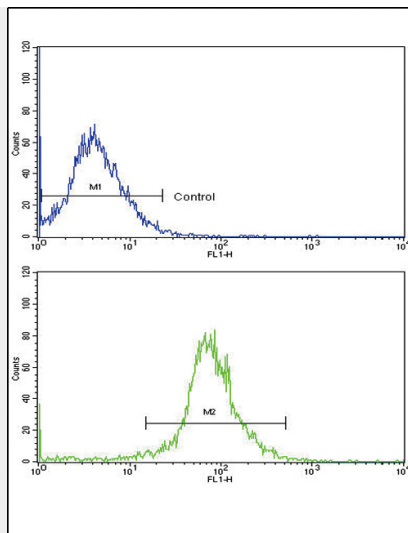
Fluorescent image of A549 cell stained with APRT Antibody (N-term)(Cat#AW5489/SA091009AF).A549 cells were fixed with 4% PFA (20 min), permeabilized with Triton X-100 (0.1%, 10 min), then incubated with APRT primary antibody (1:25, 1 h at 37°C). For secondary antibody, Alexa Fluor® 488 conjugated donkey anti-rabbit antibody (green) was used (1:400, 50 min at 37°C).Cytoplasmic actin was counterstained with Alexa Fluor® 555 (red) conjugated Phalloidin (7units/ml, 1 h at 37°C).APRT immunoreactivity is localized to Cytoplasm and Nucleus significantly.



All lanes : Anti-APRT Antibody (N-term) at 1:1000 dilution Lane 1: A431 whole cell lysates Lane 2: A2058 whole cell lysates Lysates/proteins at 20  $\mu$ g per lane. Secondary Goat Anti-Rabbit IgG, (H+L), Peroxidase conjugated at 1/10000 dilution Predicted band size : 20 kDa Blocking/Dilution buffer: 5% NFDN/TBST.



Formalin-fixed and paraffin-embedded human hepatocarcinoma with APRT Antibody (N-term), which was peroxidase-conjugated to the secondary antibody, followed by DAB staining. This data demonstrates the use of this antibody for immunohistochemistry; clinical relevance has not been evaluated.



Flow cytometric analysis of HepG2 cells using APRT Antibody (N-term)(bottom histogram) compared to a negative control cell (top histogram). FITC-conjugated goat-anti-rabbit secondary antibodies were used for the analysis.

#### **APRT Antibody (N-term) - Background**

A conserved feature of APRT is the distribution of CpG dinucleotides. This enzyme catalyzes the formation of AMP and inorganic pyrophosphate from adenine and 5-phosphoribosyl-1-pyrophosphate (PRPP). It also produces adenine as a by-product of the polyamine biosynthesis pathway. A homozygous deficiency in this enzyme causes 2,8-dihydroxyadenine urolithiasis.

#### **APRT Antibody (N-term) - References**

Silva,C.H., et. al.,J. Biomol. Struct. Dyn. 25 (6), 589-597 (2008)  
Di Pietro,V., et. al., Clin. Biochem. 40 (1-2), 73-80 (2007)