

**Mouse Pax6 Antibody (C-term)**  
**Purified Rabbit Polyclonal Antibody (Pab)**  
**Catalog # AW5488**

**Specification**

---

**Mouse Pax6 Antibody (C-term) - Product Information**

Application	WB,E
Primary Accession	<a href="#">P63015</a>
Reactivity	Mouse, Rat
Host	Rabbit
Clonality	Polyclonal
Calculated MW	M=47;H=47;R=47 KDa
Isotype	Rabbit IgG
Antigen Source	HUMAN

**Mouse Pax6 Antibody (C-term) - Additional Information**

**Gene ID** 18508

**Antigen Region**  
404-436

**Other Names**  
Paired box protein Pax-6, Oculorhombin, Pax6, Pax-6, Sey

**Dilution**  
WB~~1:1000

**Target/Specificity**  
This Mouse Pax6 antibody is generated from a rabbit immunized with a KLH conjugated synthetic peptide between 404-436 amino acids from the C-terminal region of Mouse Pax6.

**Storage**  
Maintain refrigerated at 2-8°C for up to 2 weeks. For long term storage store at -20°C in small aliquots to prevent freeze-thaw cycles.

**Precautions**  
Mouse Pax6 Antibody (C-term) is for research use only and not for use in diagnostic or therapeutic procedures.

**Mouse Pax6 Antibody (C-term) - Protein Information**

**Name** Pax6

**Synonyms** Pax-6, Sey

**Function**  
Transcription factor with important functions in the development of the eye, nose, central nervous

system and pancreas. Required for the differentiation of pancreatic islet alpha cells (PubMed:<a href="http://www.uniprot.org/citations/9163426" target="\_blank">9163426</a>). Competes with PAX4 in binding to a common element in the glucagon, insulin and somatostatin promoters. Regulates specification of the ventral neuron subtypes by establishing the correct progenitor domains (By similarity). Acts as a transcriptional repressor of NFATC1-mediated gene expression (PubMed:<a href="http://www.uniprot.org/citations/23990468" target="\_blank">23990468</a>).

#### Cellular Location

Nucleus. [Isoform 3]: Nucleus. Cytoplasm

#### Tissue Location

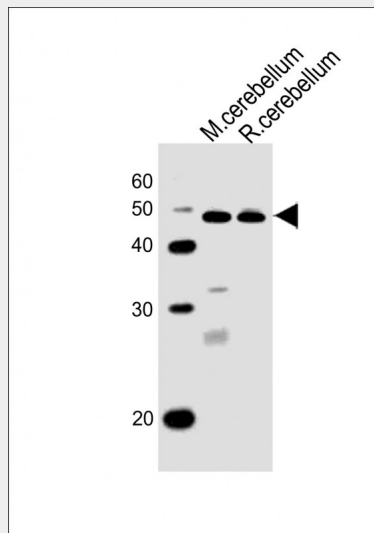
Expressed in osteoclasts. [Isoform 3]: Dominant isoform expressed in the eye, including in the retina and cornea (PubMed:21084637). Weakly expressed in the lens epithelium (PubMed:21084637)

### Mouse Pax6 Antibody (C-term) - Protocols

Provided below are standard protocols that you may find useful for product applications.

- [Western Blot](#)
- [Blocking Peptides](#)
- [Dot Blot](#)
- [Immunohistochemistry](#)
- [Immunofluorescence](#)
- [Immunoprecipitation](#)
- [Flow Cytometry](#)
- [Cell Culture](#)

### Mouse Pax6 Antibody (C-term) - Images



All lanes : Anti-Pax6 Antibody (C-term) at 1:1000 dilution Lane 1: mouse cerebellum lysates Lane 2: rat cerebellum lysates Lysates/proteins at 20 µg per lane. Secondary Goat Anti-Rabbit IgG, (H+L), Peroxidase conjugated at 1/10000 dilution Predicted band size : 47 kDa Blocking/Dilution buffer: 5% NFDN/TBST.

### Mouse Pax6 Antibody (C-term) - Background

Transcription factor with important functions in the development of the eye, nose, central nervous system and pancreas. Required for the differentiation of pancreatic islet alpha cells. Competes with PAX4 in binding to a common element in the glucagon, insulin and somatostatin promoters. Regulates specification of the ventral neuron subtypes by establishing the correct progenitor domains (By similarity).

#### **Mouse Pax6 Antibody (C-term) - References**

Walther C.,et al.Development 113:1435-1449(1991).  
Favor J.,et al.Genetics 159:1689-1700(2001).  
Carninci P.,et al.Science 309:1559-1563(2005).  
Walther C.,et al.Genomics 11:424-434(1991).  
Ton C.C.T.,et al.Genomics 13:251-256(1992).